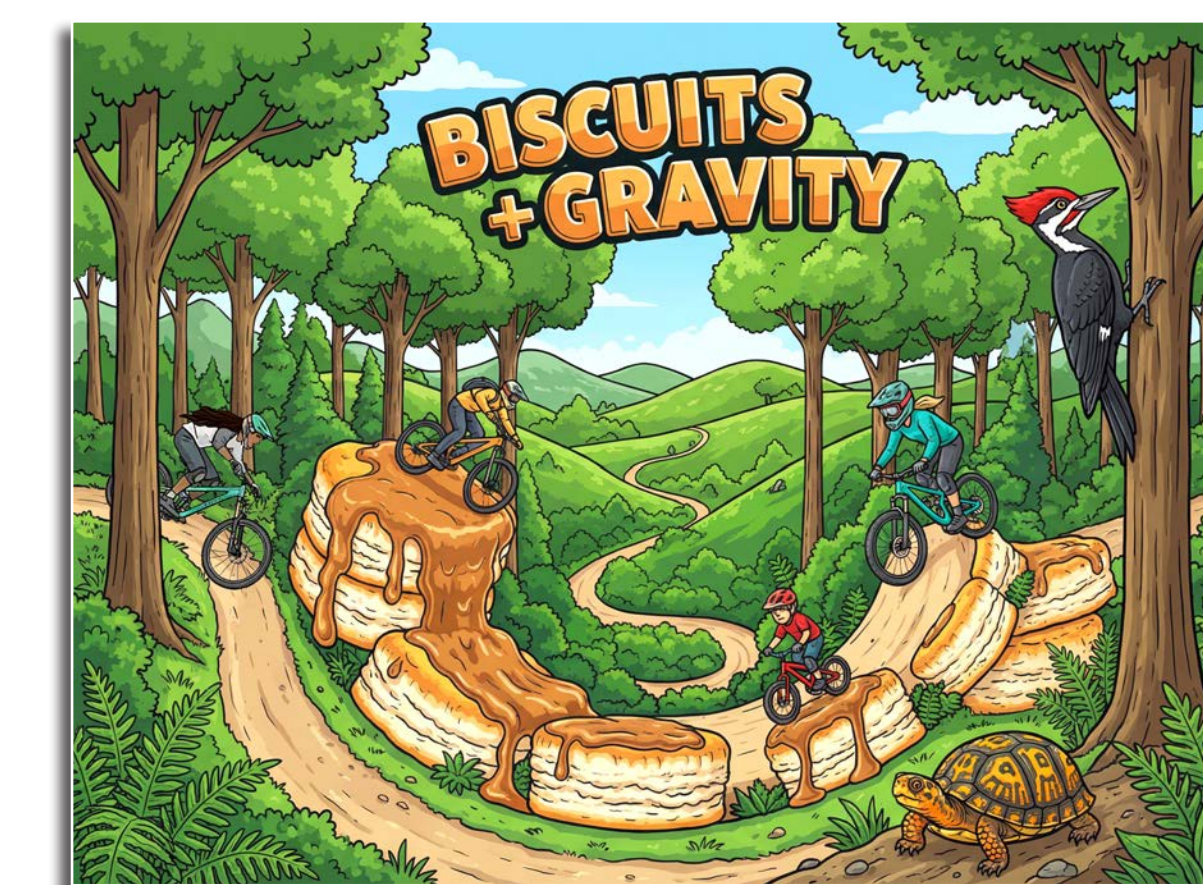
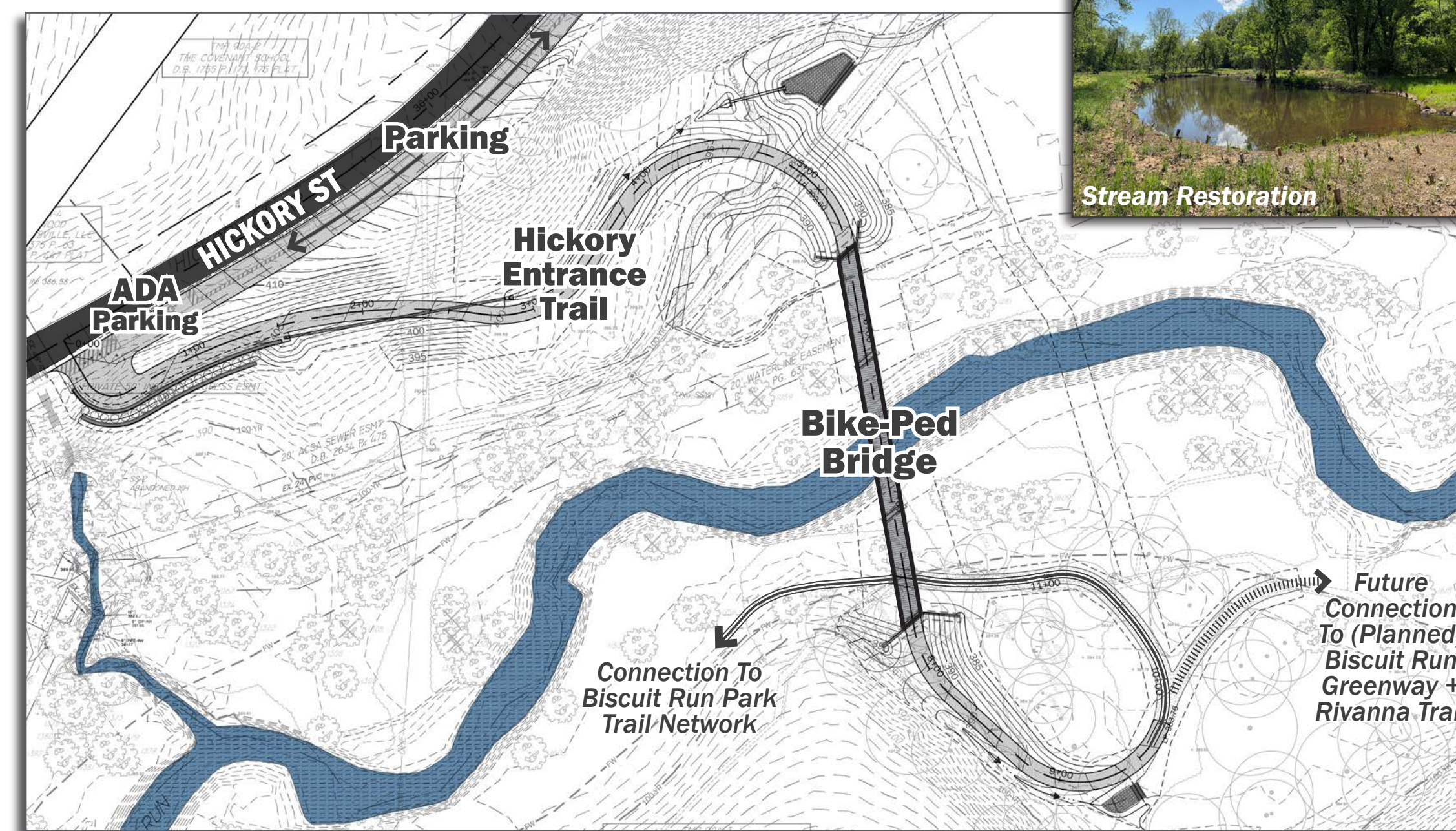
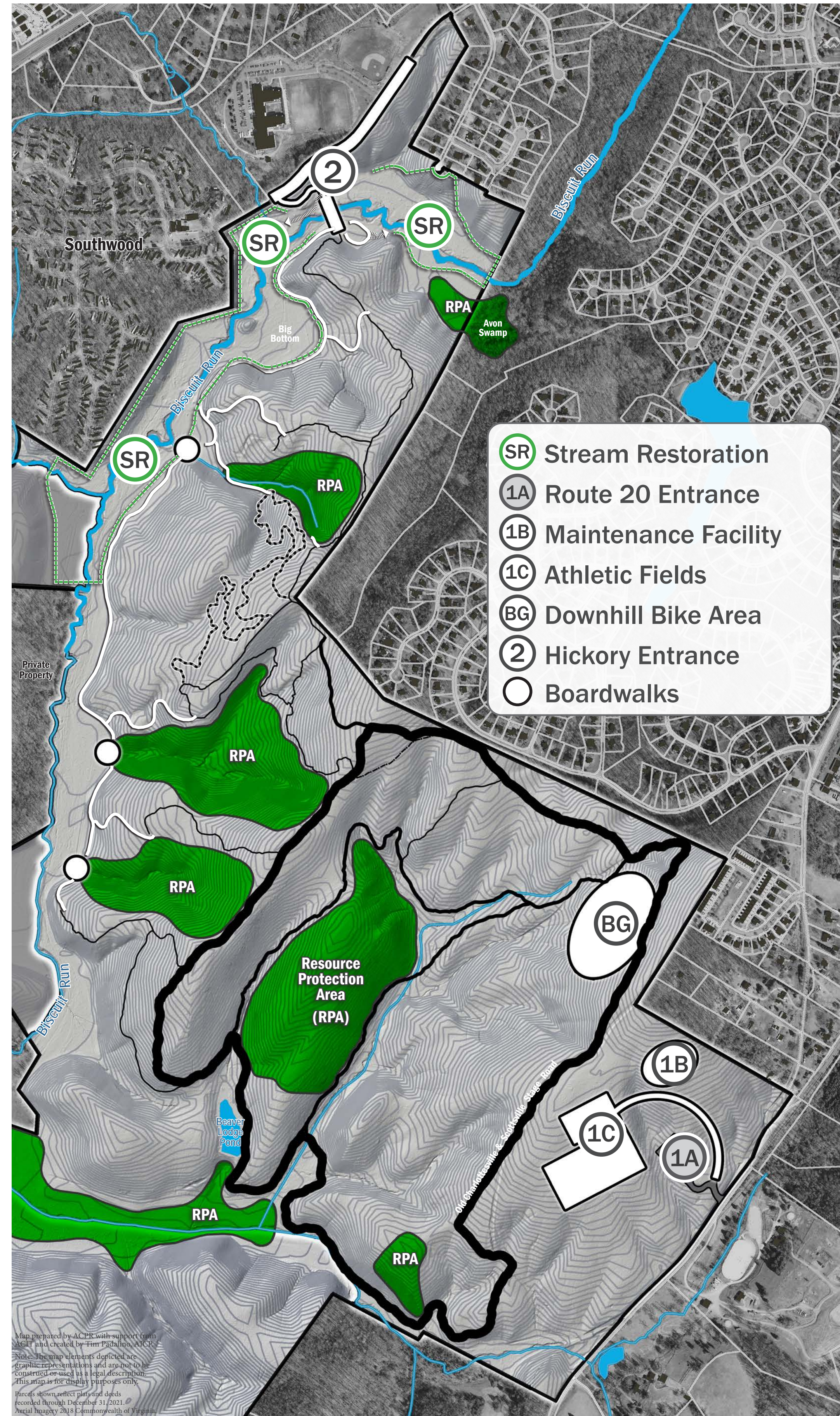




Biscuit Run Park



What's Next: Active Projects in 2026 & Beyond



Hickory Entrance + Bridge

Construction work is underway to create a second park entrance in the northern portion of the park at Hickory Street. On-street parking and a paved pathway will provide ADA access to a 220'-long bridge for pedestrians and bikers, and connect with an expanded trail network in BRP. This project will provide more convenient access for residents near the growing Old Lynchburg Road corridor.

Environmental Stewardship

The recently-completed stream restoration has transformed one mile of the Biscuit Run stream valley, and will:

- improve stream health and water quality;
- enhance habitat for aquatic, riparian, and forest species;
- and help increase resilience and mitigate flash flooding.

Other ongoing resource management activities include:

- the removal of non-native invasive plants
- the establishment of native plants communities
- Eastern Hemlock grove (woolly adelgid treatment)

Athletic Fields

Construction is underway near Route 20 to add recreation amenities and infrastructure: two irrigated grass athletic fields, an extended access road, new parking and restrooms, and an ADA-accessible terrace with vistas of Carters Mountain and the Southern Albemarle Rural Historic District.

New Trails + Boardwalks

Multiple re-routes, closures, and new trail sections were completed in 2025. Several miles of new multi-use trails are being built in 2026 for sustainable access to new areas. Three boardwalks will be built across wetlands and other sensitive areas in accordance with the BRP Master Plan.

Downhill Bike Area

Now open for public use, the "Biscuits + Gravity" bike area was created in partnership with the C'ville Area Mountain Bike Club (CAMBC). Designed to be inclusive, exciting, and support progressive skill-building, B+G includes jump lines for different skill levels, sidewinders, drops, skinnies, and other features.