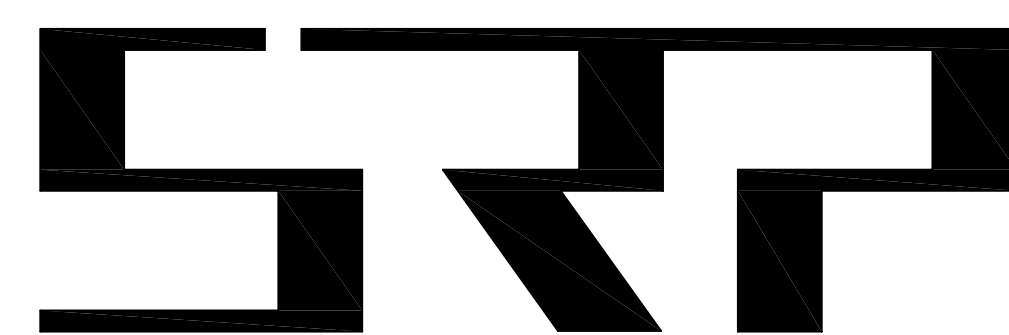


# ALBEMARLE HIGH SCHOOL

## ELECTRICAL PANEL REPLACEMENT

### ALBEMARLE COUNTY PUBLIC SCHOOLS

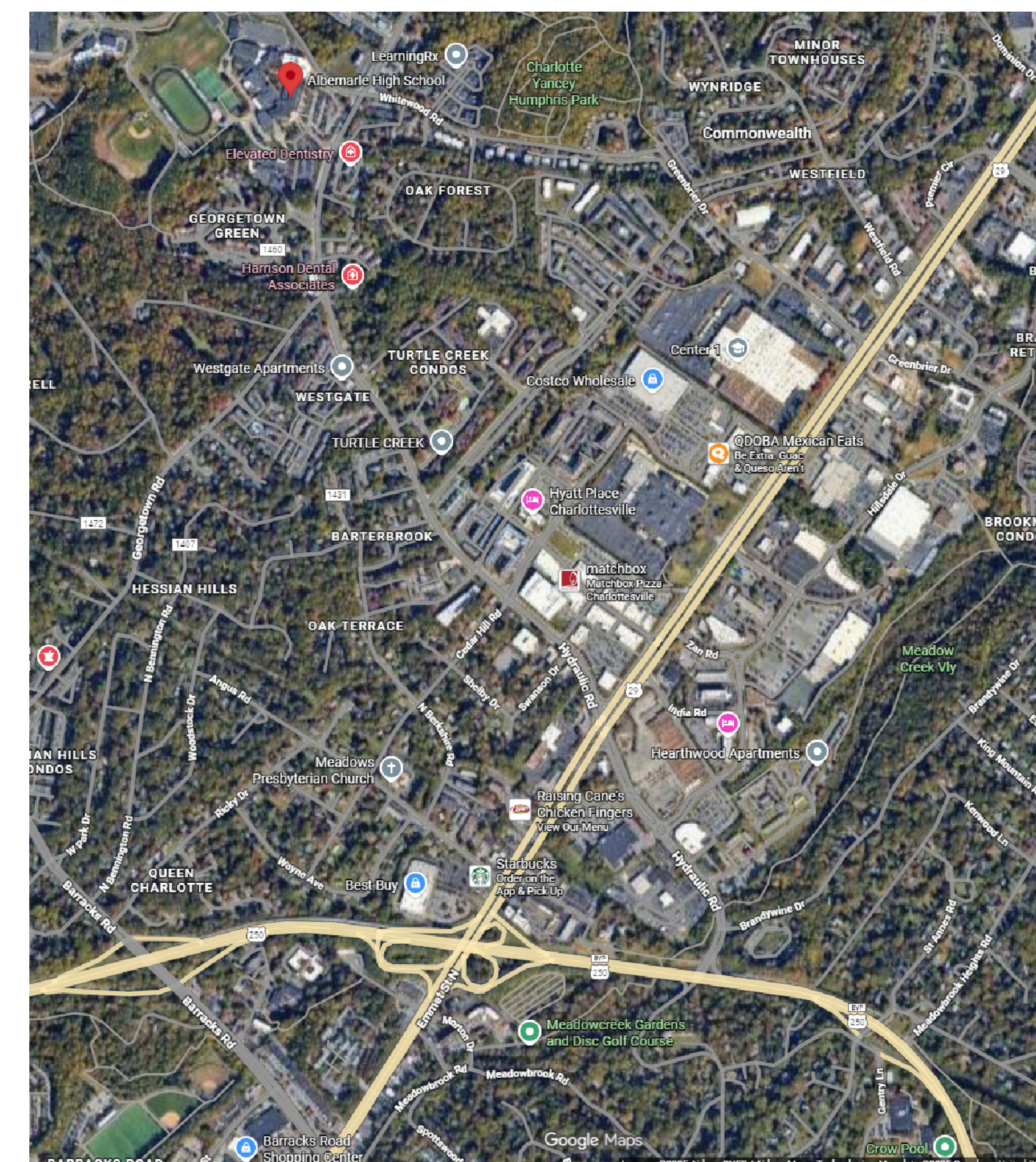
IFB #2026-IFB-0103192



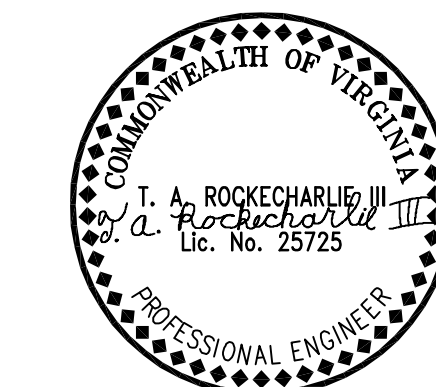
SIMMONS, ROCKECHARLIE & PRINCE INC.  
 Consulting Mechanical and Electrical Engineers  
 10150 Staples Mill Road  
 Suite A  
 Glen Allen, Virginia 23060  
 Phone: 804-262-7323

**LIST OF DRAWINGS**

CS	COVER SHEET
E1.1	LEGEND, NOTES AND POWER RISERS
E1.2	PANEL SCHEDULES
E1.3	FLOOR PLANS - ELECTRICAL



VICINITY MAP



**SIMMONS,  
 ROCKECHARLIE  
 AND PRINCE, INC.**

CONSULTING MECHANICAL  
 AND ELECTRICAL ENGINEERS

10150 STAPLES MILL ROAD  
 SUITE A  
 GLEN ALLEN, VA 23060  
 PHONE: (804) 262-7323  
 WebSite: www.srpeng.com

COPYRIGHT © SIMMONS, ROCKECHARLIE AND PRINCE, INC. - ALL RIGHTS RESERVED.  
 THIS DRAWING MAY NOT BE USED IN ANY MANNER NOR REPRODUCED OR SCANNED IN ANY FORM WITHOUT PRIOR WRITTEN CONSENT OF SIMMONS, ROCKECHARLIE AND PRINCE, INC.

**JOB NAME:**  
 ALBEMARLE  
 HIGH SCHOOL  
  
 ELECTRICAL PANEL  
 REPLACEMENT

2775 HYDRAULIC RD.,  
 CHARLOTTESVILLE,  
 VIRGINIA 22901

**DRAWING TITLE:**  
 COVER SHEET

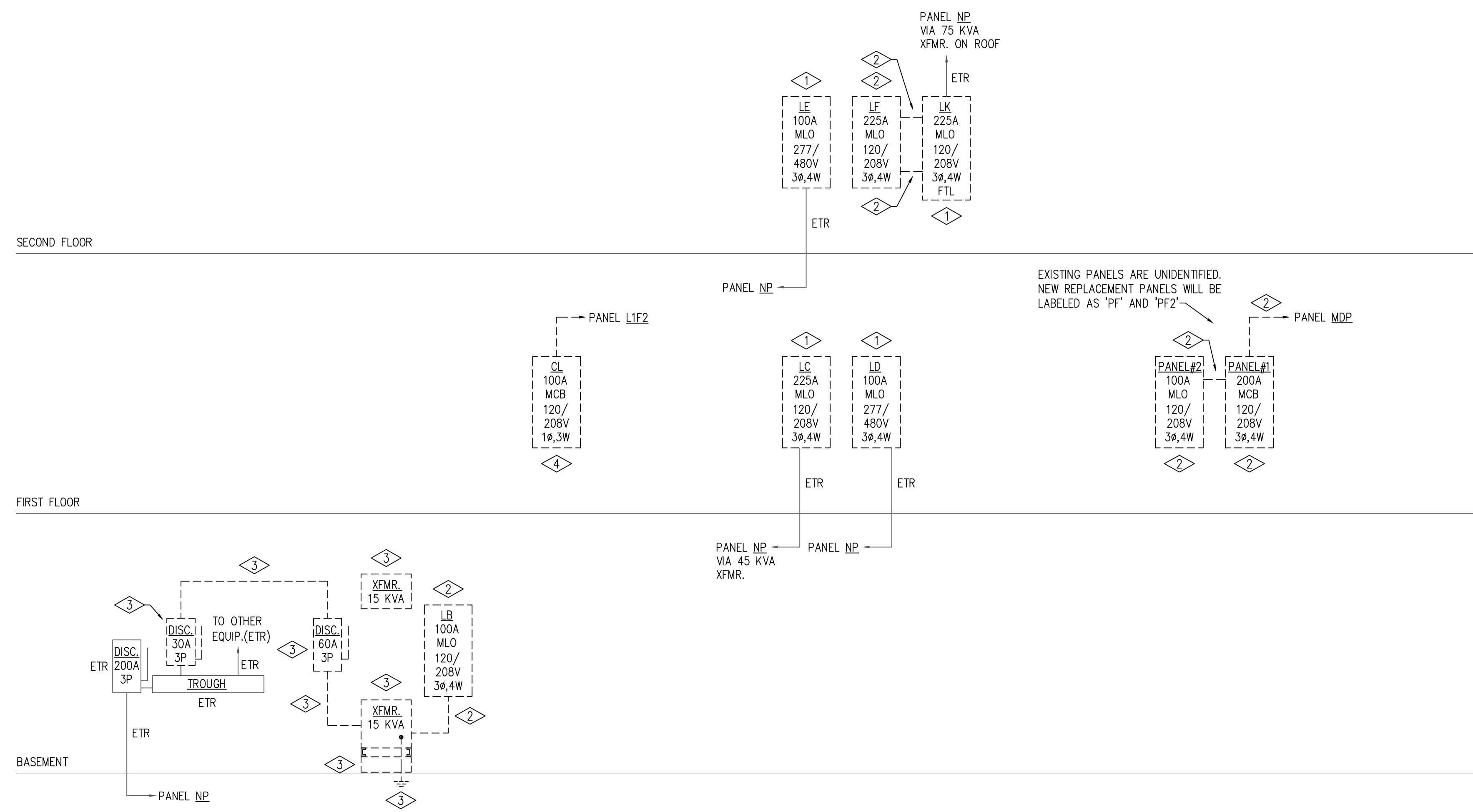
**REVISIONS:**

NO.	DATE	DESCRIPTION
▲		
▲		
▲		
▲		
▲		
▲		
▲		
▲		
▲		
▲		

**DRAWN BY:** RRCM    **CHECKED BY:** RRCM

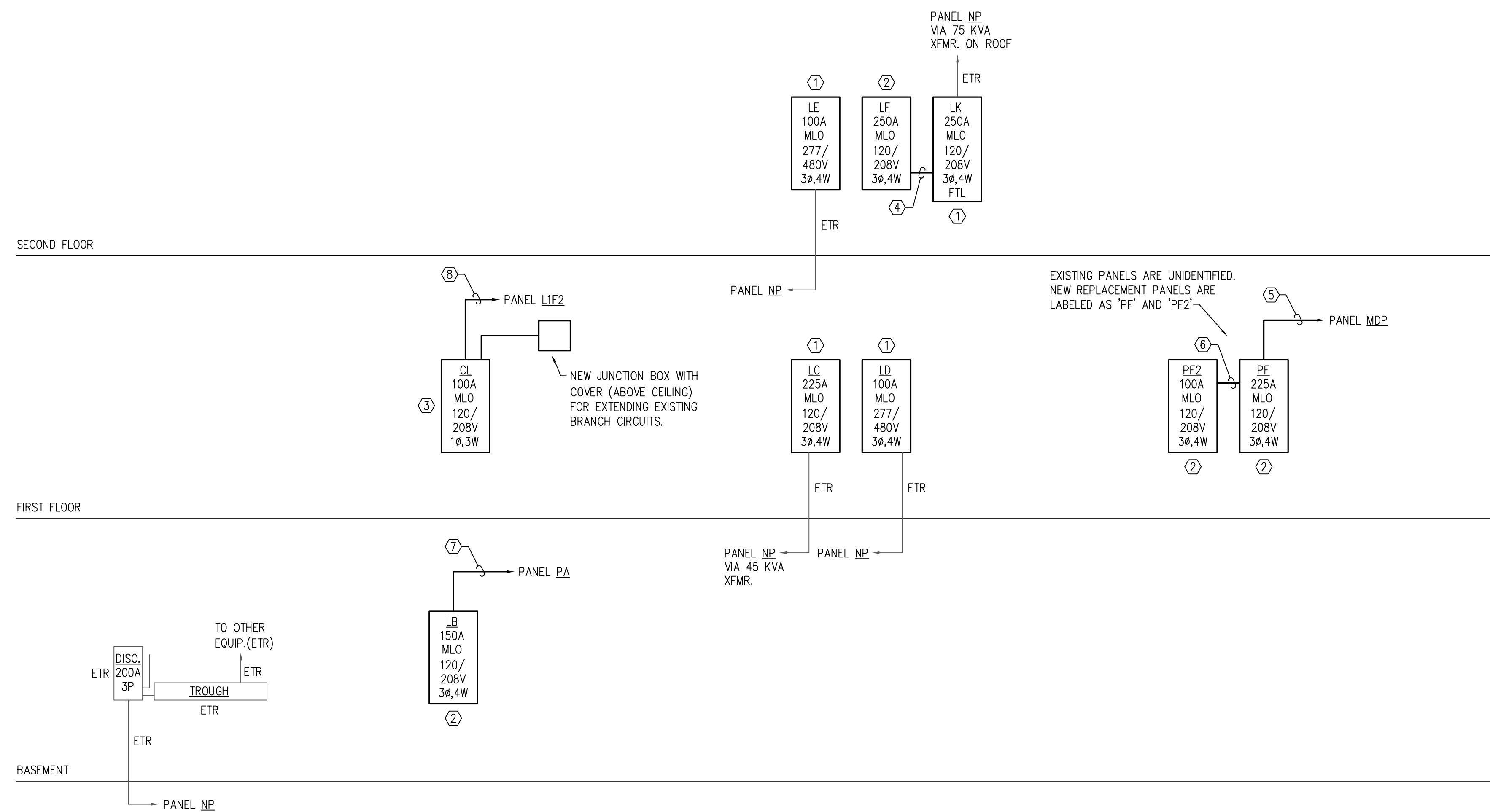
**COMM. NO.:** 25065    **DATE:** 1-16-26

**SHEET NO.:**  
 CS  
 OF: 1



**PARTIAL POWER RISER - DEMOLITION**

NO SCALE  
NOTE: SEE FLOOR PLANS FOR LOCATIONS OF PANELS 'L1F2', 'NP', 'PA' AND 'MDP'.



**PARTIAL POWER RISER - NEW WORK**

NO SCALE  
NOTE: SEE FLOOR PLANS FOR LOCATIONS OF PANELS 'L1F2', 'NP', 'PA' AND 'MDP'.

**GENERAL DEMOLITION NOTES**

- THE CONTRACTOR SHALL VISIT THE SITE AND INSPECT THE ELECTRICAL SYSTEMS TO DETERMINE THE EXTENT OF THE DEMOLITION WORK REQUIRED AND INCLUDE PRICE FOR SAME IN BID.  
ELECTRICAL DEMOLITION WORK SHALL BE COORDINATED WITH OWNER. CONTRACTOR SHALL DE-ENERGIZE ALL CIRCUITS ASSOCIATED WITH EQUIPMENT BEING REMOVED BEFORE STARTING DEMOLITION. LOCK OUT AND TAG OUT ALL DE-ENERGIZED CIRCUITS TO PREVENT FROM ACCIDENTAL RE-ENERGIZATION.  
ALL FIXTURES, DEVICES AND EQUIPMENT SHOWN DASHED AND ASSOCIATED WIRING SHALL BE REMOVED.
  - REMOVE ALL WIRE BACK TO SOURCE, UNLESS OTHERWISE NOTED. EXISTING CONDUIT MAY BE REUSED, IF CORRECT SIZE PER NEC. REMOVE ALL UNUSED CONDUIT BACK TO SOURCE.
  - CUT CONDUIT FLUSH WITH FLOOR AND SEAL FLUSH WITH FLOOR WHERE CONDUIT IS STUBBED UP ABOVE FLOOR. ABANDON THE REST OF THE CONDUIT RUN IN PLACE. REMOVE ALL WIRE BACK TO SOURCE.
  - PROVIDE BLANK COVER PLATES TO MATCH EXISTING FOR UNUSED BOXES.
- ALL ELECTRICAL ITEMS DESIGNATED "ETR"(EXISTING TO REMAIN) SHALL REMAIN DURING DEMOLITION AND SHALL BE PROTECTED FROM DAMAGE.
- PROVIDE NEW PANEL DIRECTORIES FOR ALL PANELS ASSOCIATED WITH THIS WORK. SHOW ROOM NUMBERS AS ASSIGNED BY OWNER TO ROOMS AND NOT ARCHITECTURAL DRAWING ROOM NUMBERS. TRACE OUT ALL CIRCUITS ASSOCIATED WITH THE PANELS AND MARK THE NEW DIRECTORIES CORRECTLY AND WITH THE NEW ROOM NUMBERS.
- PAINT EXISTING SURFACES THAT BECOME EXPOSED AS THE RESULT OF DEMOLITION WHERE NEW WORK NO LONGER CONCEALS.
- VERIFY PHASE ROTATION BEFORE PANEL DEMOLITION.

**DEMOLITION NOTES**

- REMOVE EXISTING PANEL, INCLUDING THE ENCLOSURE. RETAIN ALL EXISTING FEEDER AND BRANCH CIRCUIT WIRE AND CONDUIT FOR RECONNECTION TO NEW REPLACEMENT PANEL. SEE PANEL SCHEDULE FOR MORE DETAILS.
- REMOVE EXISTING PANEL, INCLUDING THE ENCLOSURE. REMOVE INCOMING FEEDER WIRE AND CONDUIT BACK TO SOURCE. RETAIN ALL BRANCH CIRCUIT WIRE AND CONDUIT FOR RECONNECTION TO NEW REPLACEMENT PANEL. SEE PANEL SCHEDULE FOR MORE DETAILS.
- REMOVE (1) EXISTING ABANDONED TRANSFORMER (MOUNTED HIGH ON WALL) ASSOCIATED WITH PANEL 'LB'. REMOVE WORKING TRANSFORMER ASSOCIATED WITH PANEL 'LB' AND HAND OVER TO OWNER. REMOVE (2) DISCONNECT SWITCHES ASSOCIATED WITH PANEL 'LB'. REMOVE ALL WIRE AND CONDUIT ASSOCIATED WITH THE (2) TRANSFORMERS AND THE (2) DISCONNECT SWITCHES. REMOVE CONCRETE PAD ASSOCIATED WITH THE TRANSFORMER. LEVEL WITH FLOOR. PATCH AND FINISH TO MATCH ADJACENT FLOOR.
- REMOVE EXISTING PANEL, INCLUDING THE ENCLOSURE. REMOVE INCOMING FEEDER WIRE AND CONDUIT BACK TO SOURCE. REMOVE ALL BRANCH CIRCUIT WIRE AND CONDUIT TO A NEW JUNCTION BOX ABOVE CEILING FOR EXTENSION TO NEW REPLACEMENT PANEL AT A NEW LOCATION. REPLACE EXISTING ROMEX CABLE (-30') WITH #12 WIRE IN 3/4" C.

**NEW WORK NOTES**

- PANELBOARD REPLACEMENT NOTE (APPLIES TO ALL PANELBOARDS):  
EXISTING PANELBOARD ENCLOSURES SHALL NOT BE REUSED. BREAKER LAYOUT IN REPLACEMENT PANEL SHALL MATCH EXISTING TO AVOID ANY SPLICES. CUT BACK EXISTING WIRE AND CONDUIT AS NEEDED TO ALLOW FOR RECONNECTION. CONFIRM PHASE ROTATION BEFORE RECONNECTION. ALSO PROVIDE NEW PULL BOXES AS NEEDED TO ALLOW FOR RECONNECTION OF EXISTING WIRE AND CONDUIT. CONTRACTOR SHALL SAW CUT EXISTING WALLS AS NEEDED TO ALLOW FOR THE INSTALLATION OF NEW ENCLOSURES. WHERE NEW PANELBOARD ENCLOSURES ARE SMALLER THAN EXISTING ENCLOSURES, CONTRACTOR SHALL INFILL WITH BLOCK AND MORTAR OR WITH ADJACENT MATCHING MATERIALS. PATCH AND PAINT AROUND REPLACEMENT PANELS TO MATCH ADJACENT SURFACES. REPLACE WALL TILES AROUND RECESSED PANELBOARDS TO MATCH EXISTING.
- NEW REPLACEMENT PANEL IN PLACE OF EXISTING. RECONNECT ALL EXISTING RETAINED FEEDER AND BRANCH CIRCUIT WIRE AND CONDUIT. SEE PANEL SCHEDULE FOR MORE DETAILS.
  - NEW REPLACEMENT PANEL IN PLACE OF EXISTING. PROVIDE NEW FEEDER WIRE AND CONDUIT AS NOTED. RECONNECT ALL EXISTING RETAINED BRANCH CIRCUIT WIRE AND CONDUIT. SEE PANEL SCHEDULE FOR MORE DETAILS.
  - NEW REPLACEMENT PANEL AT NEW LOCATION. PROVIDE NEW FEEDER WIRE AND CONDUIT AS NOTED. EXTEND ALL EXISTING BRANCH CIRCUIT WIRE AND CONDUIT FROM EXISTING LOCATION. NEW WIRE SHALL MATCH EXISTING. SEE DEMOLITION NOTE #4. SEE PANEL SCHEDULE FOR MORE DETAILS.
  - 250A - (4) #250 MCM, (1) #4 G, 2-1/2" C. HOT AND NEUTRAL WIRES SHALL BE RUN IN THE SAME CONDUIT.
  - 225A - (4) #4/0, (1) #4 G, 2-1/2" C.
  - 100A - (4) #3, (1) #8 G, 1-1/4" C.
  - 150A - (4) #1/0, (1) #6 G, 2" C. APPROXIMATE LENGTH OF RUN IS 135'.
  - 100A, 1# - (3) #3, (1) #8 G, 1-1/4" C.

**LEGEND**

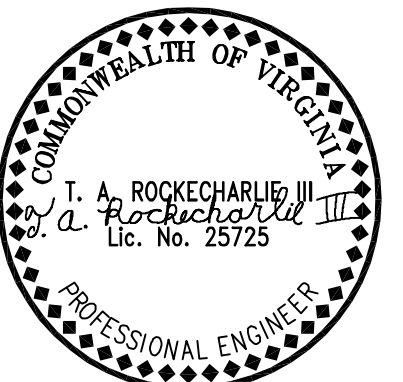
SYMBOL	DESCRIPTION
—	120/208V PANELBOARD. MAINTAIN ALL NEC CLEARANCES.
—	277/480V PANELBOARD. MAINTAIN ALL NEC CLEARANCES.
⊖	TAMPER RESISTANT RECEPTACLE, DUPLEX, 125V AC, 20A, 18" AFF.
→	HOME-RUN TO PANELBOARD. ALL 120V CIRCUITS SHALL HAVE INDIVIDUAL NEUTRALS. ALL CIRCUITS SHALL HAVE GROUND WIRES.
◇	DEMOLITION NOTE
①	NEW WORK NOTE
①	PANEL SCHEDULE NOTE
U.O.N.	UNLESS OTHERWISE NOTED
AFF	ABOVE FINISHED FLOOR
TYP.	TYPICAL
WP	WEATHER PROOF
ETR	EXISTING TO REMAIN
EX	EXISTING
CLASSROOM	ROOM NAME
MLO	MAIN LUGS ONLY
MCB	MAIN CIRCUIT BREAKER
A	AMPERES
V	VOLTS
∅	PHASE
W	WIRE
P	POLE
C	CONDUIT
G	GROUND
EC	EMPTY CONDUIT WITH NYLON PULL STRING AND CONDUIT BUSHING.

**PANELBOARD LABELING:**

FOR ALL NEW REPLACEMENT PANELBOARDS AND EXISTING REWORKED PANELBOARDS, PROVIDE LABELS INDICATING THE FOLLOWING:  
PANEL NAME  
SOURCE (FED FROM)  
AMPS  
VOLTAGE  
PHASE, NO. OF CONDUCTORS  
WIRE TYPE (AL/CU)  
WIRE AND CONDUIT SIZE  
AVAILABLE FAULT CURRENT AND DATE OF LABEL  
ARC FLASH LABELS PER NEC

ALL SHOWN LIGHT IS EXISTING TO REMAIN  
ALL SHOWN DASHED IS TO BE REMOVED  
ALL SHOWN DARK IS NEW WORK

CONTRACTOR SHALL PROTECT ALL DEVICES, FIXTURES, EQUIPMENT, FLOORS, OVERHANGS, HARDWARE, WALLS, DOORS, FINISHES, ETC. FROM DAMAGE. PROVIDE DIGITAL PICTURES OF EXISTING FINISHES BEFORE START OF WORK TO VERIFY DAMAGE CLAIMS. REPAIRS TO EXISTING WORK SHALL BE AT CONTRACTOR'S EXPENSE.



**SIMMONS, ROCKECHARLIE AND PRINCE, INC.**

CONSULTING MECHANICAL AND ELECTRICAL ENGINEERS

10150 STAPLES MILL ROAD  
SUITE A  
GLEN ALLEN, VA 23060  
PHONE: (804) 262-7323  
WebSite: www.srpeng.com

COPYRIGHT © SIMMONS, ROCKECHARLIE AND PRINCE, INC. - ALL RIGHTS RESERVED.  
THIS DRAWING WAS NOT BE USED IN ANY MANNER NOR REPRODUCED OR SCANNED IN ANY FORM WITHOUT PRIOR WRITTEN CONSENT OF SIMMONS, ROCKECHARLIE AND PRINCE, INC.

**JOB NAME:**  
**ALBEMARLE HIGH SCHOOL**  
**ELECTRICAL PANEL REPLACEMENT**

**2775 HYDRAULIC RD., CHARLOTTESVILLE, VIRGINIA 22901**

**DRAWING TITLE:**  
**LEGEND, NOTES AND POWER RISERS**

**REVISIONS:**

NO.	DATE	DESCRIPTION

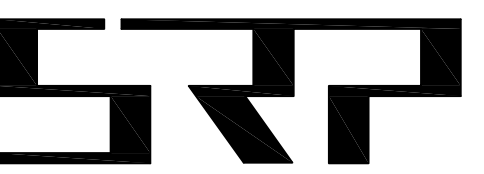
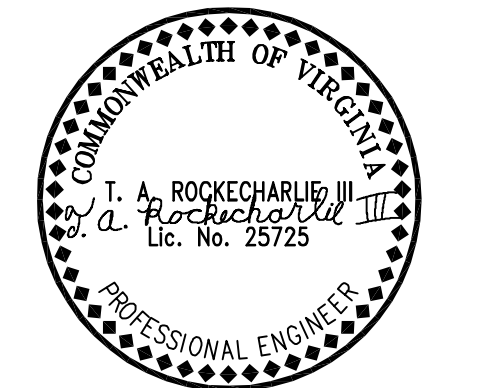
DRAWN BY: RRCM  
CHECKED BY: RRCM

COMM. NO. 25065  
DATE 1-16-26

SHEET NO.  
**E1.1**  
OF: 3

**PANELBOARDS GENERAL NOTES:**

- A. CONTRACTOR SHALL VERIFY AND PROVIDE LOCKABLE BREAKERS WITH RED IDENTIFICATION LABELS FOR ALL FIRE ALARM AND NAC PANEL CIRCUITS.
- B. PROVIDE NEW DIRECTORIES IN ALL NEW PANELBOARDS WITH ALL CIRCUITS TRACED. EXISTING DIRECTORIES SHALL NOT BE DUPLICATED WITHOUT TRACING THE CIRCUITS.
- C. FOR 2-POLE AND 3-POLE MOTOR LOADS, RECONNECT EXISTING WIRES SO THAT THE PHASE SEQUENCE WILL MATCH EXISTING.
- D. WHERE THERE IS NO EXISTING EQUIPMENT GROUND CONDUCTOR RUN WITH THE FEEDERS, CONTRACTOR SHALL BOND ASSOCIATED METALLIC CONDUIT TO GROUND BAR IN NEW REPLACEMENT PANEL, AS PER NEC. CONTRACTOR SHALL TEST AND VERIFY CONTINUITY OF EXISTING METALLIC CONDUIT.
- E. CLEAN OFF DUST FROM ALL EXISTING FEEDER AND BRANCH CIRCUIT WIRING BEFORE RECONNECTING TO NEW PANELBOARDS.
- F. ALL EXISTING WIRING SHALL BE NEATLY ARRANGED/BUNDLED IN NEW PANELBOARDS. REMOVE TEMPORARY WIRE TIES AND TAPES.
- G. TOP/BOTTOM FEED LOCATIONS NOTED IN PANELBOARD SCHEDULES ARE ONLY SUGGESTIONS. CONTRACTOR SHALL VERIFY ON SITE PRIOR TO ORDER, TO AVOID LIMIT SPLICES.
- H. VERIFY AND REMOVE ALL WIRES ASSOCIATED WITH EXISTING ABANDONED CIRCUITS.



**SIMMONS,  
ROCKECHARLIE  
AND PRINCE, INC.**

CONSULTING MECHANICAL  
AND ELECTRICAL ENGINEERS

10150 STAPLES MILL ROAD  
SUITE A  
GLEN ALLEN, VA 23060  
PHONE: (804) 262-7323  
WebSite: www.srpeng.com

COPYRIGHT © SIMMONS, ROCKECHARLIE AND PRINCE, INC. - ALL RIGHTS RESERVED.  
THIS DRAWING MAY NOT BE USED IN ANY MANNER NOR REPRODUCED OR SCANNED IN ANY FORM WITHOUT PRIOR WRITTEN CONSENT OF SIMMONS, ROCKECHARLIE AND PRINCE, INC.

**JOB NAME:**  
ALBEMARLE  
HIGH SCHOOL

**ELECTRICAL PANEL  
REPLACEMENT**

**2775 HYDRAULIC RD.,  
CHARLOTTESVILLE,  
VIRGINIA 22901**

**DRAWING TITLE:**  
PANEL SCHEDULES

**REVISIONS:**  
NO. DATE DESCRIPTION


**DRAWN BY:** RRCM **CHECKED BY:** RRCM

**COMM. NO.:** 25065 **DATE:** 1-16-26

**SHEET NO.:**

**E1.2**  
OF: 3

NEW REPLACEMENT PANELBOARD "LB" SCHEDULE																	
150A, 120/208V, 3ø, 4W, SN, GND BUS, SURFACE MOUNTED, NEMA-1 INDOOR ENCLOSURE 150A MLO, 10KAIC FULLY RATED (MAXIMUM AVAILABLE FC = 4,091 AMPS), TOP FEED																	
LOAD SERVED	LOAD			WIRE SIZE	BKR TRIP	POLE	PHASE			OCT NO	POLE	BKR TRIP	WIRE SIZE	LOAD			LOAD SERVED
	A	B	C				A	B	C					A	B	C	
EXISTING LOAD	EX			EX	20	1	1			2	1	20	EX	EX	EX	EXISTING LOAD	
EXISTING LOAD		EX		EX	30	1	3			4	1	20	EX	EX	EX	EXISTING LOAD	
EXISTING LOAD			EX	EX	20	1	5			6	1	20	EX	EX	EX	EXISTING LOAD	
EXISTING LOAD	EX			EX	20	1	7			8	1	20	EX	EX	EX	EXISTING LOAD	
EXISTING LOAD		EX		EX	20	1	9			10	1	20	EX	EX	EX	EXISTING LOAD	
EXISTING LOAD			EX	EX	20	1	11			12	1	20	EX	EX	EX	EXISTING LOAD	
EXISTING LOAD	EX			EX	20	1	13			14	1	20	EX	EX	EX	EXISTING LOAD	
EXISTING LOAD		EX		EX	20	1	15			16	3	20	EX	EX	EX	EXISTING LOAD	
EXISTING LOAD			EX	EX	20	1	17			18	1	20	EX	EX	EX	EXISTING LOAD	
EXISTING LOAD	EX			EX	30	1	19			20	1	20	EX	EX	EX	EXISTING LOAD	
EXISTING LOAD		EX		EX	30	1	21			22	1	20	EX	EX	EX	EXISTING LOAD	
EXISTING LOAD			EX	EX	20	1	23			24	1	20	EX	EX	EX	EXISTING LOAD	
EXISTING LOAD	EX			EX	20	1	25			26	1	20	EX	EX	EX	EXISTING LOAD	
RECP.T. BELOW PANEL			0.18	12	20	1	27			28	1	20	EX	EX	EX	EXISTING LOAD	
SPARE		X		X	20	1	29			30	1	20	EX	EX	EX	EXISTING LOAD	
SPARE	X			X	20	1	31			32	1	20	X	X		SPARE	
SPARE		X		X	20	1	33			34	1	20	X	X		SPARE	
SPARE			X	X	20	1	35			36	1	20	X	X		SPARE	
SPARE		X		X	20	1	37			38	1	20	X	X		SPARE	
SPARE			X	X	20	1	39			40	1	20	X	X		SPARE	
SPARE		X		X	20	1	41			42	1	20	X	X		SPARE	

NOTES: ① EXISTING BREAKER IN EXISTING PANEL HAS TWO WIRES CONNECTED TO IT. REWIRE TO TWO SEPARATE BREAKERS IN NEW PANEL.  
② PROVIDE GFCI BREAKER.

NEW REPLACEMENT PANELBOARD "CL" SCHEDULE																	
100A, 120/208V, 1ø, 3ø, SN, GND BUS, SURFACE MOUNTED, NEMA-1 INDOOR ENCLOSURE 100A MLO, 10KAIC FULLY RATED, TOP FEED																	
LOAD SERVED	LOAD			WIRE SIZE	BKR TRIP	POLE	PHASE			OCT NO	POLE	BKR TRIP	WIRE SIZE	LOAD			LOAD SERVED
	A	B	C				A	B	C					A	B	C	
EXISTING LOAD	EX			EX	20	1	1			2	1	20	EX	EX	EX	SPARE	
EXISTING LOAD		EX		EX	20	1	3			4	1	20	EX	EX	EX	EXISTING LOAD	
EXISTING LOAD			EX	EX	20	1	5			6	1	20	EX	EX	EX	EXISTING LOAD	
EXISTING LOAD	EX			EX	20	1	7			8	1	20	EX	EX	EX	EXISTING LOAD	
EXISTING LOAD		EX		EX	20	1	9			10	1	20	EX	EX	EX	EXISTING LOAD	
EXISTING LOAD			EX	EX	20	1	11			12	1	20	EX	EX	EX	EXISTING LOAD	
SPARE	X			X	20	1	13			14	1	20	X	X		SPARE	
SPARE		X		X	20	1	15			16	1	20	X	X		SPARE	
EXISTING LOAD	EX			EX	20	1	17			18	1	20	X	X		SPARE	
EXISTING LOAD		EX		EX	20	1	19			20	1	20	EX	EX	EX	EXISTING LOAD	
EXISTING LOAD			EX	EX	20	1	21			22	1	20	X	X		SPARE	
SPARE	X			X	20	1	23			24	1	20	X	X		SPARE	
SPARE		X		X	20	1	25			26	1	20	X	X		SPARE	
SPARE			X	X	20	1	27			28	1	20	X	X		SPARE	
SPARE	X			X	20	1	29			30	1	20	X	X		SPARE	

NOTES:

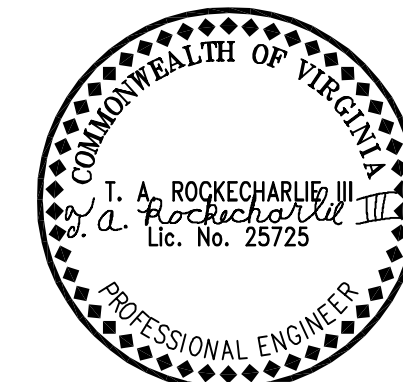
NEW REPLACEMENT PANELBOARD "LC" SCHEDULE ②																	
225A, 120/208V, 3ø, 4W, SN, GND BUS, RECESSED, NEMA-1 INDOOR ENCLOSURE 225A MLO, 10KAIC FULLY RATED (MAXIMUM AVAILABLE FC = 5,096 AMPS), BOTTOM FEED																	
LOAD SERVED	LOAD			WIRE SIZE	BKR TRIP	POLE	PHASE			OCT NO	POLE	BKR TRIP	WIRE SIZE	LOAD			LOAD SERVED
	A	B	C				A	B	C					A	B	C	
EXISTING LOAD	EX			EX	20	1	1			2	1	20	EX	EX	EX	EXISTING LOAD	
EXISTING LOAD		EX		EX	20	1	3			4	1	20	EX	EX	EX	EXISTING LOAD	
EXISTING LOAD			EX	EX	20	1	5			6	1	20	EX	EX	EX	EXISTING LOAD	
EXISTING LOAD	EX			EX	20	1	7			8	1	20	EX	EX	EX	EXISTING LOAD	
EXISTING LOAD		EX		EX	20	1	9			10	1	20	EX	EX	EX	EXISTING LOAD	
EXISTING LOAD			EX	EX	20	1	11			12	1	20	EX	EX	EX	EXISTING LOAD	
EXISTING LOAD	EX			EX	20	1	13			14	1	20	EX	EX	EX	EXISTING LOAD	
EXISTING LOAD		EX		EX	20	1	15			16	1	20	EX	EX	EX	EXISTING LOAD	
EXISTING LOAD			EX	EX	20	1	17			18	1	20	EX	EX	EX	EXISTING LOAD	
EXISTING LOAD	EX			EX	20	1	19			20	1	20	EX	EX	EX	EXISTING LOAD	
EXISTING LOAD		EX		EX	20	1	21			22	1	20	EX	EX	EX	EXISTING LOAD	
EXISTING LOAD			EX	EX	20	1	23			24	1	20	X	X		SPARE	
EXISTING LOAD	EX			EX	20	1	25			26	1	20	X	X		SPARE	
EXISTING LOAD		EX		EX	20	1	27			28	1	20	X	X		SPARE	
EXISTING LOAD			EX	EX	20	1	29			30	1	20	X	X		SPARE	
EXISTING LOAD	EX			EX	20	1	31			32	1	20	EX	EX	EX	EXISTING LOAD	
EXISTING LOAD		EX		EX	20	1	33			34	1	20	EX	EX	EX	EXISTING LOAD	
EXISTING LOAD			EX	EX	20	1	35			36	1	20	EX	EX	EX	EXISTING LOAD	
EXISTING LOAD	EX			EX	20	1	37			38	1	20	X	X		SPARE	
EXISTING LOAD		EX		EX	20	1	39			40	1	20	X	X		SPARE	
EXISTING LOAD			EX	EX	20	1	41			42	1	20	X	X		SPARE	
SPARE	X			X	20	1	43			44	1	20	X	X		SPARE	
SPARE		X		X	20	1	45			46	1	20	X	X		SPARE	
SPARE			X	X	20	1	47			48	1	20	X	X		SPARE	

NOTES: ① EXISTING BREAKER IN EXISTING PANEL HAS TWO WIRES CONNECTED TO IT. REWIRE TO TWO SEPARATE BREAKERS IN NEW PANEL.  
② PROVIDE (2) 1-1/4" EC'S STUBBED ABOVE NEAREST ACCESSIBLE CEILING FOR FUTURE USE. PROVIDE LABELS 'LC, 1-1/4"', FUTURE USE.

NEW REPLACEMENT PANELBOARD "LD" SCHEDULE																	
100A, 277/480V, 3ø, 4W, SN, GND BUS, RECESSED, NEMA-1 INDOOR ENCLOSURE 100A MLO, 10KAIC FULLY RATED (MAXIMUM AVAILABLE FC = 9,446 AMPS), BOTTOM FEED																	
LOAD SERVED	LOAD			WIRE SIZE	BKR TRIP	POLE	PHASE			OCT NO	POLE	BKR TRIP	WIRE SIZE	LOAD			LOAD SERVED
	A	B	C				A	B	C					A	B	C	
EXISTING LOAD	EX			EX	20	1	1			2	1	20	EX	EX	EX	EXISTING LOAD	
EXISTING LOAD		EX		EX	20	1	3			4	1	20	EX	EX	EX	EXISTING LOAD	
EXISTING LOAD			EX	EX	20	1	5			6	1	20	EX	EX	EX	EXISTING LOAD	
SPARE	X			X	20	1	7			8	1	20	EX	EX	EX	EXISTING LOAD	
EXISTING LOAD		EX		EX	20	1	9			10	1	20	EX	EX	EX	EXISTING LOAD	
EXISTING LOAD			EX	EX	20	1	11			12	1	20	EX	EX	EX	EXISTING LOAD	
EXISTING LOAD	EX			EX	20	1	13			14	1	20	X	X		SPARE	
EXISTING LOAD		EX		EX	20	1	15			16	1	20	X	X		SPARE	
EXISTING LOAD			EX	EX	20	1	17			18	1	20	X	X		SPARE	
EXISTING LOAD	EX			EX	20	1	19			20	1	20	X	X		SPARE	
SPACE		X		X	X	1	21			22	1	X	X		X	SPACE	
SPACE		X		X	X	1	23			24	1	X	X		X	SPACE	
SPACE			X	X	X	1	25			26	1	X	X		X	SPACE	
SPACE		X		X	X	1	27			28	1	X	X		X	SPACE	
SPACE			X	X	X	1	29			30	1	X	X		X	SPACE	

NOTES:

NEW REPLACEMENT PANELBOARD "PF" SCHEDULE																	
225A, 120/208V, 3ø, 4W, SN, GND BUS, SURFACE MOUNTED, NEMA-1 INDOOR ENCLOSURE 225A MLO, 22KAIC FULLY RATED (MAXIMUM AVAILABLE FC = 10,491 AMPS), TOP FEED																	
LOAD SERVED	LOAD			WIRE SIZE	BKR TRIP	POLE	PHASE			OCT NO	POLE	BKR TRIP	WIRE SIZE	LOAD			LOAD SERVED
	A	B	C				A	B	C					A	B	C	
EXISTING LOAD	EX			EX	20	1	1			2	1	20	EX	EX	EX	EXISTING LOAD	
SPARE	X			X	20	1	3			4	1	20	EX	EX	EX	EXISTING LOAD	
SPARE		X		X	20	1	5			6	3	20	EX	EX	EX	EXISTING LOAD	
EXISTING LOAD	EX			EX	20	1	7			8	1	20	EX	EX	EX	EXISTING LOAD	
SPARE	X			X	20	1	9			10	1	20	EX	EX	EX	EXISTING LOAD	
EXISTING LOAD		EX		EX	20	1	11			12	3	20	EX	EX	EX	EXISTING LOAD	
EXISTING LOAD			EX	EX	20	1	13			14	1	20	EX	EX	EX	EXISTING LOAD	
EXISTING LOAD	EX			EX	100	3	15			16	1	20	EX	EX	EX	EXISTING LOAD	
EXISTING LOAD		EX		EX	20	1	17			18	1	20	EX				



**SIMMONS,  
ROCKECHARLIE  
AND PRINCE, INC.**

CONSULTING MECHANICAL  
AND ELECTRICAL ENGINEERS

10150 STAPLES MILL ROAD  
SUITE A  
GLEN ALLEN, VA 23060  
PHONE: (804) 262-7323  
WebSite: www.srpeng.com

COPYRIGHT © SIMMONS, ROCKECHARLIE AND PRINCE, INC. - ALL RIGHTS RESERVED.  
THIS DRAWING MAY NOT BE USED IN ANY MANNER NOR REPRODUCED OR SCANNED IN ANY FORM WITHOUT PRIOR WRITTEN CONSENT OF SIMMONS, ROCKECHARLIE AND PRINCE, INC.

**JOB NAME:**  
ALBEMARLE  
HIGH SCHOOL  
  
**ELECTRICAL PANEL  
REPLACEMENT**

2775 HYDRAULIC RD.,  
CHARLOTTESVILLE,  
VIRGINIA 22901

**DRAWING TITLE:**  
FLOOR PLANS -  
ELECTRICAL

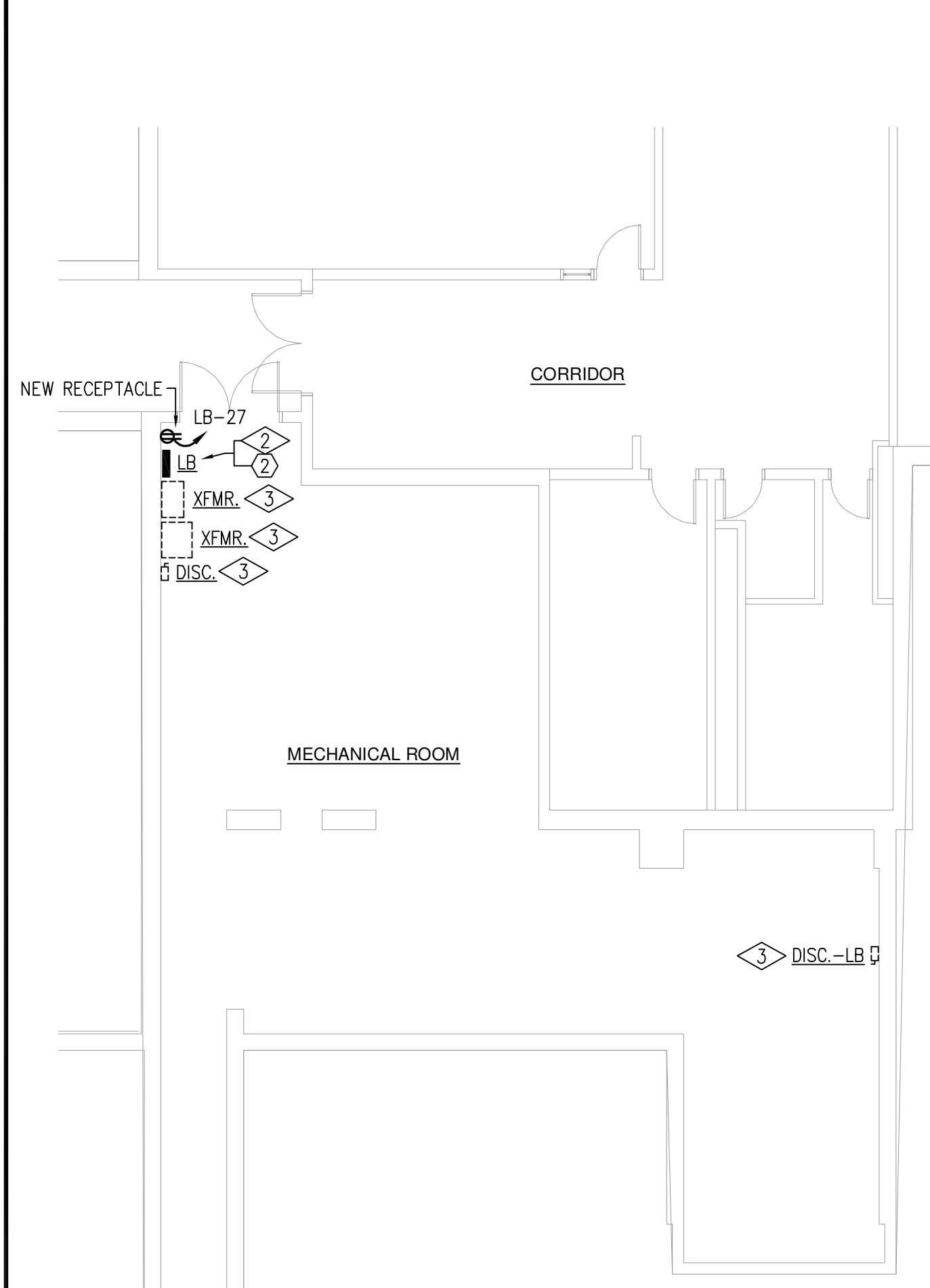
**REVISIONS:**  
NO. DATE DESCRIPTION

NO.	DATE	DESCRIPTION

**DRAWN BY:** RKCM **CHECKED BY:** RKCM

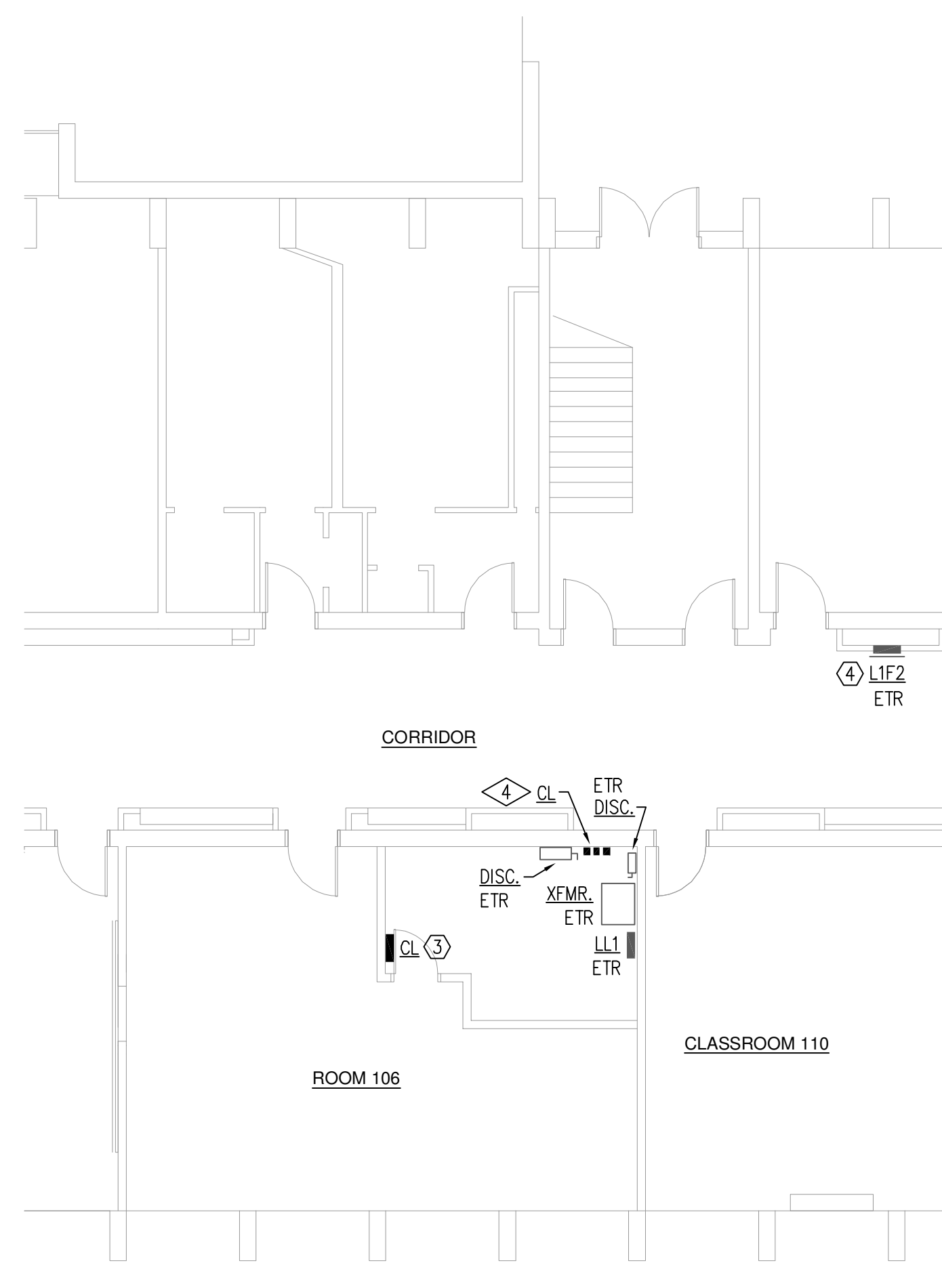
**COMM. NO.:** 25065 **DATE:** 1-16-26

**SHEET NO.:**  
E1.3  
OF: 3



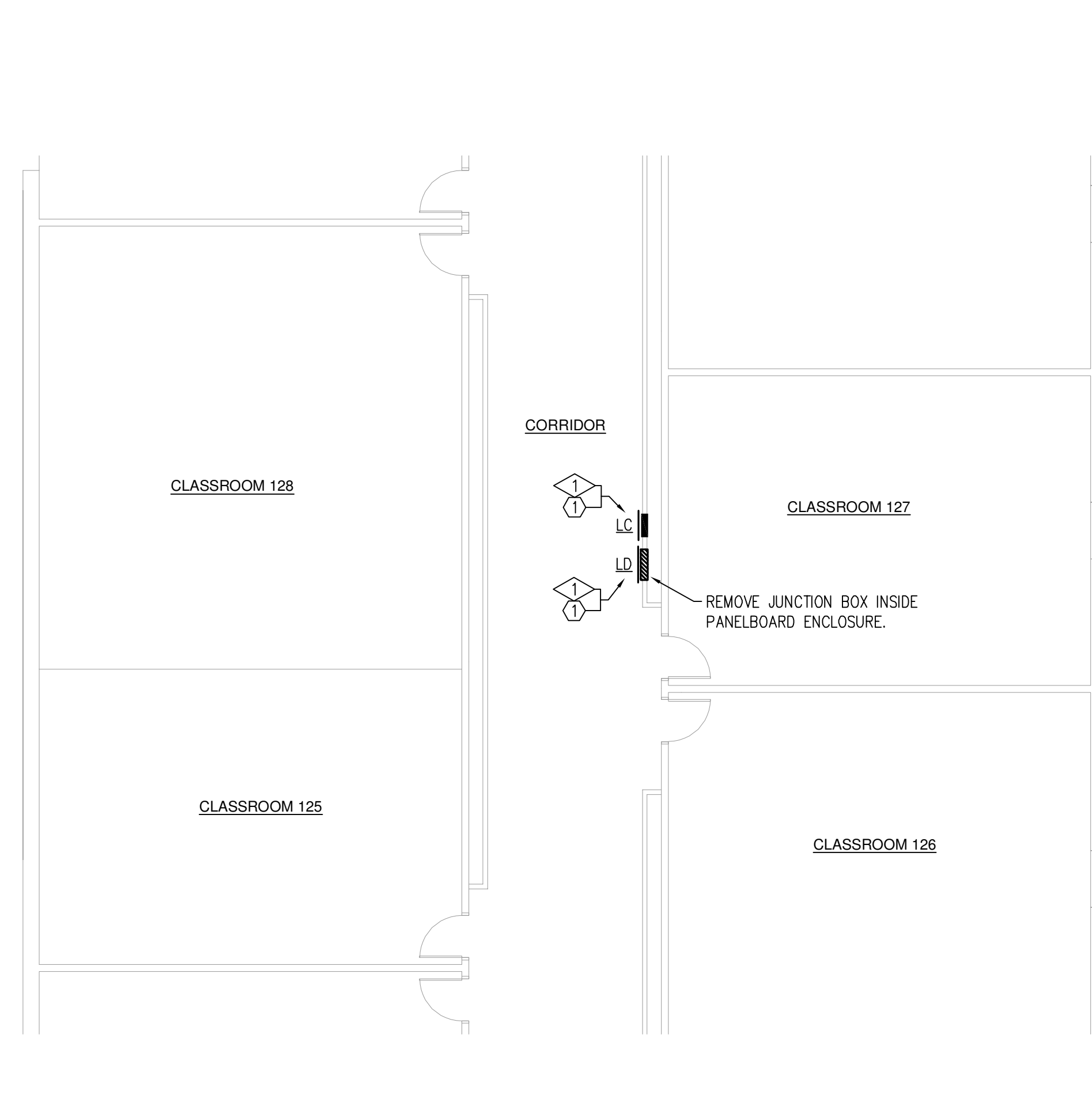
**PARTIAL BASEMENT PLAN - ELECTRICAL**

SCALE: 1/8" = 1'-0"



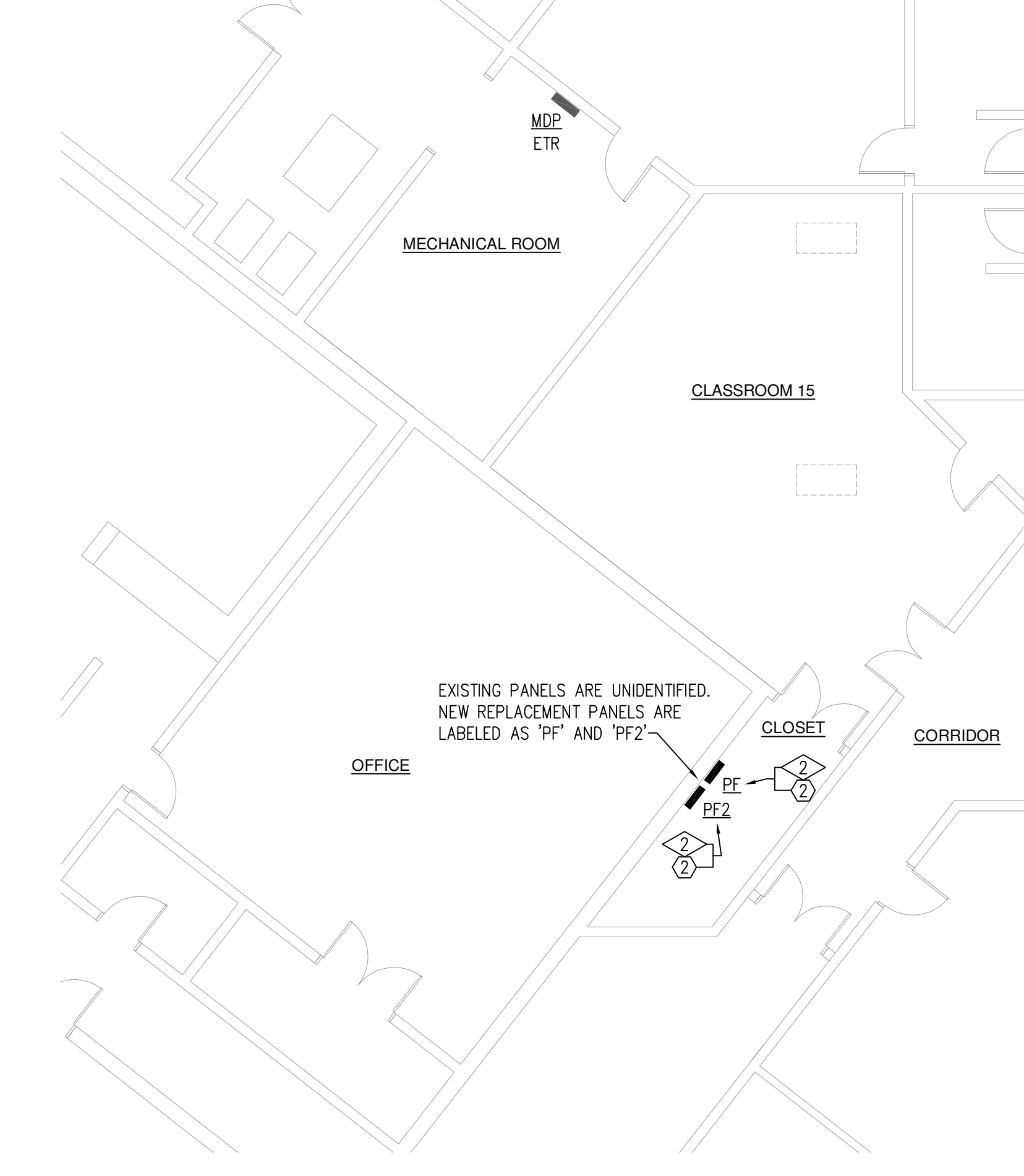
**PARTIAL FIRST FLOOR PLAN - AREA A - ELECTRICAL**

SCALE: 1/8" = 1'-0"



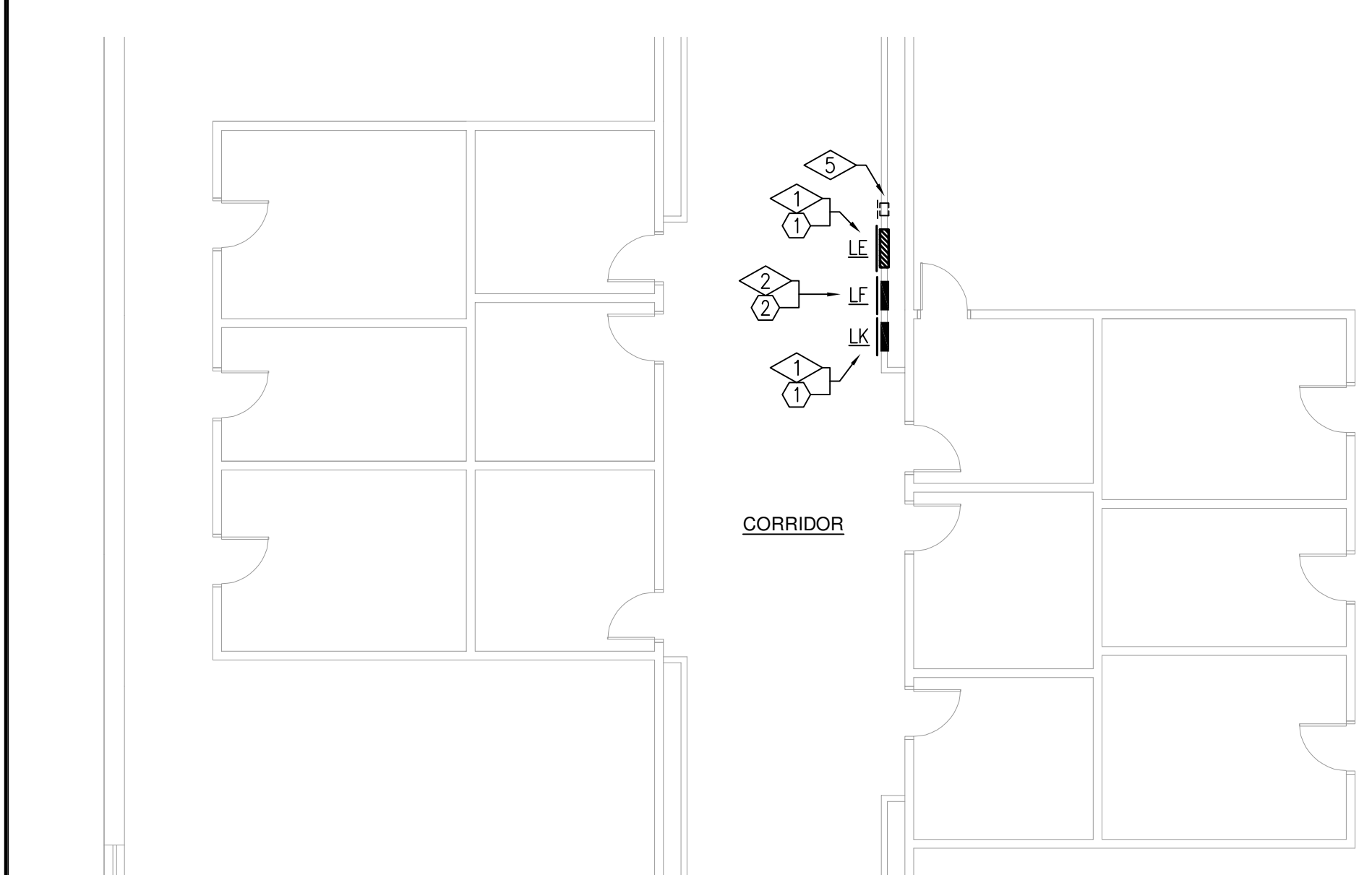
**PARTIAL FIRST FLOOR PLAN - AREA B - ELECTRICAL**

SCALE: 1/8" = 1'-0"



**PARTIAL FIRST FLOOR PLAN - AREA C - ELECTRICAL**

SCALE: 1/8" = 1'-0"



**PARTIAL SECOND FLOOR PLAN - ELECTRICAL**

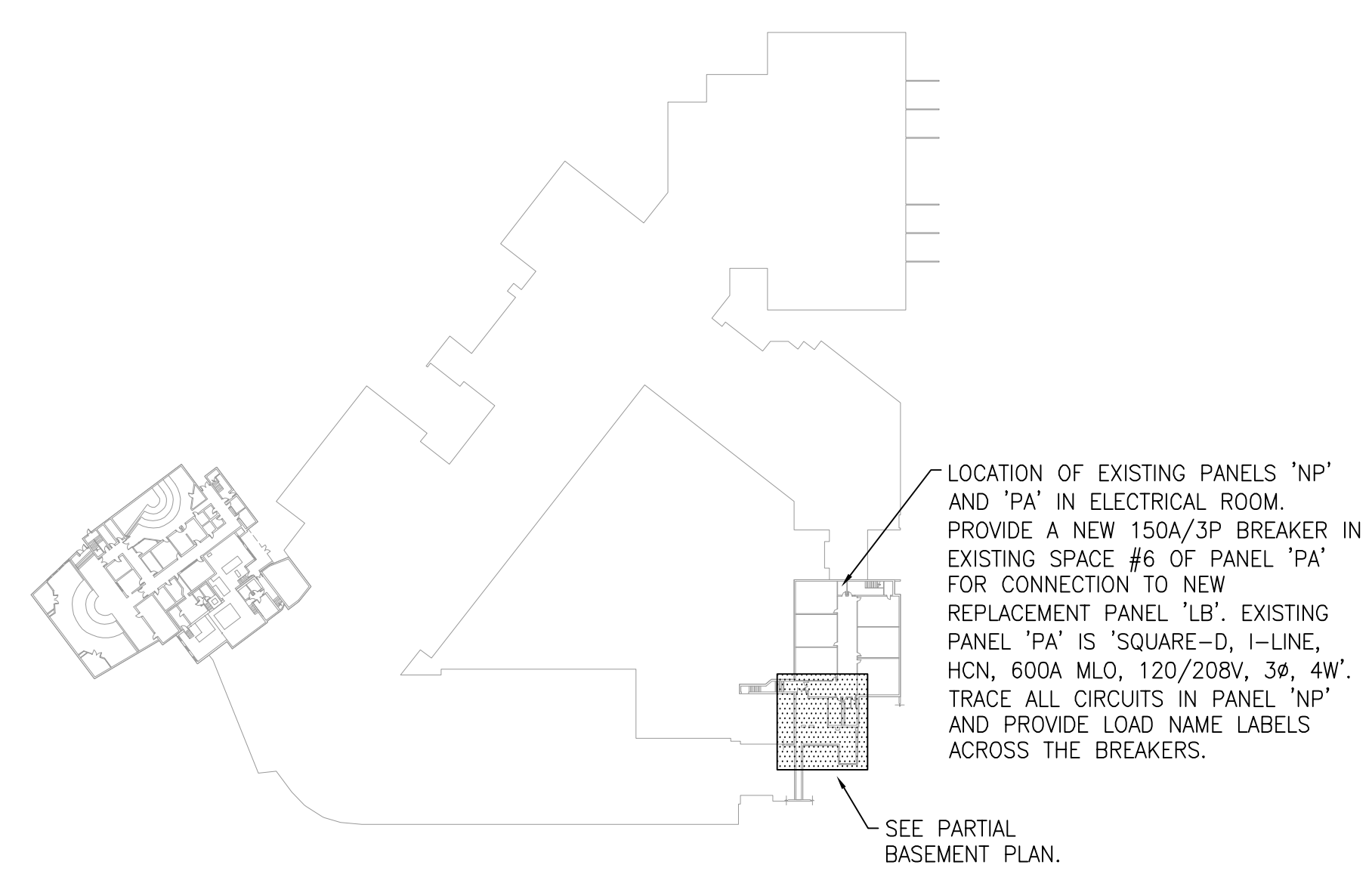
SCALE: 1/8" = 1'-0"

**ELECTRICAL DEMOLITION NOTES**

- REMOVE EXISTING PANEL, INCLUDING THE ENCLOSURE. RETAIN ALL EXISTING FEEDER AND BRANCH CIRCUIT WIRE AND CONDUIT FOR RECONNECTION TO NEW REPLACEMENT PANEL. SEE PANEL SCHEDULE FOR MORE DETAILS.
- REMOVE EXISTING PANEL, INCLUDING THE ENCLOSURE. REMOVE INCOMING FEEDER WIRE AND CONDUIT BACK TO SOURCE. RETAIN ALL BRANCH CIRCUIT WIRE AND CONDUIT FOR RECONNECTION TO NEW REPLACEMENT PANEL. SEE POWER RISER AND PANEL SCHEDULE FOR MORE DETAILS.
- REMOVE (1) EXISTING ABANDONED TRANSFORMER (MOUNTED HIGH ON WALL) ASSOCIATED WITH PANEL 'LB'. REMOVE WORKING TRANSFORMER ASSOCIATED WITH PANEL 'LB' AND HAND OVER TO OWNER. REMOVE (2) DISCONNECT SWITCHES ASSOCIATED WITH PANEL 'LB'. REMOVE ALL WIRE AND CONDUIT ASSOCIATED WITH THE (2) TRANSFORMERS AND THE (2) DISCONNECT SWITCHES. REMOVE CONCRETE PAD ASSOCIATED WITH THE TRANSFORMER. LEVEL WITH FLOOR. PATCH AND FINISH TO MATCH ADJACENT FLOOR. SEE POWER RISER FOR MORE DETAILS.
- REMOVE EXISTING PANEL, INCLUDING THE ENCLOSURE. REMOVE INCOMING FEEDER WIRE AND CONDUIT BACK TO SOURCE. REMOVE ALL BRANCH CIRCUIT WIRE AND CONDUIT TO A NEW JUNCTION BOX ABOVE CEILING FOR EXTENSION TO NEW REPLACEMENT PANEL AT A NEW LOCATION. REPLACE EXISTING ROMEX CABLE (~30') WITH #12 WIRE IN 3/4" C.
- REMOVE EXISTING ABANDONED TIME CLOCK ENCLOSURE AND ALL ASSOCIATED WIRE AND CONDUIT. INFILL WITH BLOCK AND MORTAR OR WITH ADJACENT MATCHING MATERIALS. PATCH AND PAINT AROUND THE ENCLOSURE TO MATCH ADJACENT SURFACES. PROVIDE NEW WALL TILES MATCHING EXISTING.

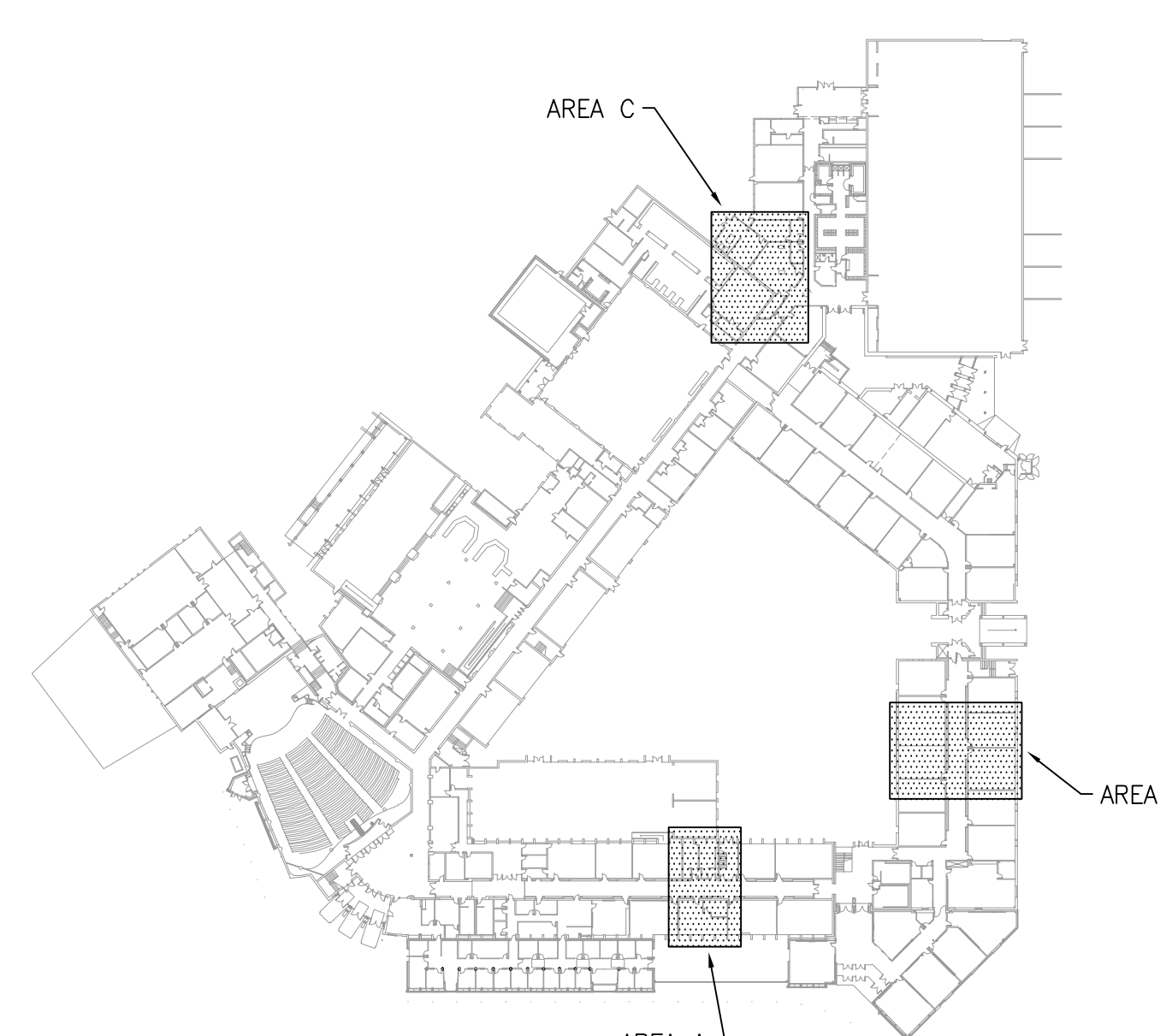
**ELECTRICAL NEW WORK NOTES**

- PANELBOARD REPLACEMENT NOTE (APPLIES TO ALL PANELBOARDS):**  
EXISTING PANELBOARD ENCLOSURES SHALL NOT BE REUSED. BREAKER LAYOUT IN REPLACEMENT PANEL SHALL MATCH EXISTING TO AVOID ANY SPLICES. CUT BACK EXISTING WIRE AND CONDUIT AS NEEDED TO ALLOW FOR RECONNECTION. CONFIRM PHASE ROTATION BEFORE RECONNECTION. ALSO PROVIDE NEW PULL BOXES AS NEEDED TO ALLOW FOR RECONNECTION OF EXISTING WIRE AND CONDUIT. CONTRACTOR SHALL SAW CUT EXISTING WALLS AS NEEDED TO ALLOW FOR THE INSTALLATION OF NEW ENCLOSURES. WHERE NEW PANELBOARD ENCLOSURES ARE SMALLER THAN EXISTING ENCLOSURES, CONTRACTOR SHALL INFILL WITH BLOCK AND MORTAR OR WITH ADJACENT MATCHING MATERIALS. PATCH AND PAINT AROUND REPLACEMENT PANELS TO MATCH ADJACENT SURFACES. REPLACE WALL TILES AROUND RECESSED PANELBOARDS TO MATCH EXISTING.
- NEW REPLACEMENT PANEL IN PLACE OF EXISTING. RECONNECT ALL EXISTING RETAINED FEEDER AND BRANCH CIRCUIT WIRE AND CONDUIT. SEE PANEL SCHEDULE FOR MORE DETAILS.
  - NEW REPLACEMENT PANEL IN PLACE OF EXISTING. PROVIDE NEW FEEDER WIRE AND CONDUIT AS SHOWN IN THE POWER RISER. RECONNECT ALL EXISTING RETAINED BRANCH CIRCUIT WIRE AND CONDUIT. SEE PANEL SCHEDULE FOR MORE DETAILS.
  - NEW REPLACEMENT PANEL AT NEW LOCATION. PROVIDE NEW FEEDER WIRE AND CONDUIT AS SHOWN IN THE POWER RISER. EXTEND ALL EXISTING BRANCH CIRCUIT WIRE AND CONDUIT FROM EXISTING LOCATION. NEW WIRE SHALL MATCH EXISTING. SEE DEMOLITION NOTE #4. SEE POWER RISER AND PANEL SCHEDULE FOR MORE DETAILS.
  - CONTRACTOR SHALL TRACE SOURCE PANEL OF PANEL 'L1F2' AND PROVIDE FEEDER BREAKER AND WIRE SIZE INFORMATION TO ENGINEER.



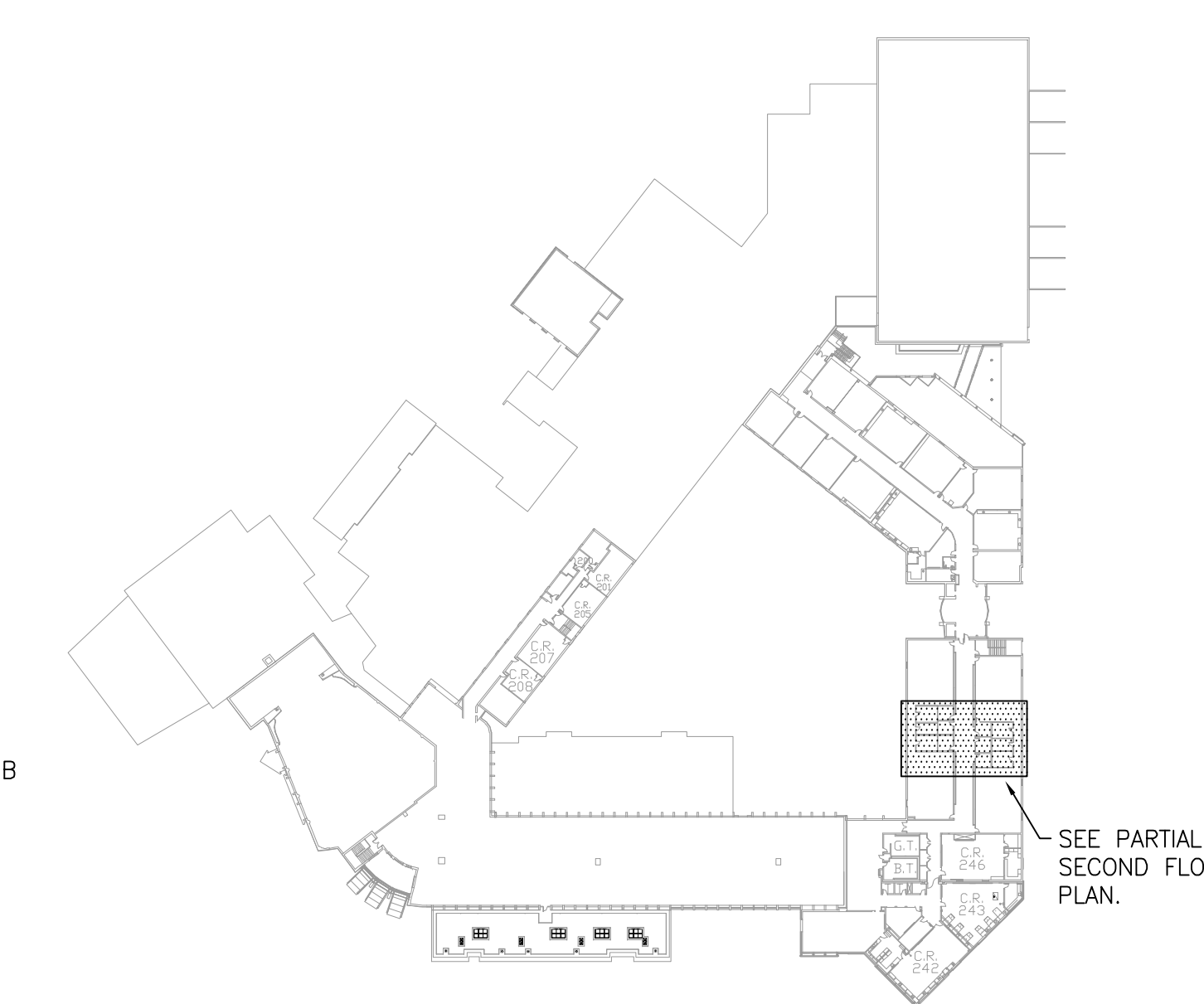
**KEY PLAN - BASEMENT**

NOT TO SCALE



**KEY PLAN - FIRST FLOOR**

NOT TO SCALE  
NOTE: SEE PARTIAL FIRST FLOOR PLANS.



**KEY PLAN - SECOND FLOOR**

NOT TO SCALE