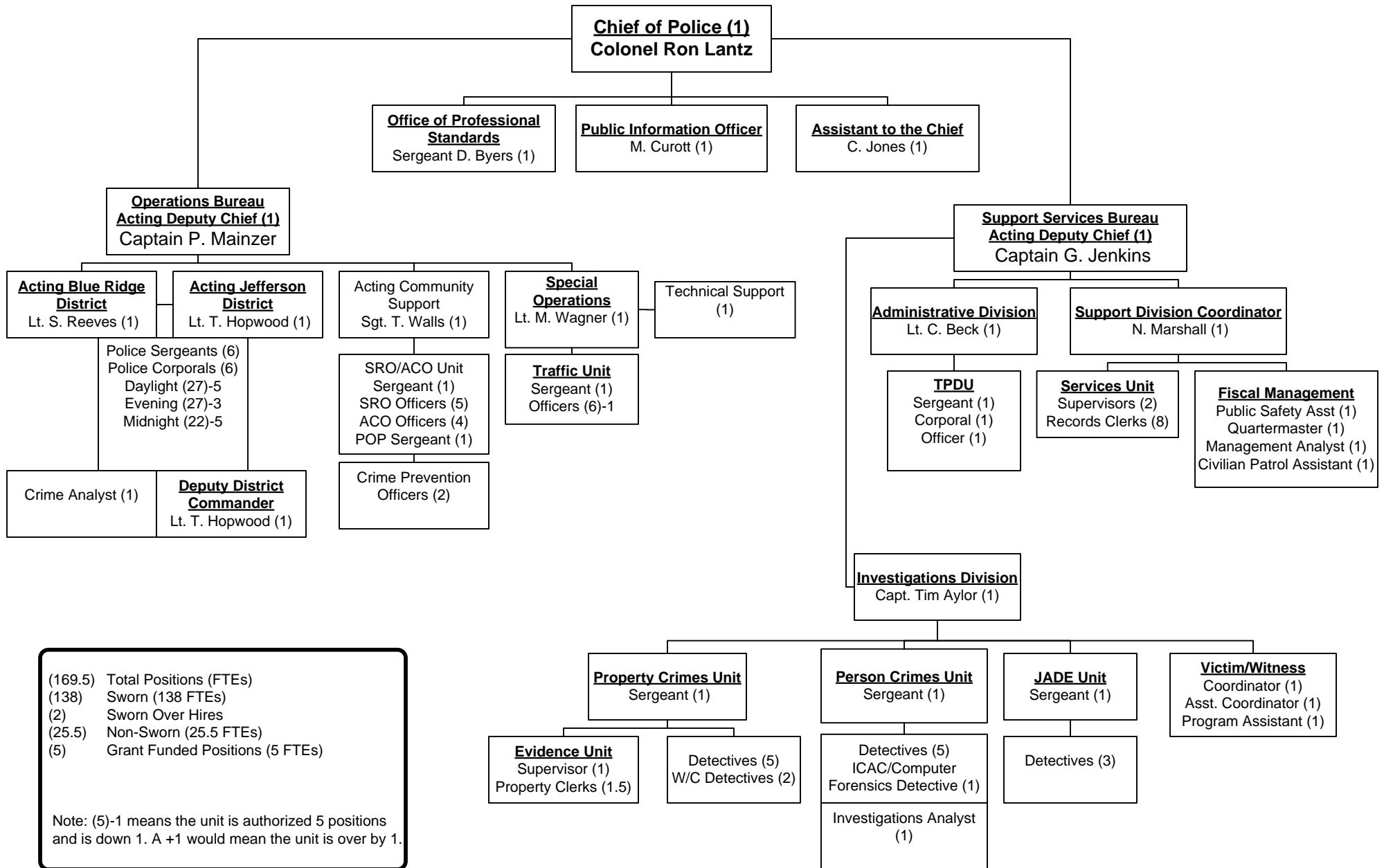


Albemarle County Police Department

8/16/2016

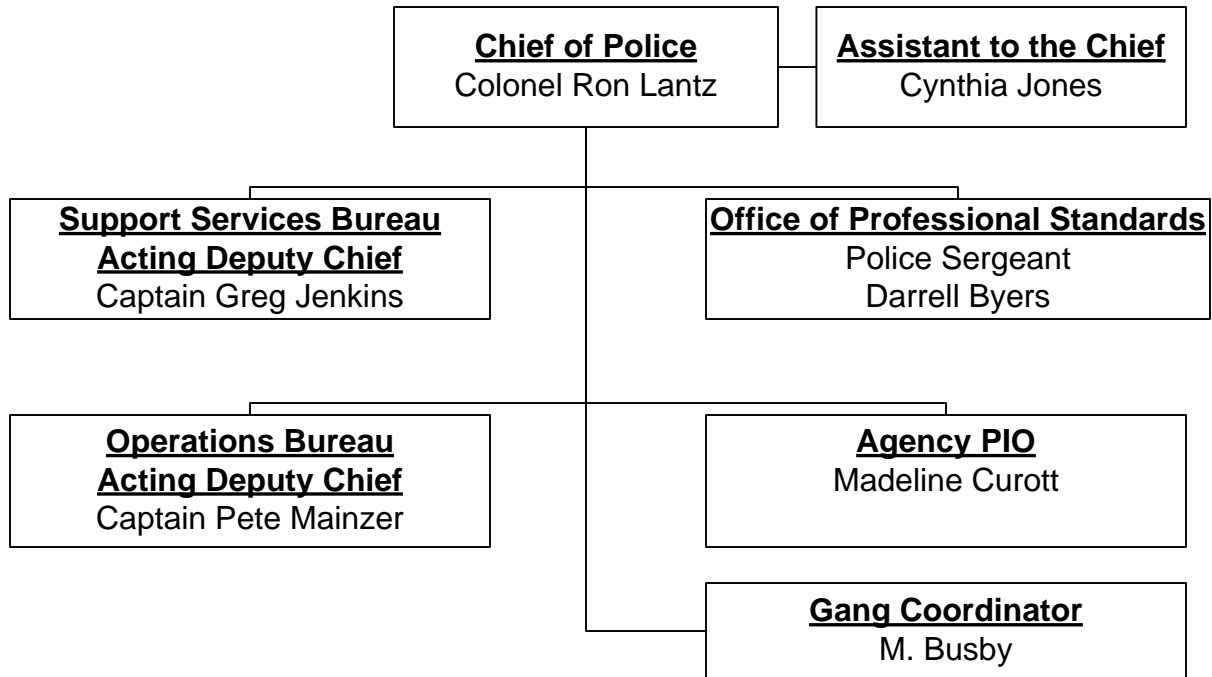


(169.5) Total Positions (FTEs)
 (138) Sworn (138 FTEs)
 (2) Sworn Over Hires
 (25.5) Non-Sworn (25.5 FTEs)
 (5) Grant Funded Positions (5 FTEs)

Note: (5)-1 means the unit is authorized 5 positions and is down 1. A +1 would mean the unit is over by 1.

**Albemarle County Police Department
Office of the Chief of Police**

8/16/2016



**Albemarle County Police Department
Operations Bureau**

8/16/2016

Acting Deputy Chief
Captain Pete Mainzer

**Acting Blue Ridge
District Commander**
Lieutenant Sean Reeves

**Acting Jefferson District
Commander**
Lieutenant Todd
Hopwood

**Acting Community
Support Division
Commander**
Sergeant Terry Walls

**Special Operations
Division Commander**
Lieutenant Mike Wagner

Albemarle County Police Department Blue Ridge District

8/16/2016

Acting Blue Ridge District Commander

Lieutenant Sean Reeves

Deputy District Commander

Lt. Todd Hopwood

Daylight Sergeant

J. Utz

Evening Sergeant

J. Shenk

Midnight Sergeant

M. Powers

Daylight Corporal

D. Wallace

Evening Corporal

J. Marden

Midnight Corporal

T. Carrico

Daylight Officers

G. Anastopoulos
S. Byram
K. Goforth
J. Larkin
R. Scopelliti
C. Townsend
B. Underwood
R. Vanderveer
R. Warfel

K-9 Officer

D. Mikesh

Evening Officers

J. Beach
D. Huffman
K. Kane
R. Knight
D. Meyer
C. Mikus
J. Morris
M. O'Neill
R. Sheridan
L. Smith
S. Thomas

Midnight Officers

J. Hickory
P. Inge
P. Johnson
C. Kenney
C. Levy
P. O'Malley
J. Taylor
K. White

Albemarle County Police Department Jefferson District

8/16/2016

Acting Jefferson District Commander
Lieutenant Todd Hopwood

Crime Analyst
J. Zawitz

Daylight Sergeant
G. Pistulka

Evening Sergeant
S. Hackney

Midnight Sergeant
S. Wilkins

Daylight Corporal
T. Martin

Evening Corporal
M. Easton

Midnight Corporal
K. Miller

Daylight Officers
C. Flippin
B. Clark
J. George
D. Hutchinson
T. Lowery
C. Marshall
S. McCall
C. Payne
J. Rigsby
G. Riley
J. Turner
B. Wade

Evening Officers
A. Bryant
D. Davis
J. DeLange
C. Felts
J. George
J. Mains
H. Mears
C. Melton
D. Meyer
J. Potter
M. Saulle
C. Stankwitz

Midnight Officers
A. Burford
D. Leitch
M. Mays
T. Payne
J. Rader
J. Snyder
D. Torres

K-9 Officer
B. Saulle

K-9 Officer
D. Hooper
L. Mahon

**Albemarle County Police Department
Community Support Division**

8/16/2016

Acting Community Support Division

Sergeant T. Walls

School Resource

ACO Unit

Sergeant Greg Davis

Crime Prevention Officers

A. Gluba
S. Watson

POP Sergeant

T. Walls

School Resource Officers

R. Davis
A. Gracia
A. Jamerson
L. Proffitt
D. Zambrotta

Animal Control Officers

L. Crickenberger
K. Maddox
S. Tate
S. Urry

Albemarle County Police Department Special Operations Division		
	8/16/2016	

Special Operations Division
Lieutenant Mike Wagner

Traffic Unit
Sergeant Miller Stoddard

Technical Support
Officer D. Hahn

Traffic Unit
J. DeLange
R. Jamerson
A. Muncy
P. Quillon
D. Rhodes

Albemarle County Police Department Support Services Bureau		
	8/16/2016	

Acting Deputy Chief
Captain Gregory Jenkins

Administrative Division
Lieutenant Chris Beck

Support Division Coordinator
Nicole Marshall

Investigations Division
Captain Tim Aylor

**Albemarle County Police Department
Administrative Division**

8/16/2016

Administrative Division
Lieutenant Chris Beck

Training & Recruitment
Sergeant Tim Seitz

**Training & Professional
Development Unit**
Corporal B. Reeves

Special Projects
Officer D. Reeves

New Recruits
A. Beem
C. Clarkson
G. Deering
N. Harlowe
D. Hayden
R. Kennedy
W. Nesselrodt
J. Weethee
J. Wright

**Albemarle County Police Department
Support Division**

8/16/2016

Support Division Coordinator
Nicole Marshall

Fiscal Management Unit

Public Safety Assistant
S. Caldwell

Management Analyst
vacant

Civilian Patrol Assistant
R. Thacker

Quartermaster
D. Meadows

Services Unit Supervisors

K. Bunch
J. Falkins

Records Clerks

A. Apat
C. Alger
T. Bruce
C. Henderson
T. Moyer
K. Olinger
D. Shortell

Albemarle County Police Department Investigations Division		
	8/16/2016	

Investigations Division
Captain Tim Aylor

