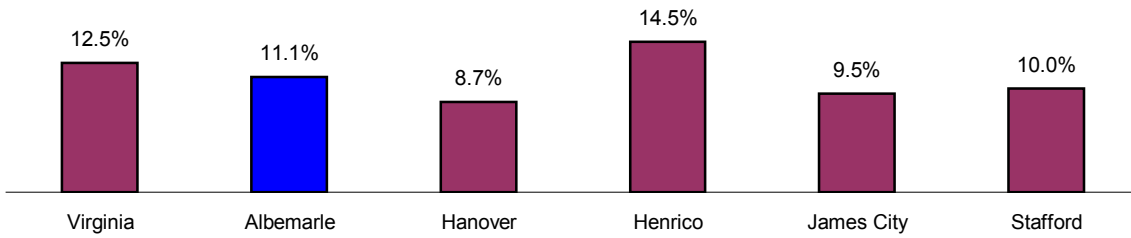


Albemarle County's Percentage of Single Parent Families Is the Third Highest Among the State and Peer Counties



Single Parent Families

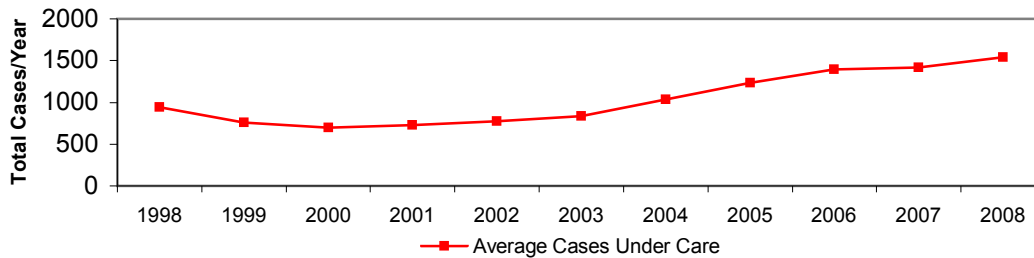
In 1999, 11% of Albemarle families were single parent families, fairly consistent with the state-wide 12% average. Albemarle County had more single parent families than two out of the four peer counties, yet ranked second highest in percentage.

	<u>Virginia</u>	<u>Albemarle</u>	<u>Hanover</u>	<u>Henrico</u>	<u>James City</u>	<u>Stafford</u>
Single Parent Families	232,218	2,347	2,147	10,146	1,333	2,443
% of Total Families with children	12%	11%	9%	14%	10%	10%

Methodology: Sum and then divide Male and Female Householders with Own Children <18 by Total Families
 Definition: Own Child -- A child under 18 years old who is a son or daughter by birth, marriage, or adoption.

Source: U.S. Census of Population, 2000 Table P15. June 2005.

Families Receiving Food Stamp Assistance



Number of Families Receiving Food Stamp Assistance

ACDSS Food Stamp Caseload Characteristics - Food Stamp Assistance Average Cases Under Care

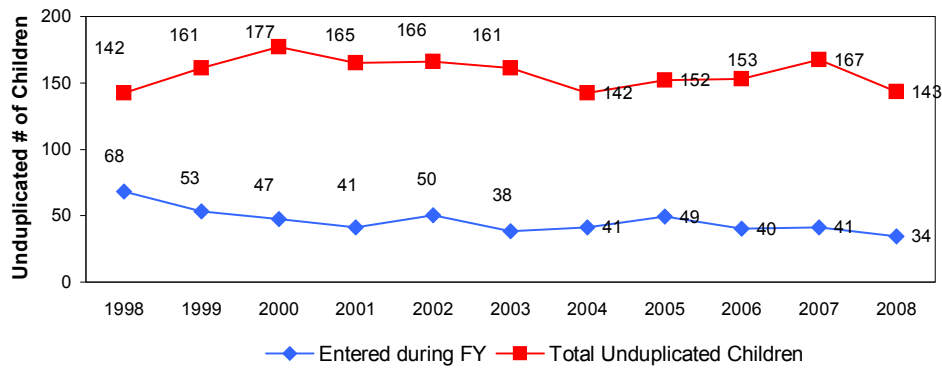
The total number of families receiving Food Stamp Assistance dropped from 1998 to 2000 but then began to increase from 2001 onward. This increase since 2001 is due, at least in part, to growth in Albemarle's population.

	<u>1998</u>	<u>1999</u>	<u>2000</u>	<u>2001</u>	<u>2002</u>	<u>2003</u>
Average Cases Under Care	940	758	699	726	772	835
	<u>2004</u>	<u>2005</u>	<u>2006</u>	<u>2007</u>	<u>2008</u>	
Average Cases Under Care	1,033	1,235	1,395	1,415	1,539	

Methodology: Average Cases Under Care represents the average monthly Public Assistance (PA)-type and non-PA-type case numbers.

Source: Jennifer Behrens, MSW, Albemarle County Department of Social Services.

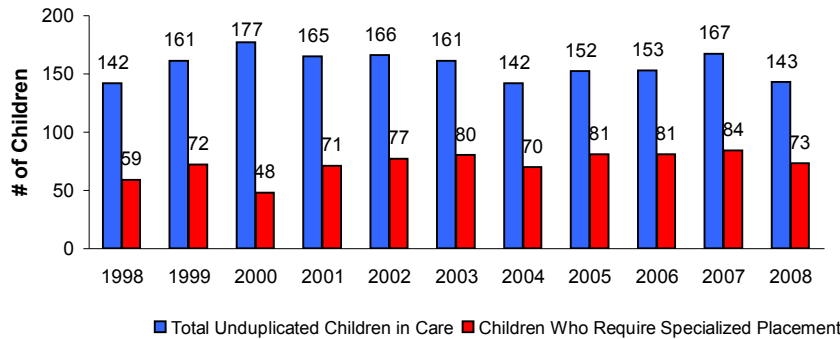
Children in Foster Care



	<u>1998</u>	<u>1999</u>	<u>2000</u>	<u>2001</u>	<u>2002</u>	<u>2003</u>
Entered during FY	68	53	47	41	50	38
Total Unduplicated Children in Care During FY	142	161	177	165	166	161

	<u>2004</u>	<u>2005</u>	<u>2006</u>	<u>2007</u>	<u>2008</u>
Entered during FY	41	49	40	41	34
Total Unduplicated Children in Care During FY	142	152	153	167	143

Children in Foster Care Requiring Specialized Placement



ACDSS Unduplicated Number of Children Entering Foster Homes Requiring Specialized Placement
 The percentage of foster care children requiring special placement has increased over the last decade. More than half of the children in foster care since 2004 have required a specialized placement.

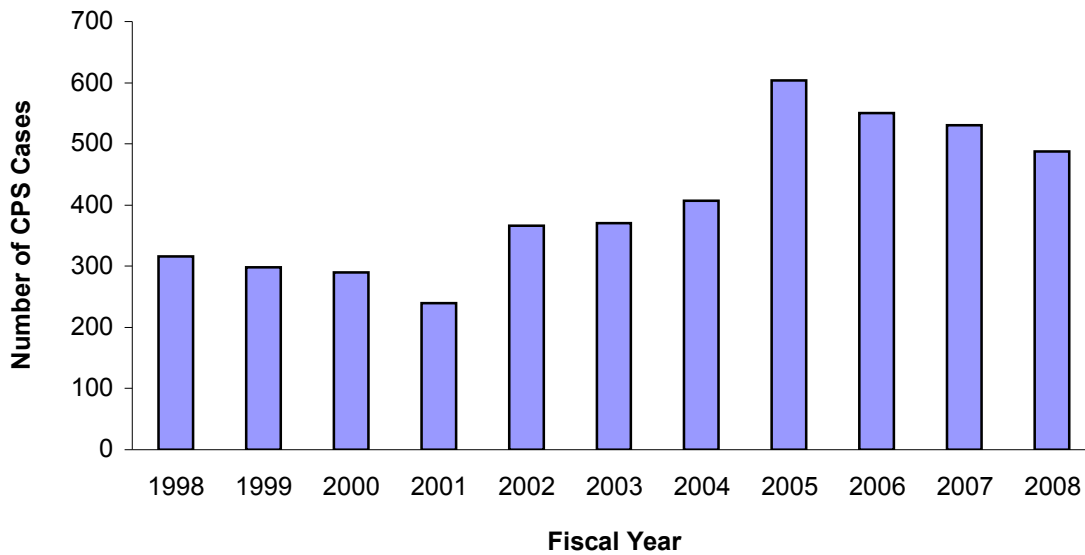
	<u>1998</u>	<u>1999</u>	<u>2000</u>	<u>2001</u>	<u>2002</u>	<u>2003</u>
Total Unduplicated Children in Care	142	161	177	165	166	161
Children Who Require Specialized Placement	59	72	48	71	77	80
Percentage of Children Requiring SP	41.5%	44.7%	27.1%	43.0%	46.4%	49.7%

	<u>2004</u>	<u>2005</u>	<u>2006</u>	<u>2007</u>	<u>2008</u>
Total Unduplicated Children in Care	142	152	153	167	143
Children Who Require Specialized Placement	70	81	81	84	73
Percentage of Children Requiring SP	49.3%	53.3%	52.9%	50.3%	51.0%

Source: VCWOW, July 23, 2008;
<https://ia.albemarle.org/DSS/Agency%20Stats/Forms/AllItems.aspx?RootFolder=%2fDSS%2fAgency%20Stats%2fFoster%20Care%20Stats&FolderCTID=&View=%7bD52C6E4C%2d0555%2d45D1%2dB0CB%2d2EA490D7F808%7d> July 28, 2008 (http://www.albemarle.org/departments.asp?department=soc_services&relpage=2875). July 2007.

Children Who Require Specialized Placement - data reflect average annual numbers

The Number of Child Protective Services Complaints Has Risen Overall Since FY 1998, but Has Declined Since FY 2005



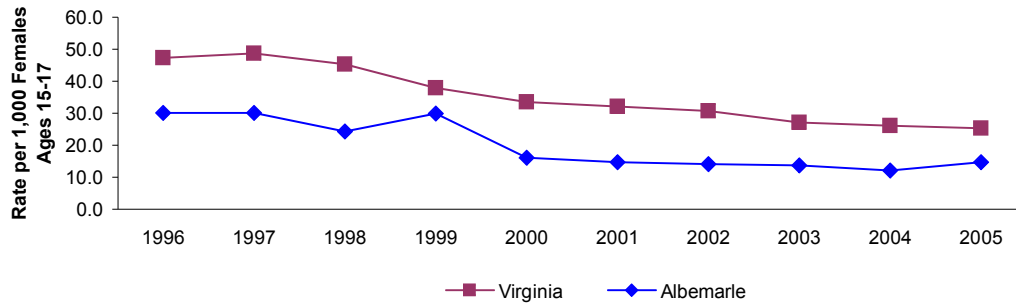
ACDSS Child Protective Services (CPS) Complaints

The number of complaints to the Albemarle County Child Protective Services Unit has risen over the past ten years. The number of complaints in 2008 was roughly 55% higher than was the number of complaints in 1998. Note however that, since 2005, the number of complaints has declined by about 19%.

	<u>1998</u>	<u>1999</u>	<u>2000</u>	<u>2001</u>	<u>2002</u>	<u>2003</u>
No. of Complaints	316	298	290	240	366	370
	<u>2004</u>	<u>2005</u>	<u>2006</u>	<u>2007</u>	<u>2008</u>	
No. of Complaints	407	604	550	531	488	

Source: 2005 through 2008 data come from Jennifer E. Behrens, MSW, Office of Program Accountability, Albemarle County Department of Social Services, 6 August 2008. Prior year data is taken from the 2005 Albemarle County *Community Profile*.

The Teen Pregnancy Rate Increased in 2005, but Remains below the State Rate



Teen Pregnancies

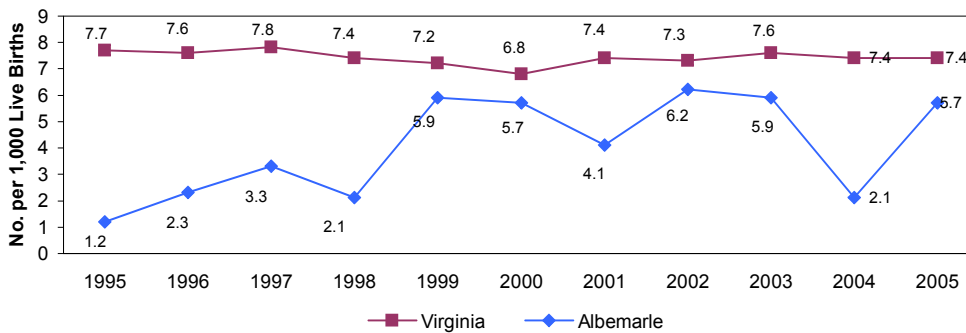
Pregnancies per 1,000 females age 15-17 had been decreasing every year after a slight increase in 1999. In 2005 approximately 15 females per 1,000 aged 15-17 became pregnant in Albemarle. This situation marked the County's first increase in six years, yet the County's number remains below the state's figure of 25.2.

	<u>1996</u>	<u>1997</u>	<u>1998</u>	<u>1999</u>	<u>2000</u>	<u>2001</u>	<u>2002</u>	<u>2003</u>
Virginia	47.2	48.7	45.2	37.9	33.4	32.0	30.7	27.1
Albemarle	30.0	30.1	24.2	29.8	16.0	14.7	14.0	13.7

	<u>2004</u>	<u>2005</u>
Virginia	26.0	25.2
Albemarle	12.1	14.7

Source: Virginia Health Department, (<http://www.vdh.state.va.us/healthstats/stats.asp>), 10 July 2007.

Infant Mortality Rate Has Risen Substantially since 1995



Infant Deaths per 1,000 Live Births

The state's infant death rate has been relatively constant since 1995. Albemarle's rate, however, has exhibited an upward trend since 1995, although, since 1999, the rate typically has hovered around 6 per 1,000.

	<u>1995</u>	<u>1996</u>	<u>1997</u>	<u>1998</u>	<u>1999</u>	<u>2000</u>	<u>2001</u>	<u>2002</u>
Virginia	7.7	7.6	7.8	7.4	7.2	6.8	7.4	7.3
Albemarle	1.2	2.3	3.3	2.1	5.9	5.7	4.1	6.2

	<u>2003</u>	<u>2004</u>	<u>2005</u>
Virginia	7.6	7.4	7.4
Albemarle	5.9	2.1	5.7

Source: Virginia Health Department, (<http://www.vdh.state.va.us/healthstats/stats.asp>). 10 July 2007.