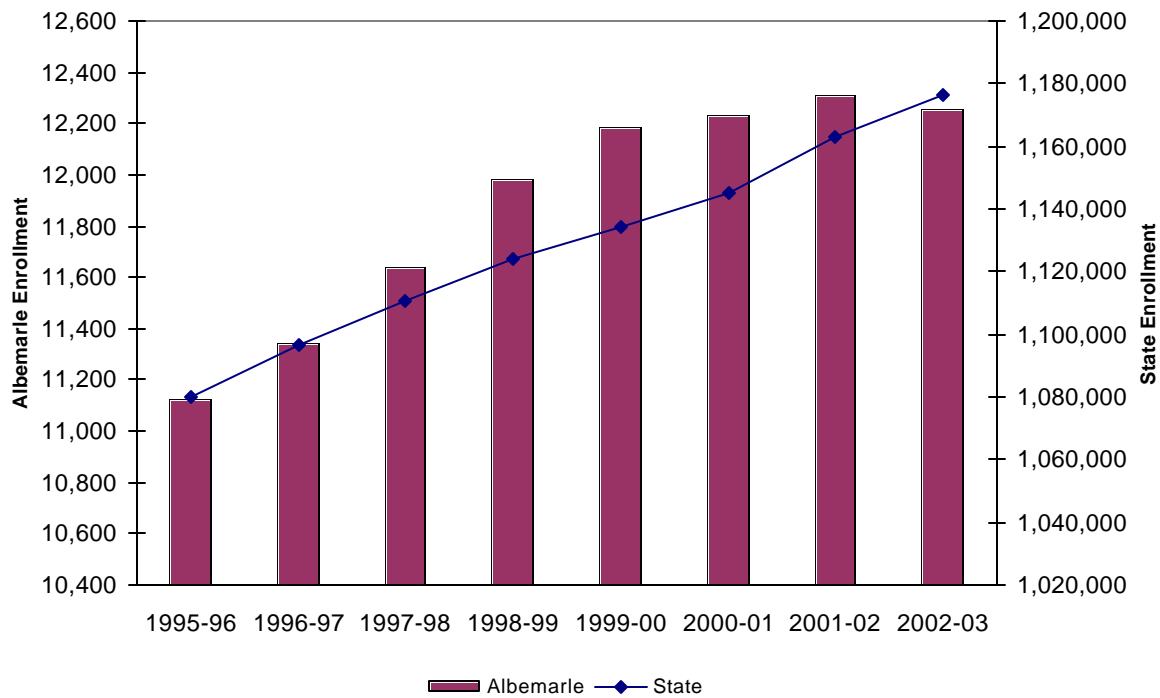


Strategic Direction 1:  
Educational Opportunities

**Education Profile**

### Albemarle school enrollment growth has slowed



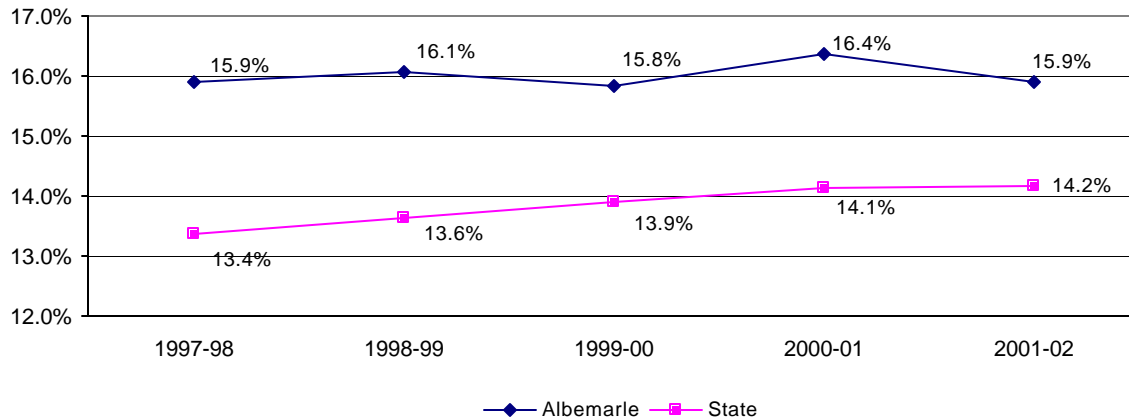
#### Public School Enrollment

For much of the 90s, school enrollment was growing at a rate above that of the state as a whole. However, since 2000, the rate of enrollment growth has slowed, with an actual decline in enrollment in 2002-03.

	September 30 Enrollments							
	1995-96	1996-97	1997-98	1998-99	1999-00	2000-01	2001-02	2002-03
<b>Albemarle</b>								
Students	11,123	11,344	11,644	11,981	12,187	12,237	12,315	12,253
Growth		2.0%	2.6%	2.9%	1.7%	0.4%	0.6%	-0.5%
<b>Virginia</b>								
Students	1,079,854	1,096,279	1,110,815	1,124,022	1,133,994	1,144,913	1,163,094	1,176,557
Growth		1.5%	1.3%	1.2%	0.9%	1.0%	1.6%	1.2%

Source: Virginia Department of Education

**Albemarle County's percentage of special education students is slightly higher than state average**



**Special Education Enrollment**

In the past 5 years, special education students have consistently made up roughly 16% of the total school population. This is slightly higher than the statewide rate of 14%.

**Special Education Enrollment**

	<u>1997-98</u>	<u>1998-99</u>	<u>1999-00</u>	<u>2000-01</u>	<u>2001-02</u>
Mental Retardation	122	123	119	140	137
Severe Disability	3	4	4	3	5
Hearing Impairments	8	7	5	9	10
Speech or Language Impairments	344	333	332	348	290
Visual Impairments	6	7	9	9	7
Emotional Disturbance	128	148	140	152	160
Orthopedic Impairments	6	4	6	3	5
Other Health Impairments	148	197	234	276	304
Autism	18	28	43	61	69
Specific Learning Disabilities	929	891	852	815	800
Multiple Disabilities	25	27	30	25	24
Developmental Delay	110	151	149	154	141
Traumatic Brain Injury	<u>5</u>	<u>5</u>	<u>6</u>	<u>7</u>	<u>6</u>
<b>TOTAL</b>	<b>1,852</b>	<b>1,925</b>	<b>1,929</b>	<b>2,002</b>	<b>1,958</b>

**% of all Students**

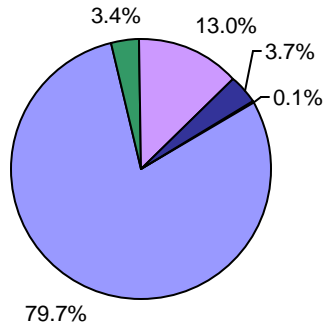
Albemarle	15.9%	16.1%	15.8%	16.4%	15.9%
State	13.4%	13.6%	13.9%	14.1%	14.2%

Source: Virginia Department of Education

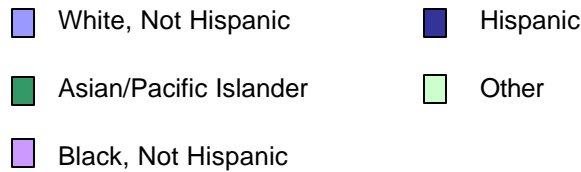
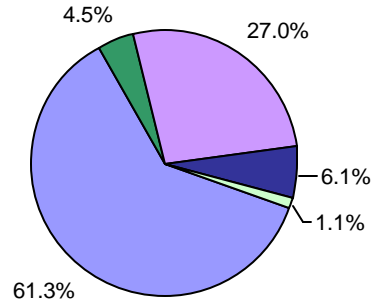
Methodology: % of LEP students is # of students receiving services as of September 30 divided by September 30 membership as reported by the Virginia DOE.

**The largest percentage of the student population is white**

**Albemarle County Schools Ethnic Distribution 2002-03**



**State of Virginia Schools Ethnic Distribution 2002-03**



Source: Virginia Department of Education

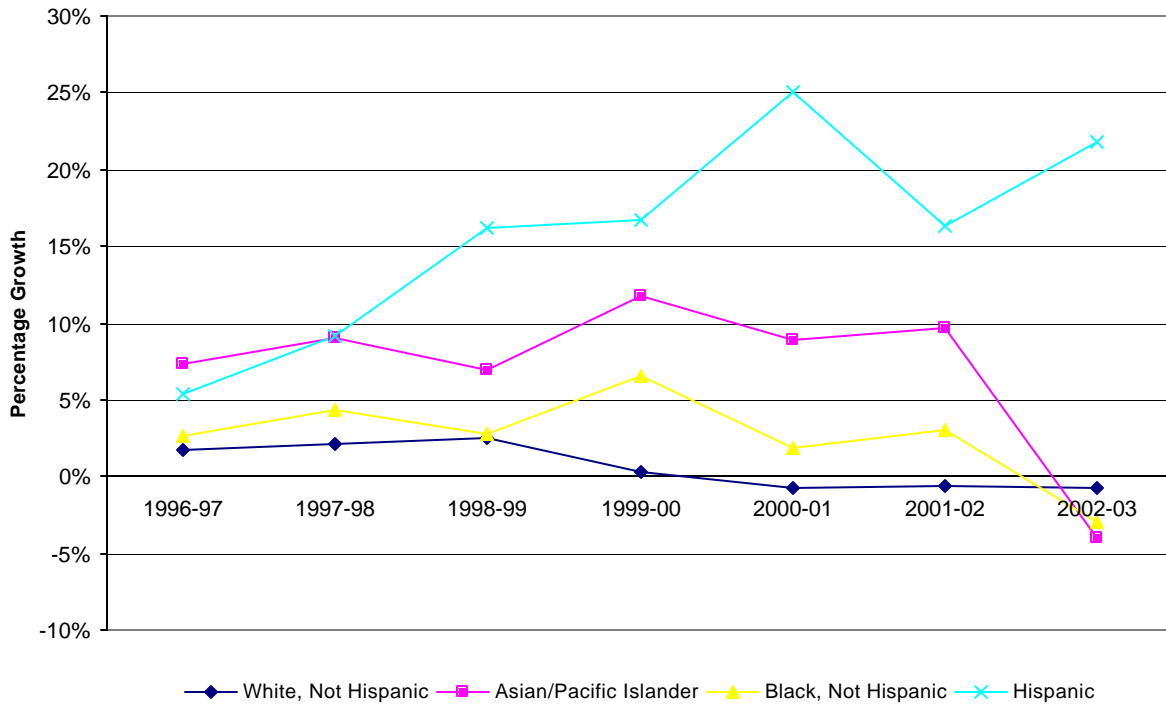
**Albemarle County Schools Ethnic Distribution**

In 2002-03, whites continue to make up the largest percentage of the student population at 80%. This is significantly higher than the statewide average of 61%. Non-Hispanic blacks continue to make up the second largest ethnic group, comprising 13% of all students (Table 2-3). Though they make up only 4% of all students in Albemarle County (a total of 459 students), Hispanic students are the fastest growing group, increasing 162% since 1996-97. In contrast, the population of white students has grown only 3% in that same time period (Table 2-4).

	Albemarle		Virginia	
	<u>Number</u>	<u>Percent</u>	<u>Number</u>	<u>Percent</u>
White, Not Hispanic	9,766	80%	721,366	61%
Asian/Pacific Islander	414	3%	52,925	4%
Black, Not Hispanic	1,599	13%	317,264	27%
Hispanic	459	4%	71,784	6%
Other	15	0%	13,218	1%
<b>Total</b>	<b>12,253</b>		<b>1,176,557</b>	

Source: Virginia Department of Education

**The fastest growing student sub-population is Hispanic**



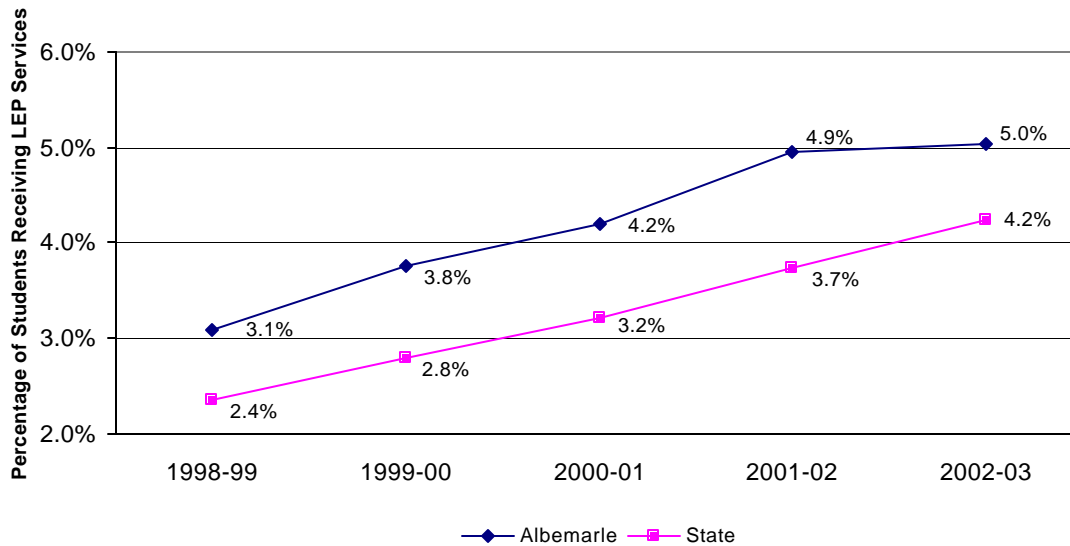
**Growth Rates by Ethnicity**

	<u>1996-97</u>	<u>1997-98</u>	<u>1998-99</u>	<u>1999-00</u>	<u>2000-01</u>	<u>2001-02</u>	<u>2002-03</u>
White, Not Hispanic	2%	2%	2%	0%	-1%	-1%	-1%
Asian/Pacific Islander	7%	9%	7%	12%	9%	10%	-4%
Black, Not Hispanic	3%	4%	3%	7%	2%	3%	-3%
Hispanic	5%	9%	16%	17%	25%	16%	22%
Other	0%	150%	120%	0%	45%	-6%	0%

**Number of Students by Ethnicity**

	<u>1996-97</u>	<u>1997-98</u>	<u>1998-99</u>	<u>1999-00</u>	<u>2000-01</u>	<u>2001-02</u>	<u>2002-03</u>
White, Not Hispanic	9,514	9,711	9,951	9,985	9,904	9,844	9,766
Asian/Pacific Islander	277	302	323	361	393	431	414
Black, Not Hispanic	1,376	1,435	1,474	1,571	1,600	1,648	1,599
Hispanic	175	191	222	259	324	377	459
Other	2	5	11	11	16	15	15

### Increasing demand for Limited English Proficient (LEP) services



#### Limited English Proficient (LEP) Services Provided

The state defines LEP students as those who were not born in the United States or whose native language is not English and whose difficulties in speaking, reading, writing, or understanding the English language may be sufficient enough to deny success in the classroom. The number of Albemarle County students receiving LEP services has been steadily rising during the past five years, reaching 618 students, or 5.0% of all students receiving services in 2002-03.

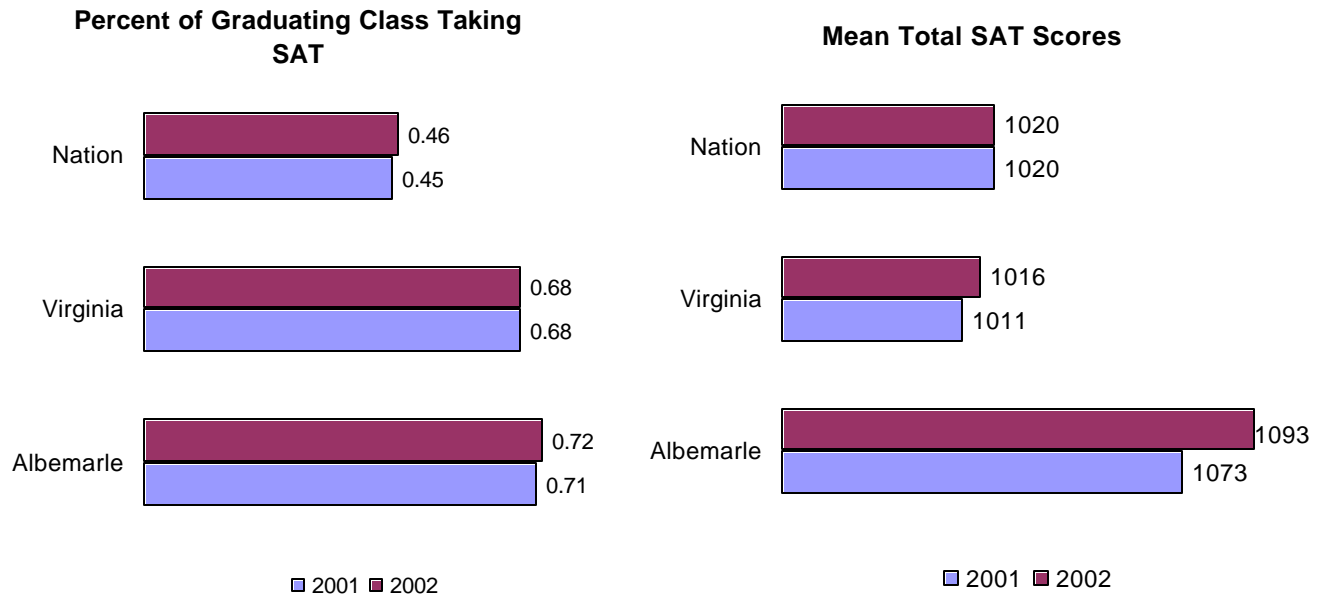
#### Limited English Proficient (LEP) Students Receiving Services

	<u>1998-99</u>	<u>1999-00</u>	<u>2000-01</u>	<u>2001-02</u>	<u>2002-03</u>
<b>Albemarle</b>					
# of Students	370	458	514	609	618
% of Students	3.1%	3.8%	4.2%	4.9%	5.0%
<b>Virginia</b>					
# of Students	26,525	31,787	36,799	43,535	49,840
% of Students	2.4%	2.8%	3.2%	3.7%	4.2%

Source: Virginia Department of Education

Methodology: % of LEP students is # of students receiving services as of September 30 divided by September 30 membership as reported by the Virginia DOE.

### Albemarle has a high rate of students taking the SATs and scoring above state and national averages



#### Scholastic Achievement Test (SAT) Data

The Scholastic Achievement Test (SAT) is an exam that is designed to measure verbal and mathematical skills students need to be successful academically. It is used by many colleges as an indicator of students' ability to succeed. Albemarle County students outperform students statewide and across the nation on the SAT. In 2002, Albemarle students scored a mean total SAT score of 1093 compared with 1016 and 1020 for the state and nation, respectively. This is especially remarkable since a high percentage of Albemarle students take the exam (72% of the graduating class in 2002) compared with 68% throughout Virginia and only 46% nationwide.

	% of Graduation Class taking SAT		Mean Total Score	
	<u>2001</u>	<u>2002</u>	<u>2001</u>	<u>2002</u>
Albemarle	71%	72%	1073	1093
Virginia	68%	68%	1011	1016
Nation	45%	46%	1020	1020

Source: Albemarle County Public Schools 2002 Annual Progress Report, Volume II

**Albemarle Students Receive National Merit Recognition**

Students are selected for National Merit recognition based on their scores on the Preliminary Scholastic Achievement Test (PSAT). To be commended, students must score in the top five percent statewide. Semifinalists must score in the top one half of one percent in their state. Finalists are then selected based on additional information about their high school record.

<b>National Merit Scholarships</b>					
	<u>1997-98</u>	<u>1998-99</u>	<u>1999-00</u>	<u>2000-01</u>	<u>2001-02</u>
Finalists	7	4	10	7	6
Semi-Finalist	7	4	11	2	1
Commended	26	20	42	26	42

Source: Albemarle County Public Schools 2002 Annual Progress Report, Volume II

**Advanced Placement**

The Advanced Placement (AP) Program allows students to take college-level coursework in high school. Based on receiving a "qualifying" grade on the AP exam, many colleges and universities will give students credit for the course. Albemarle County students have a higher participation rate and a higher achievement rate than students statewide.

<b>Advanced Placement</b>									
<b>Number and percentage of 9-12 grade students taking one or more AP course</b>					<b>Number and percentage of 9-12 grade students who scored 3 or higher on at least one AP exam</b>				
	<u>2000-2001</u>		<u>2001-2002</u>			<u>2000-2001</u>		<u>2001-2002</u>	
	<u>Number</u>	<u>Percent</u>	<u>Number</u>	<u>Percent</u>		<u>Number</u>	<u>Percent</u>	<u>Number</u>	<u>Percent</u>
Albemarle	483	13.9%	555	15.4%	Albemarle	300	62.1%	363	65.4%
State	31,405	9.4%	35,050	10.3%	State	16,156	51.4%	19,120	54.6%

Source: Albemarle County Public Schools 2002 Annual Progress Report, Volume II and Virginia Department of Education



**96% of Albemarle schools have met the state accreditation requirements**

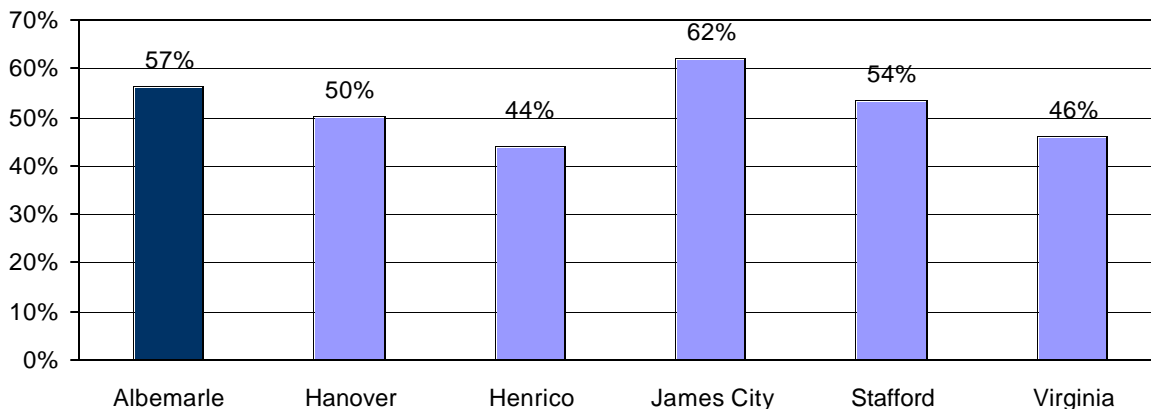
SOL Tests				
Percentage of students passing tests				
<b>Grade 3</b>				
	<u>1999</u>	<u>2002</u>	<u>Inc</u>	
English	65.6	76.4	10.8	
Math	68.8	82.1	13.3	
History	66.3	77.7	11.4	
Science	75.3	82.8	7.5	
<b>Grade 5</b>				
	<u>1999</u>	<u>2002</u>	<u>Inc</u>	
Reading	77.7	87.0	9.3	
Writing	85.7	89.5	3.8	
Math	56.0	78.1	22.1	
History	67.8	82.1	14.3	
Science	77.1	84.7	7.6	
Computers/Technology	89.1	92.4	3.3	
<b>Grade 8</b>				
	<u>1999</u>	<u>2002</u>	<u>Inc</u>	
Reading	73.9	77.3	3.4	
Writing	74.2	79.3	5.1	
Math	65.5	72.1	6.6	
History	51.8	83.9	32.1	
Science	81.3	87.5	6.2	
Computers/Technology	76.6	80.7	4.1	
<b>End-of-Course Tests</b>				
	<u>1999</u>	<u>2002</u>	<u>Inc</u>	
Reading/Literature	74.4	84.6	10.2	
Writing	78.3	84.7	6.4	
Algebra I	60.7	87.6	26.9	
Geometry	66.1	82.7	16.6	
Algebra II	54.5	67.2	12.7	
World History 1	73.5	92.8	19.3	
World History 2	33	93.4	60.4	
US History	40.2	66.1	25.9	
Earth Science	69.1	79.9	10.8	
Biology	83.1	90.7	7.6	
Chemistry	83.4	77.5	-5.9	

Source: Albemarle County Public Schools 2002 Annual Progress Report, Volume II

**Standards of Learning**

The Virginia Standards of Learning (SOL) were adopted in 1995 by the Board of Education to emphasize instruction in English, mathematics, science, and history and social studies. Implementation of the SOL Assessment Program began in 1998 to provide a measure for gauging how well Virginia students were meeting the standards. Currently, a school's performance on the SOL tests is a major determination in receiving accreditation in Virginia. In Albemarle County, 23 out of 24 schools (96%) have met the state accreditation requirements. This is a remarkable achievement, considering that only 70% of all schools in the state are accredited.

**57% of Albemarle County graduates earn Advanced Studies Diplomas**



**Advanced Studies Diploma**

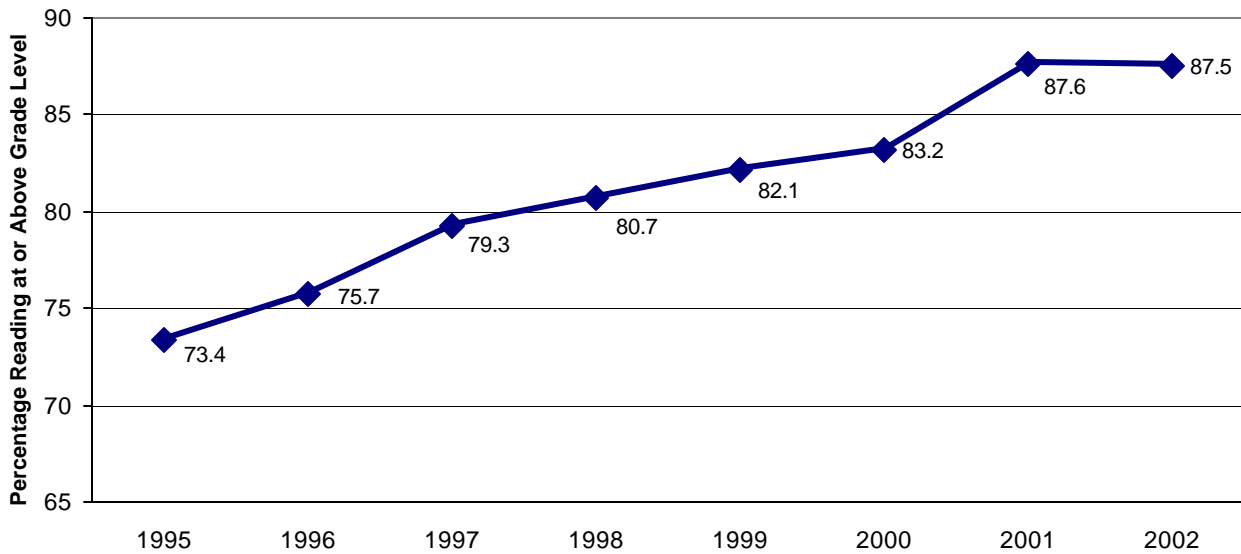
The Advanced Studies diploma requires students to successfully complete 23 credits including four in English; three each in math, laboratory science, and foreign language; two in physical education; one each in Virginia and U.S. history, Virginia and U.S. government, world studies, and fine or practical arts; and four electives. Starting in 2001-02, the requirements were changed to require 24 credits. 57% of Albemarle County graduates earn the advanced studies diploma, compared with only 46% statewide.

**Percentage of Graduates Awarded the Advanced Studies Diploma**

<b>Locality</b>	<b><u>1996-97</u></b>	<b><u>1997-98</u></b>	<b><u>1998-99</u></b>	<b><u>1999-00</u></b>	<b><u>2000-01</u></b>	<b><u>2001-02</u></b>
Albemarle	57%	59%	55%	59%	63%	57%
Hanover	58%	60%	65%	62%	58%	50%
Henrico	52%	52%	55%	53%	56%	44%
James City	58%	52%	57%	63%	63%	62%
Stafford	57%	55%	54%	57%	57%	54%
Virginia	50%	51%	51%	52%	53%	46%

Source: Virginia Department of Education

### Increasing literacy rates for 2nd Graders



#### Second Grade Literacy Rates

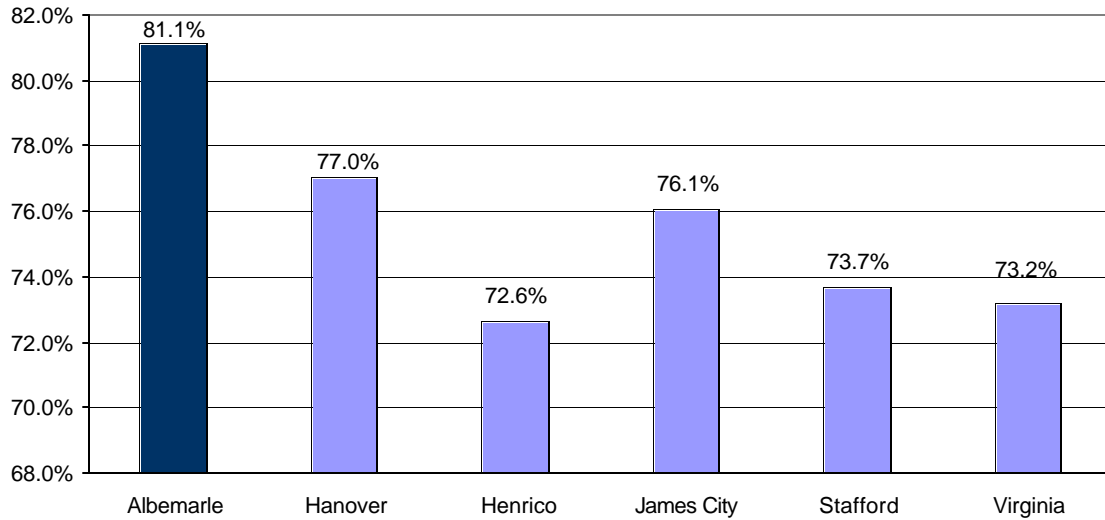
The Second-Grade Reading Assessment is a tool used to measure students' reading abilities early on and to identify those students requiring intervention. The percentage of second grade students reading at or above grade level has been rising consistently for the past several years.

#### Percentage of second-graders reading at or above grade level

<u>1995</u>	<u>1996</u>	<u>1997</u>	<u>1998</u>	<u>1999</u>	<u>2000</u>	<u>2001</u>	<u>2002</u>
73.4	75.7	79.3	80.7	82.1	83.2	87.6	87.5

Source: Albemarle County Public Schools 2002 Annual Progress Report, Volume II

**A greater percentage of Albemarle graduates pursue higher education than students statewide**



**Continuing Education Plans**

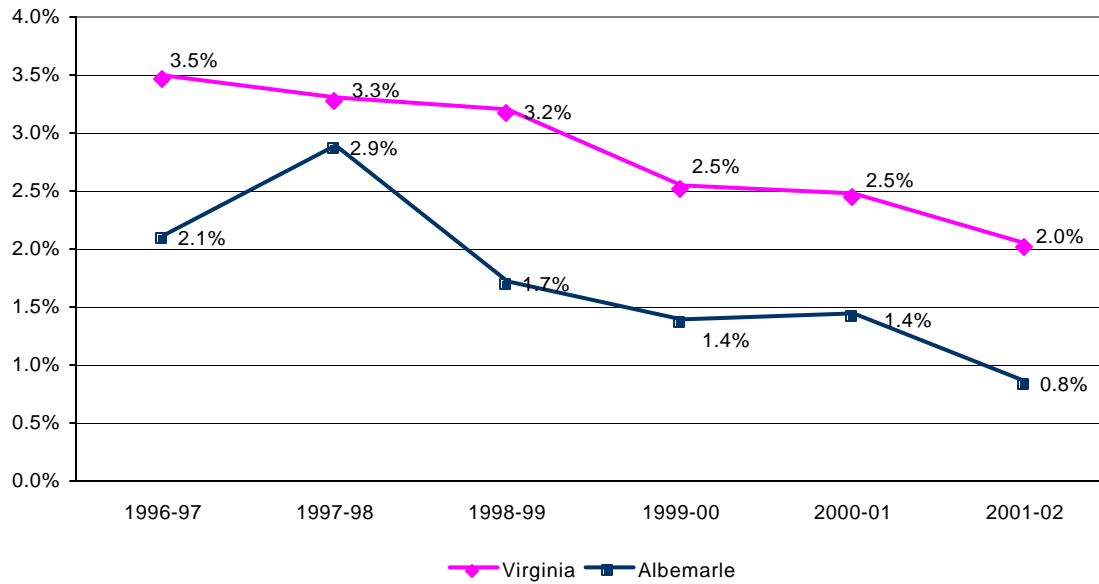
In Albemarle County, 81% of all 2002 graduates planned to continue their education by attending a 2-year college (23%) or a 4-year college (58%). Statewide, 73% of all 2002 graduates planned on attending a 2- or 4-year college (25% and 48%, respectively).

**Percent of Graduates Attending 2- or 4- Year Colleges**

	<u>1996-97</u>	<u>1997-98</u>	<u>1998-99</u>	<u>1999-00</u>	<u>2000-01</u>	<u>2001-02</u>
Albemarle	81%	80%	79%	80%	76%	81%
Hanover	76%	76%	81%	78%	84%	77%
Henrico	78%	79%	71%	77%	71%	73%
James City	80%	77%	83%	84%	78%	76%
Stafford	73%	72%	71%	72%	71%	74%
Virginia	72%	72%	73%	72%	73%	73%

Source: Virginia Department of Education

**Albemarle's dropout rate is below state's and has decreased**



**Dropout Rates**

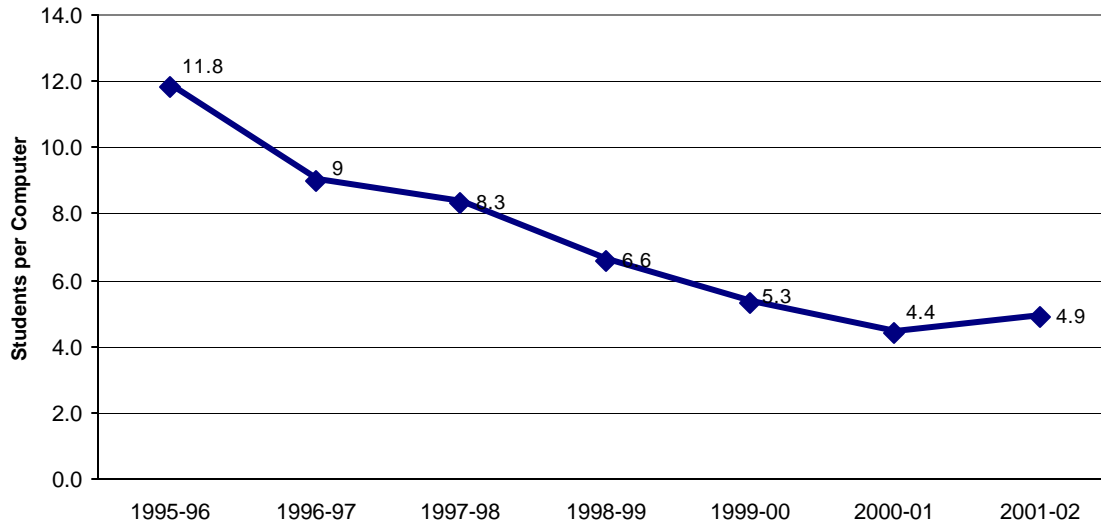
The dropout rate in Albemarle County has been decreasing each year since 1997-98. In 2001-02, only 0.83%, or 47 students, dropped out. This is one of the lowest dropout rates in the state, and is significantly lower than the state average of 2.02% in 2001-02.

**Dropout Rates**

	<u>1996-97</u>	<u>1997-98</u>	<u>1998-99</u>	<u>1999-00</u>	<u>2000-01</u>	<u>2001-02</u>
Virginia	3.47%	3.27%	3.18%	2.52%	2.46%	2.02%
Stafford	0.72%	2.00%	2.37%	1.36%	1.65%	1.68%
Henrico	3.43%	3.04%	2.37%	1.93%	1.84%	1.52%
James City County	2.67%	2.16%	1.74%	2.13%	0.98%	1.02%
Albemarle	2.08%	2.85%	1.68%	1.36%	1.41%	0.83%
Hanover	0.36%	0.33%	0.41%	0.30%	0.27%	0.45%

Source: Virginia Department of Education

**School computer availability has increased**



**Instructional Computers**

County students have good access to computers, with a countywide ratio of 4.9 students to every computer in 2001-02. Though this ratio has been reduced by more than 50% since 1995-96, it did experience a slight increase between 2000-01 and 2001-02.

**Number of Students to Every Computer**

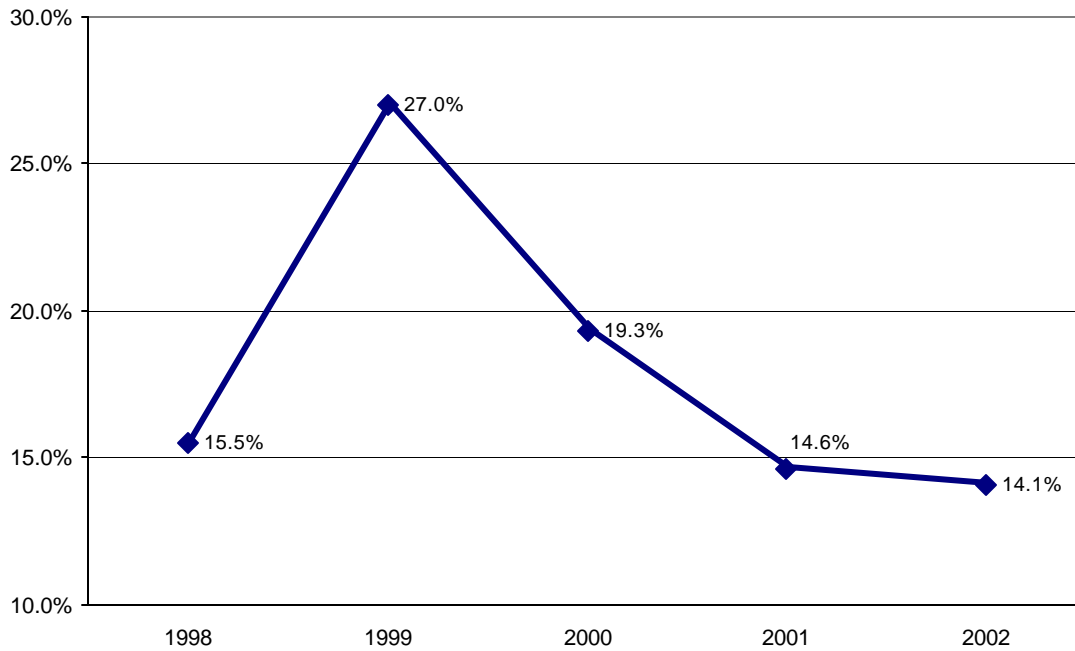
	<u>1995-96</u>	<u>1996-97</u>	<u>1997-98</u>	<u>1998-99</u>	<u>1999-00</u>	<u>2000-01</u>	<u>2001-02</u>
Elementary	11.8	9.4	8.9	8.6	6.3	5.3	5.8
Middle	10.0	8.2	6.8	5.7	5.2	4.0	7.4
High	13.9	9.0	8.7	5.2	4.3	3.7	3.3
County	11.8	9.0	8.3	6.6	5.3	4.4	4.9

**Number of Computers Per School Level**

	<u>1995-96</u>	<u>1996-97</u>	<u>1997-98</u>	<u>1998-99</u>	<u>1999-00</u>	<u>2000-01</u>	<u>2001-02</u>
Elementary	459	585	627	656	949	1,091	988
Middle	263	328	397	487	674	708	386
High	222	352	387	673	866	953	1,127
County	944	1,265	1,411	1,816	2,489	2,752	2,501

Source: Albemarle County Public Schools 2002 Annual Progress Report, Volume II

**Percentage of entering kindergarteners identified for intervention services has decreased**



**Phonological Awareness Literacy Screening (PALS)**

This Early Intervention Reading Initiative implemented by the state in 1997 is designed to reduce the number of children with reading problems. Kindergarten students take the PALS Reading Readiness test to identify those requiring intervention services. In 2002, 14.1% of Albemarle County kindergartener's were identified.

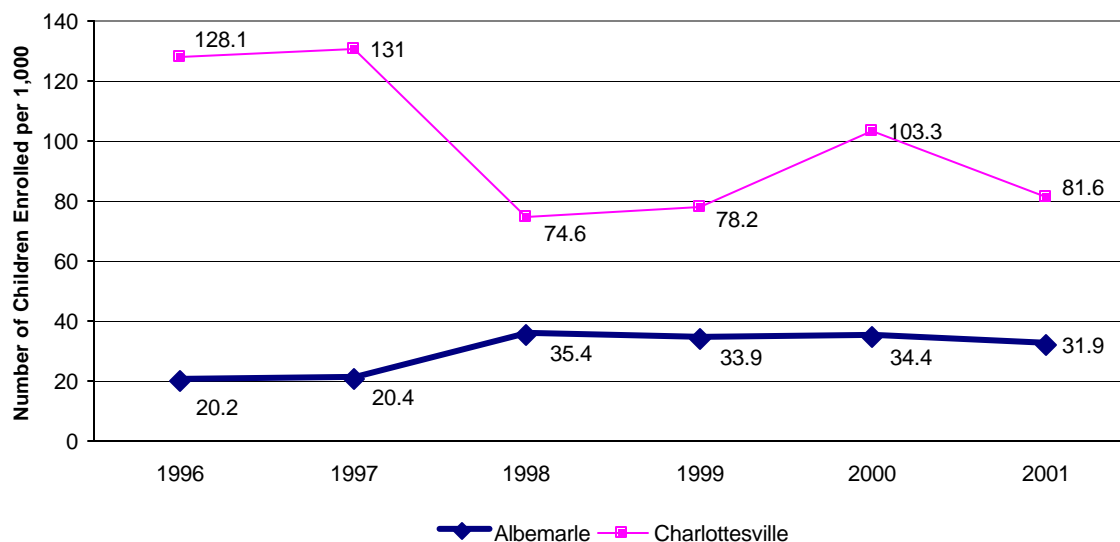
**Kindergarten Reading Readiness Participation**

% identified for intervention services

	<u>1998</u>	<u>1999</u>	<u>2000</u>	<u>2001</u>	<u>2002</u>
Albemarle	15.5%	27.0%	19.3%	14.6%	14.1%
Charlottesville	30.2%	37.0%	32.0%	30.4%	30.0%

Source: Charlottesville/Albemarle Commission on Children and Families, *Stepping Stones*, July 2002

**Rate of Head Start enrollment remains fairly constant**



**Head Start Enrollment**

Head Start is a federal program that provides pre-school to regional low-income families. The following table and graph show the number of children enrolled per 1,000 children, ages 3 and 4. Head start programs are currently at Yancey Elementary and Crozet Elementary. At third program will start at Baker-Butler Elementary in the fall of 2004.

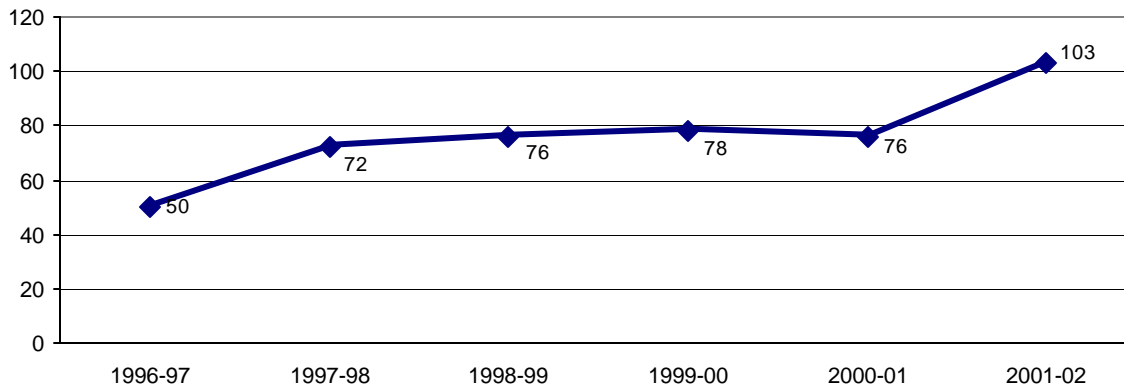
**Enrollment per 1,000 children, ages 3 and 4**

	<u>1996</u>	<u>1997</u>	<u>1998</u>	<u>1999</u>	<u>2000</u>	<u>2001</u>
Albemarle	20.2	20.4	35.4	33.9	34.4	31.9
Charlottesville	128.1	131	74.6	78.2	103.3	81.6

Source: Charlottesville/Albemarle Commission on Children and Families, *Stepping Stones*, July 2002



**Spike in number of GED diplomas awarded in 2002**



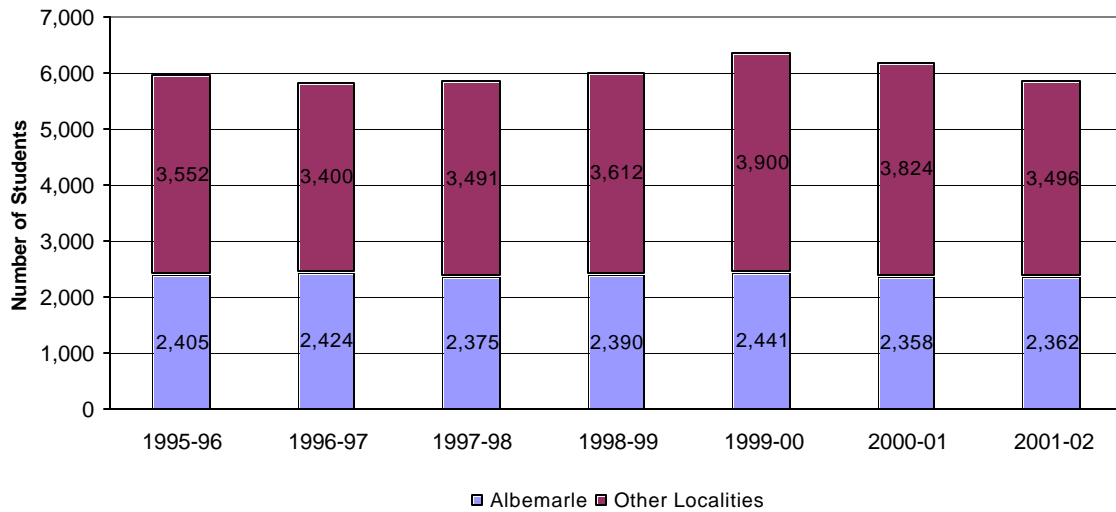
**General Education Diplomas**

The GED diploma program is available at no charge to any adult who has not yet completed high school. Studies include writing, social studies, science, literature, and math. In 2001-02, 103 Albemarle County residents successfully completed the requirements for a GED diploma.

	<u>1996-97</u>	<u>1997-98</u>	<u>1998-99</u>	<u>1999-00</u>	<u>2000-01</u>	<u>2001-02</u>
Residents Passing the GED	50	72	76	78	76	103

Source: Albemarle County Public Schools 2002 Annual Progress Report, Volume II

**40% of students enrolled at PVCC are Albemarle residents**



**Adult Education**

**Open Doors Program**

Each year, more than 2,700 adults participate in varied education opportunities offered through Open Doors, the adult and continuing education program. Classes cover over 100 subjects, including reading and writing skills, computer technology, art classes, driver education, motorcycle rider certification, and more.

**Piedmont Virginia Community College (PVCC)**

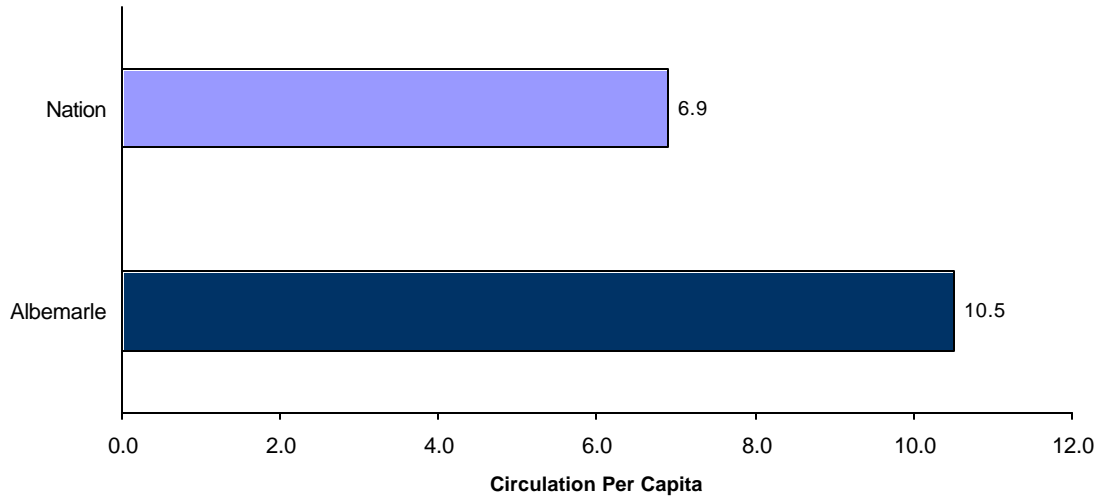
PVCC is a two-year, public college serving the counties of Albemarle, Fluvanna, Greene, Nelson, Louisa (partial), Buckingham (partial), and the City of Charlottesville. Nearly one-half of all residents in this service area who attend college in Virginia are enrolled at PVCC. In 2001-02, 40% of the students enrolled at PVCC were Albemarle County residents.

**PVCC Headcount Enrollment**

	<u>1995-96</u>	<u>1996-97</u>	<u>1997-98</u>	<u>1998-99</u>	<u>1999-00</u>	<u>2000-01</u>	<u>2001-02</u>
Albemarle	2,405	2,424	2,375	2,390	2,441	2,358	2,362
Other Localities	3,552	3,400	3,491	3,612	3,900	3,824	3,496
Total	5,957	5,824	5,866	6,002	6,341	6,182	5,858
Albemarle % of Total	40.4%	41.6%	40.5%	39.8%	38.5%	38.1%	40.3%

Source: Piedmont Virginia Community College

### Albemarle residents use libraries more than national average



#### Jefferson Madison Regional Library

Last year, the Regional Library circulated over 1.9 million items, or about 10.5 items per capita. The national average for libraries of comparable size is 6.9 items per capita. Library use at the Regional Library has increased by 31% since 1997. There are currently 106,553 active borrowers, meaning that 60% of residents have used their library cards within the past 3 years. Over 10,000 Albemarle County residents use the library's Internet computers per month.

Albemarle	10.5
Nation	6.9

Source: Jefferson-Madison Regional Library