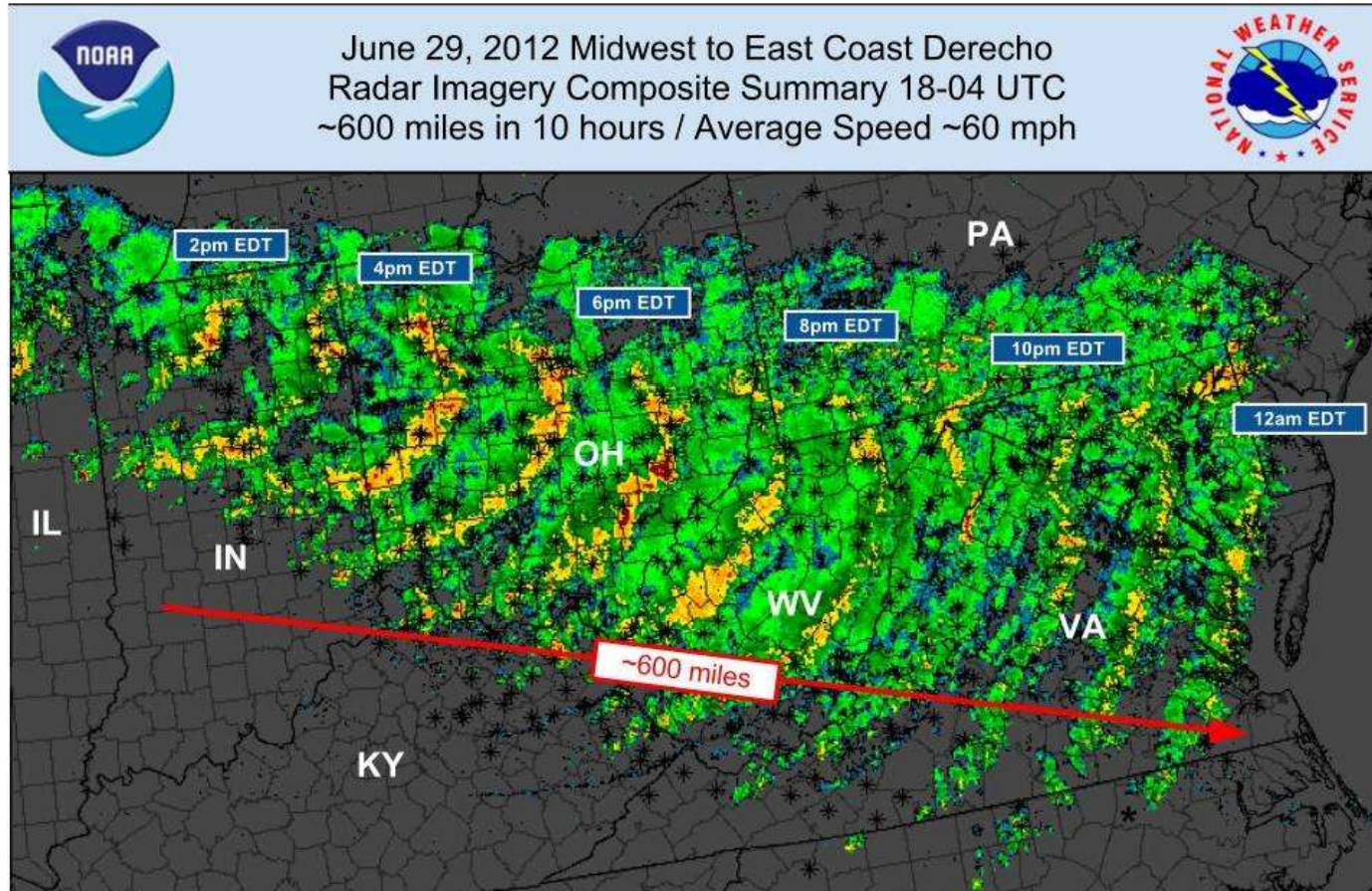


REGION'S EMERGENCY PREPAREDNESS AND RESPONSE TO THE DERECHO

Planning and Coordination Council – 16 August 2012

Derecho—A New Experience for Many



Over 800 preliminary thunderstorm wind reports indicated by *
Peak wind gusts 80-100mph. Millions w/o power.

Summary Map by G. Carbin
NWS/Storm Prediction Center

Regional Response

- ❑ Over 1,000 calls processed by the Emergency Communications Center between 9:00pm-12:00am.
- ❑ 384 calls for service created in the first three hours.
- ❑ By 1:00am first responders confirmed two fatalities.
- ❑ Roads blocked by downed trees and power lines.
- ❑ Extensive power outages.
- ❑ Local emergency declared and Emergency Operations Center opened at the ECC.

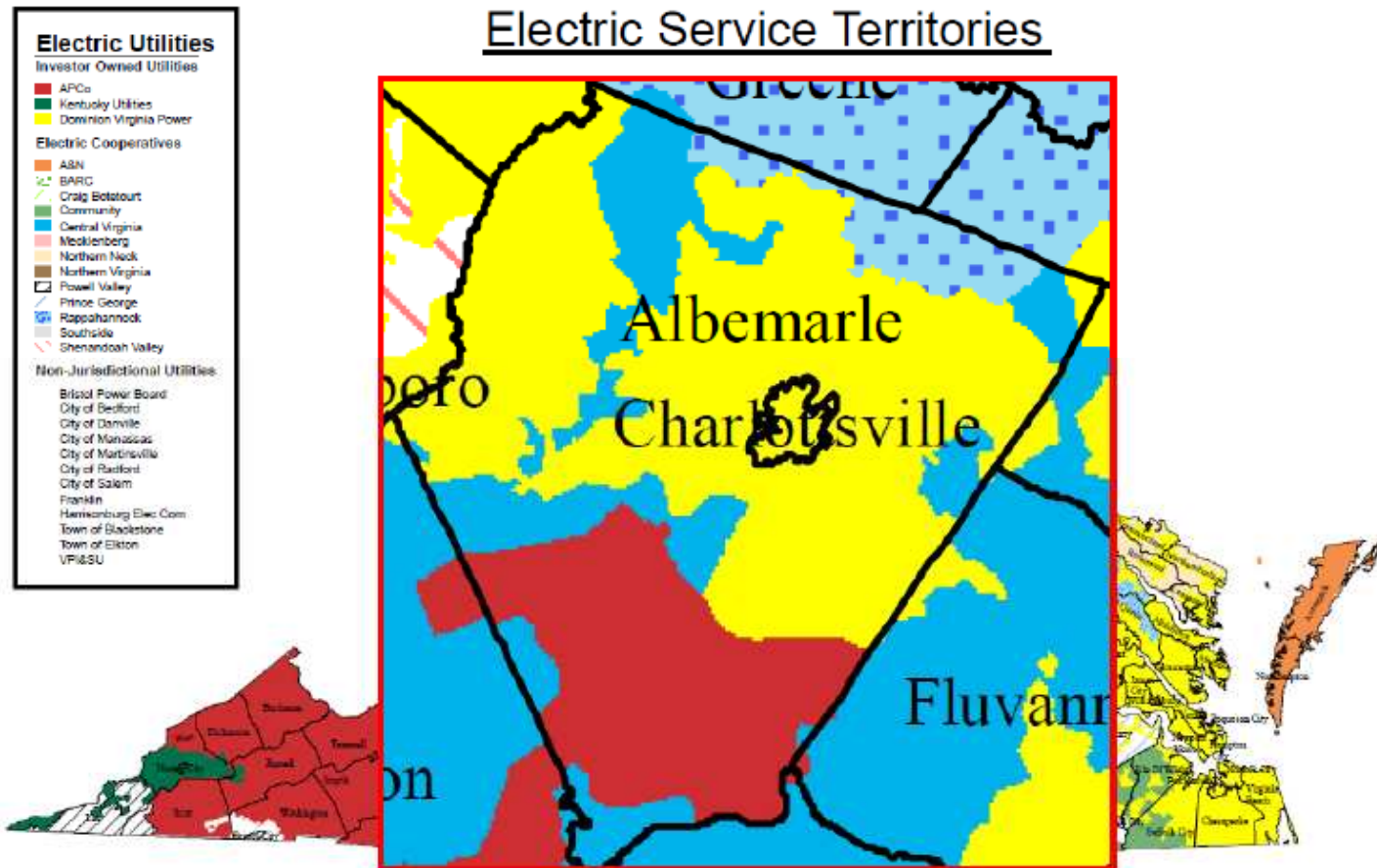


Complicating Factors



- ❑ No-notice event.
- ❑ Widespread power outages across multiple states.
- ❑ 100+ degree temperatures.
- ❑ End of the month.
- ❑ July 4th Holiday.
- ❑ Reliance on wells for water.

Power Landscape



Community Support



- Identified needs and responded with support
 - Overnight shelters
 - Water distribution
 - Cooling centers
 - Showers
 - Emergency food
 - Outreach to vulnerable populations
 - Debris removal

Federal Assistance



- City, County and the University received the federal disaster declaration.
- Requests for assistance have been submitted and approved for the City, County and University.
- FEMA kick-off meetings are underway.
- Reimbursement process – records are critical to receiving the funds.
- Still exploring agricultural losses; Agricultural Extension Agent is working to quantify loss.

Lessons Learned



- ❑ Communication to the public
- ❑ Volunteer management
- ❑ Facility readiness
- ❑ Preparedness education and outreach
- ❑ Logistics management
- ❑ Resource mapping
- ❑ Implement Incident Command System management structure

Questions?

Kirby Felts

Charlottesville-UVA-Albemarle

Emergency Management Coordinator

kfelts@albemarle.org

434-971-1263