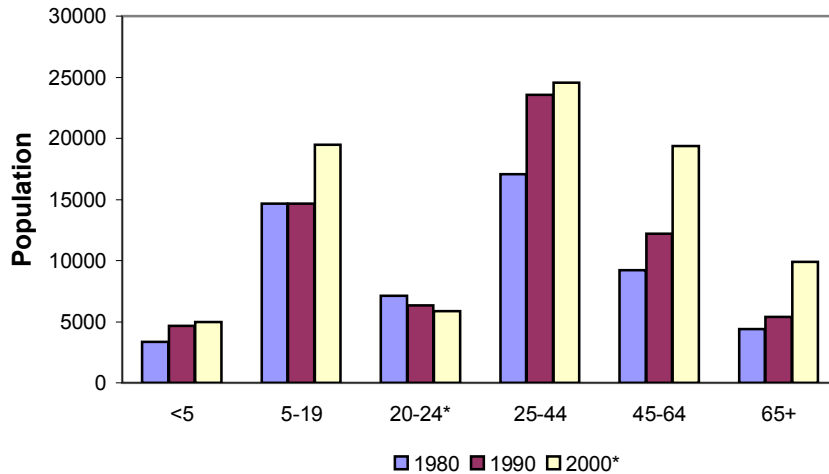


Albemarle's Population Is Aging



Population by Age Group

The population is aging with the elderly (65+) increasing by 4,517 (84%) and the experienced work force (45-64) increasing by 7,191 (59%) between 1990-2000. This aging is consistent with the national Baby Boomer trend. The percentage of the population older than 65 has increased from 8 to 12 percent of the total population while the 45-64 cohort has increased from 18 to 23 percent between 1990 and 2000.

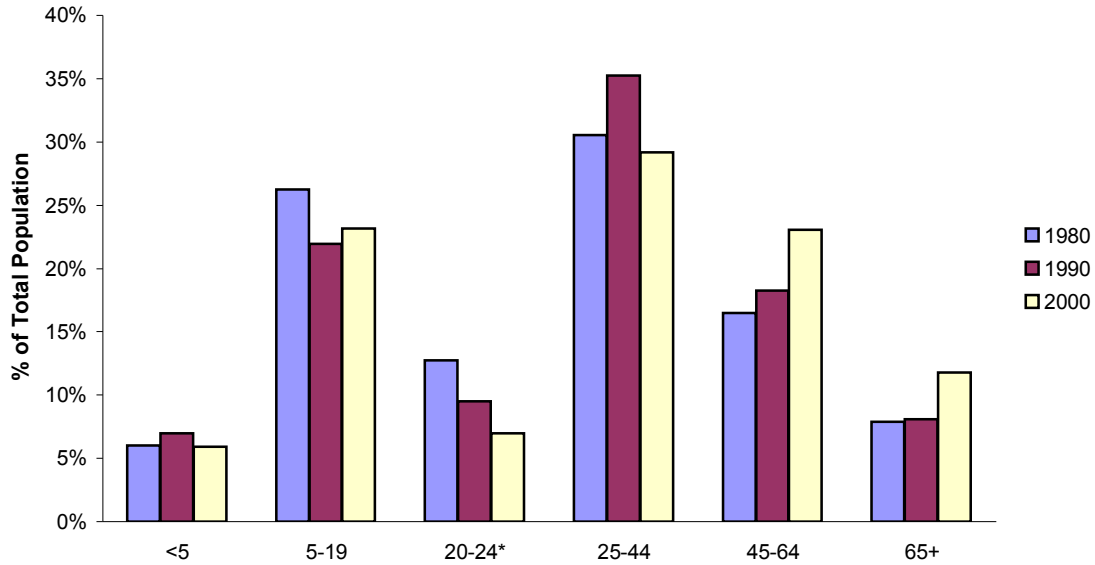
Population by Age Group, Projection

| | <u>1980</u> | <u>1990</u> | <u>2000*</u> | <u>% Change</u> | |
|--------|--------------|--------------|--------------|-----------------|----------------|
| | | | | <u>1980-90</u> | <u>1990-00</u> |
| <5 | 3,370 | 4,655 | 4,961 | 38% | 7% |
| 5-19 | 14,651 | 14,670 | 19,479 | 0% | 33% |
| 20-24* | 7,100 | 6,361 | 5,881 | -10% | -8% |
| 25-44 | 17,042 | 23,559 | 24,562 | 38% | 4% |
| 45-64 | 9,210 | 12,197 | 19,394 | 32% | 59% |
| 65+ | <u>4,410</u> | <u>5,403</u> | <u>9,920</u> | <u>23%</u> | <u>84%</u> |
| Total | 55,783 | 66,845 | 84,186 | 20% | 26% |

NOTE: The original 2000 Census contained an undercount that occurred in block groups comprising University housing. The figures here are revised estimates.

Source: US Census of Population, 2000.

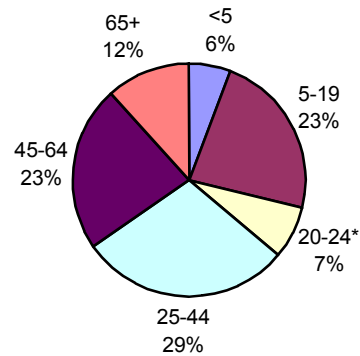
Twenty-nine Percent of Population Was Aged 25-44 in 2000



% of Total Population by Age

| | <u>1980</u> | <u>1990</u> | <u>2000</u> |
|--------|-------------|-------------|-------------|
| <5 | 6% | 7% | 6% |
| 5-19 | 26% | 22% | 23% |
| 20-24* | 13% | 10% | 7% |
| 25-44 | 31% | 35% | 29% |
| 45-64 | 17% | 18% | 23% |
| 65+ | 8% | 8% | 12% |

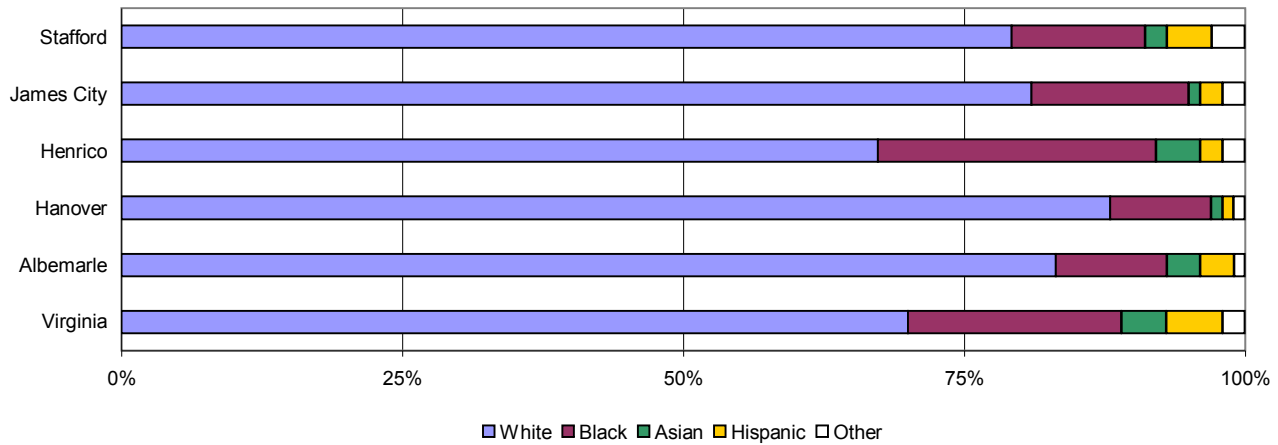
2000 Age Distribution



NOTE: The original 2000 Census contained an undercount that occurred in block groups comprising University housing. The figures here are revised estimates.

Source: US Census of Population, Table DP-1. June 2005.

Sixteen Percent of Albemarle County Is Non-White



Race and Ethnicity

Albemarle is largely a White community where only 17% of the population is non-White. Ten percent of the population is Black or African-American, with the remainder made up of Asian and Hispanic persons with 3% of the total population each. This distribution is congruent with the rest of the state. The large percentage of growth in the Hispanic population (138%) between 1990 and 2000 should be grounded in the knowledge that the population is such a small absolute magnitude, a slight increase will cause a large percentage change.

| | <u>Virginia</u> | <u>Albemarle</u> | <u>Hanover</u> | <u>Henrico</u> | <u>James City</u> | <u>Stafford</u> |
|----------|-----------------|------------------|----------------|----------------|-------------------|-----------------|
| White | 70% | 84% | 88% | 68% | 81% | 80% |
| Black | 19% | 10% | 9% | 25% | 14% | 12% |
| Asian | 4% | 3% | 1% | 4% | 1% | 2% |
| Hispanic | 5% | 3% | 1% | 2% | 2% | 4% |
| Other | 2% | 1% | 1% | 2% | 2% | 3% |

Population by Race/Ethnicity

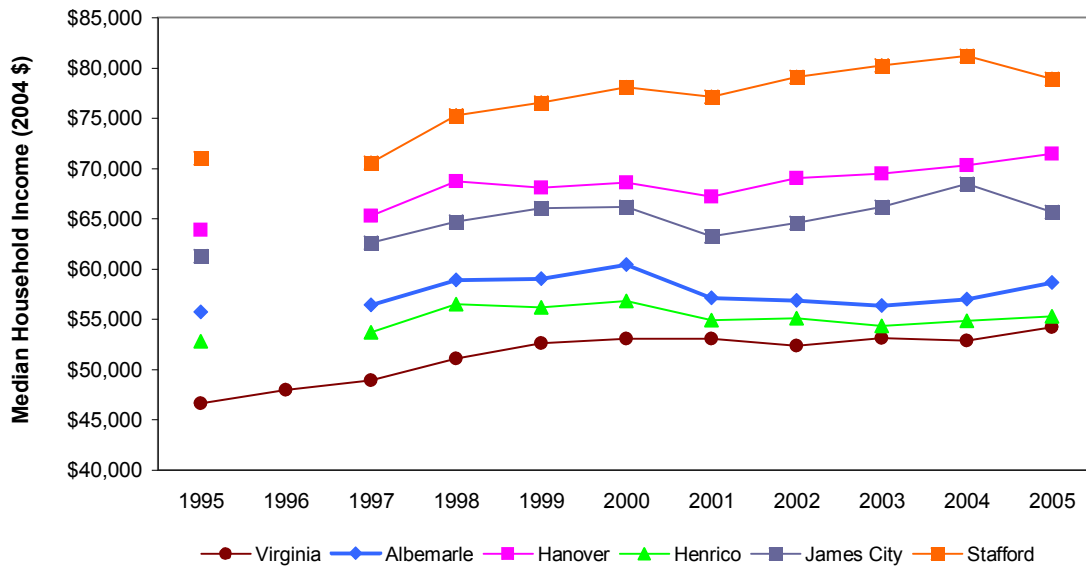
| | <u>1980</u> | | <u>1990</u> | | <u>2000</u> | | <u>% Change</u> | |
|----------|-------------|--------|-------------|--------|-------------|--------|-----------------|----------------|
| | | | | | | | <u>1980-90</u> | <u>1990-00</u> |
| White | 87% | 48,917 | 86% | 59,224 | 85% | 67,474 | 21% | 14% |
| Black | 11% | 6,183 | 10% | 6,855 | 10% | 7,650 | 11% | 12% |
| Asian | 1% | 504 | 2% | 1,656 | 3% | 2,268 | 229% | 37% |
| Hispanic | 1% | 419 | 1% | 867 | 3% | 2,601 | 107% | 138% |

Notes: White, Black or African American, and Asian categories are for the "Not Hispanic or Latino" population.

Hispanic or Latino represents a person of any race who indicated this ethnicity.

Source: U.S. Census, Table DP-1. June 2005.

Albemarle's Median Household Income Is below That of Three Peer Counties, But Above the State Level



Median Household Income -- Inflation Adjusted -- 2005 Dollars (1995-2005)

Albemarle has a low median household income level compared to three selected peer counties, and has had a relatively low average growth rate of 0.51%. This situation might be due in part to the large college age population associated with the University of Virginia.

| | <u>1995</u> | <u>1996</u> | <u>1997</u> | <u>1998</u> | <u>1999</u> | <u>2000</u> |
|------------|-------------|-------------|-------------|-------------|-------------|-------------|
| Virginia | \$46,604 | \$47,935 | \$48,927 | \$51,068 | \$52,574 | \$53,066 |
| Albemarle | \$55,713 | - | \$56,425 | \$58,915 | \$59,038 | \$60,408 |
| Hanover | \$63,843 | - | \$65,244 | \$68,735 | \$68,088 | \$68,600 |
| Henrico | \$52,825 | - | \$53,689 | \$56,499 | \$56,155 | \$56,807 |
| James City | \$61,244 | - | \$62,574 | \$64,673 | \$66,001 | \$66,168 |
| Stafford | \$71,015 | - | \$70,582 | \$75,289 | \$76,556 | \$78,051 |

| | <u>2001</u> | <u>2002</u> | <u>2003</u> | <u>2004</u> | <u>2005</u> | <u>AGR</u> |
|------------|-------------|-------------|-------------|-------------|-------------|------------|
| Virginia | \$53,076 | \$52,352 | \$53,100 | \$52,834 | \$54,207 | 1.52% |
| Albemarle | \$57,105 | \$56,848 | \$56,365 | \$56,985 | \$58,620 | 0.51% |
| Hanover | \$67,195 | \$69,020 | \$69,441 | \$70,282 | \$71,455 | 1.13% |
| Henrico | \$54,881 | \$55,074 | \$54,345 | \$54,805 | \$55,284 | 0.46% |
| James City | \$63,246 | \$64,575 | \$66,154 | \$68,422 | \$65,681 | 0.70% |
| Stafford | \$77,097 | \$79,074 | \$80,196 | \$81,158 | \$78,862 | 1.05% |

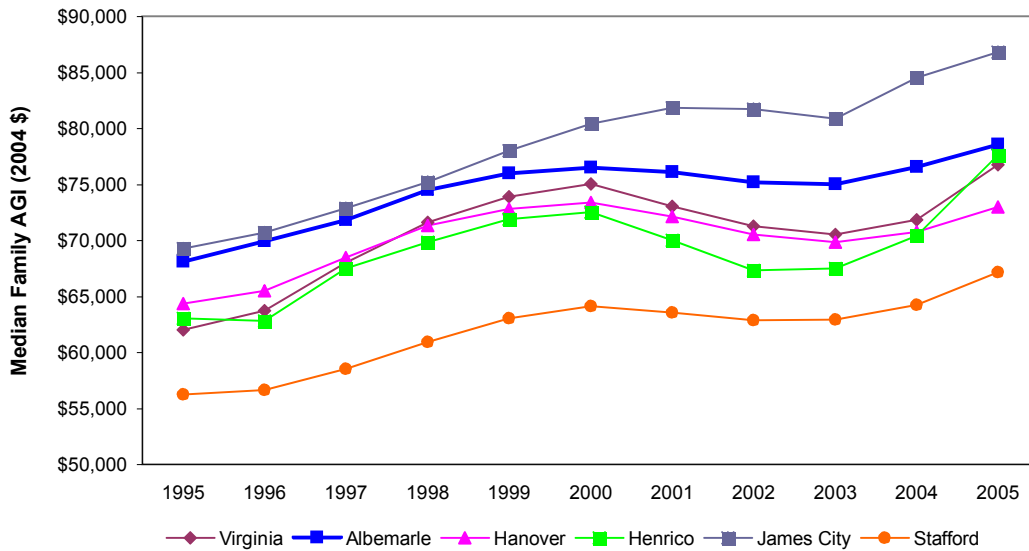
Note: Only state data was available for 1996.

(AGR) is the 10 yr. compounded average growth rate $(pr. yr/past yr)^{(1/t)-1}$.

Sources: US Census Bureau's "Small Area Income and Poverty Estimates" webpage (<http://www.census.gov/cgi-bin/saie/saie.cgi>), 30 August 2008

CPI: Bureau of Labor Statistics (<http://data.bls.gov/cgi-bin/cpicalc.pl>). 30 August 2008.

Albemarle's Median Family Income is the Second Highest among Selected Peer Counties and the State



Median Family Adjusted Gross Income -- Inflation Adjusted -- in 2005 Dollars

Except for the period 2001-03, Albemarle experienced growth in the inflation-adjusted median gross income (AGI) of married couples, which is a proxy for median family income. Albemarle's average growth rate in this variable came to 2.16% between 1995 and 2005, second only to James City County's growth rate of 2.28%. Note that the decrease in median family income for the years 2001-03 coincides, at least in part, with the national recession that took place during the early years of the current decade.

| | <u>1995</u> | <u>1996</u> | <u>1997</u> | <u>1998</u> | <u>1999</u> | <u>2000</u> |
|------------|-------------|-------------|-------------|-------------|-------------|-------------|
| Virginia | \$61,996 | \$63,710 | \$67,974 | \$71,588 | \$73,865 | \$75,052 |
| Albemarle | \$68,120 | \$69,923 | \$71,824 | \$74,498 | \$76,009 | \$76,537 |
| Hanover | \$64,332 | \$65,487 | \$68,466 | \$71,292 | \$72,778 | \$73,346 |
| Henrico | \$63,020 | \$62,808 | \$67,469 | \$69,820 | \$71,878 | \$72,523 |
| James City | \$69,285 | \$70,668 | \$72,863 | \$75,210 | \$78,019 | \$80,402 |
| Stafford | \$56,218 | \$56,613 | \$58,502 | \$60,925 | \$63,004 | \$64,113 |

| | <u>2001</u> | <u>2002</u> | <u>2003</u> | <u>2004</u> | <u>2005</u> | <u>AGR</u> |
|------------|-------------|-------------|-------------|-------------|-------------|------------|
| Virginia | \$73,047 | \$71,247 | \$70,537 | \$71,805 | \$76,740 | 2.16% |
| Albemarle | \$76,103 | \$75,173 | \$75,002 | \$76,599 | \$78,554 | 1.44% |
| Hanover | \$72,102 | \$70,489 | \$69,814 | \$70,740 | \$72,984 | 1.27% |
| Henrico | \$70,016 | \$67,306 | \$67,476 | \$70,424 | \$77,593 | 2.10% |
| James City | \$81,801 | \$81,734 | \$80,833 | \$84,522 | \$86,811 | 2.28% |
| Stafford | \$63,540 | \$62,882 | \$62,889 | \$64,213 | \$67,160 | 1.79% |

Methodology: "The median Adjusted Gross Income (AGI) of married couples is a good proxy for median family income even though the two income concepts differ."

AGR: 10 yr. compounded average growth rate (pr. yr/past yr)^(1/t)-1

Source: Weldon Cooper Center for Public Service's VASTAT website (<http://www.virginia.edu/coopercenter/vastat/income/income.html#AGI>).

CPI: Bureau of Labor Statistics (<http://data.bls.gov/cgi-bin/cpicalc.pl>), 25 May 2008.