

# Spring/Summer Activities

## 2008

### Spring - Special Events

KIDS ONLY TROUT FISHING DAY - SAT., MAY 3

HERSHEY TRACK MEET - SAT., MAY 17

### SUMMER PLAYGROUND PROGRAM

(REGISTRATION FOR SUMMER PLAYGROUND PROGRAM BEGINS MAY 13 AT 12:00NOON, MUST REGISTER IN THE ALBEMARLE COUNTY PARKS & RECREATION OFFICE)

QUICKSTART TENNIS

TENNIS LESSONS

SWIMMING LESSONS

BASKETBALL CAMP

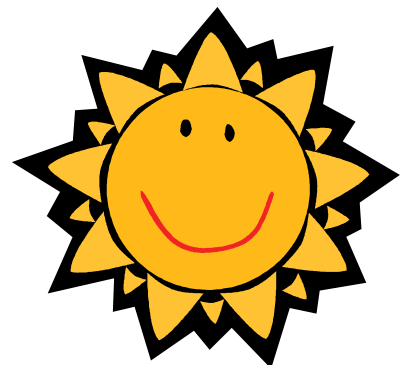
VOLLEYBALL CAMP

FAMILY SWIM PASSES



Active Living in  
Charlottesville and Albemarle

[www.LocalMotionHome.info](http://www.LocalMotionHome.info)



# Albemarle County Parks & Recreation

# Spring - Special Events - FREE

## Kid's Only Trout Fishing Day - Saturday, May 3, 2008

The 14<sup>th</sup> annual Kid's Fishing Day will be held at Mint Springs in Crozet, Virginia on Saturday, May 3<sup>rd</sup>, 2008 from 9:00am to 3:00pm. The event is sponsored by the Thomas Jefferson Chapter of Trout Unlimited, Kingfishers, the Virginia Department of Game and Inland Fisheries, and the Albemarle County Department of Parks and Recreation.

Fish will be stocked for the event in the two lakes at Mint Springs. Mint Springs Park is located just west of downtown Crozet on Route 684. All kids age 12 and under are invited. They may fish for free, and no license is required. Only one fishing rod per youngster is permitted. Trout Unlimited and Kingfisher volunteers will operate a concession stand. A raffle will be held for a fishing outfit. Some bait and tackle will be offered for sale.



## Hershey Track Meet - Saturday, May 17, 2008

Hershey Track Meet will be held on Saturday, May 17 at Monticello High School. Boys and girls divisions: ages 9-10, 11-12, and 13-14. Must turn 9 and not 15 on or before December 31, 2008. Registration starts at 9am and meet begins right after, approximately 10:15am. For more information call #(434) 296-5844.

### Hershey Track Meet Events:

50 meter run, 100 meter run, 200 meter run, 400 meter run, 800 meter run, 1600 meter run, 4 X 100 meter relay, softball throw and standing long jump. Events vary by age group. Participants may enter up to three events (two running and one field or two field and one running). Relay counts as a running event. **Winners will receive ribbons and advance to the district competition.**



# SUMMER PLAYGROUND PROGRAM 2008

(Ages 6-13)

The Albemarle County Parks and Recreation Department will be sponsoring the Summer Playground Program at 10 locations. This program is for children ages six to thirteen. **Child must turn six by November 30, 2008. No Exceptions.**

The program consists of organized recreational activities, sports, contests, arts & crafts, board games, and field trips. **Field trips may include: skating, bowling, and swimming.** Some of the program locations have different times and dates. The reason is some of the programs are run in coordination with summer school. Payment is due in cash or check made payable to Albemarle County at time of registration.



## Registration Dates & Location:

Please come to the County Office Building at 401 McIntire Road, Room 118, the Albemarle County Parks & Recreation Department

Tuesday, May 13 12:00pm – 6:00pm  
 Wednesday, May 14 12:00pm – 6:00pm  
 Thursday, May 15 12:00pm – 6:00pm



\*There will be a maximum number of enrollment for each site. Elementary school sites will be 100 and Crozet Park will be 60. Registration is on a first come first serve basis.

## Summer Playground Locations

**Cost is \$90** (Cost of program is a one time fee whether you attend one day or everyday and includes cost of field trips)

**All Sites will be closed on Friday, July 4**

LOCATIONS	DATES	TIME
Baker Butler Elementary	June 30 – July 25	12:30pm – 6:00pm
Broadus Wood Elementary	June 30 – July 25	12:30pm – 6:00pm
Crozet Park	July 7 – August 1	10:00am – 3:00pm
Murray Elementary	June 23 – July 18	12:30pm – 6:00pm
Red Hill Elementary	June 23 – July 18	1:00pm – 6:00pm
Scottsville Elementary	June 30 – July 25	12:30pm – 6:00pm
Stone Robinson Elementary	June 30 – July 25	12:00pm – 6:00pm
Stony Point Elementary	July 7 – August 1	12:00pm – 6:00pm
Woodbrook Elementary	July 1 – July 29	12:30pm – 6:00pm
Yancey Elementary	June 30 – July 25	12:30pm – 6:00pm

### Summer Playground Responsibilities

- Children may not be dropped off before the program time begins and must be pick-up at the program ending time.
- Transportation is the parent's responsibility to and from the program site.
- Parks & Recreation will provide transportation for field trips.
- Children need to bring lunch, snacks, and drinks each day.
- Staff can not administer or store any medication.
- Children enrolled must be able to handle their own toileting, dressing, and eating.
- Persons needing special assistance should call the Parks & Recreation Department at #296-5844. Reasonable accommodations will be made with 2 weeks notice.



"Albemarle County does not discriminate on the basis of race, creed, sex, national origin, age, military service or disability."

# QUICKSTART TENNIS PROGRAM

**QuickStart Tennis** is a new format to help kids 10 and under learn and play the game. To make it easier for the kids, a few things have changed -- court sizes, racquet sizes, balls, scoring system, even the net height. With the QuickStart format kids can concentrate on learning racquet skills and developing hand-eye coordination. Like other popular youth sports, QuickStart stresses the importance of play and team competition.

Now any child ages 5-10 can start playing tennis almost immediately -- even if he or she has never picked up a racquet.

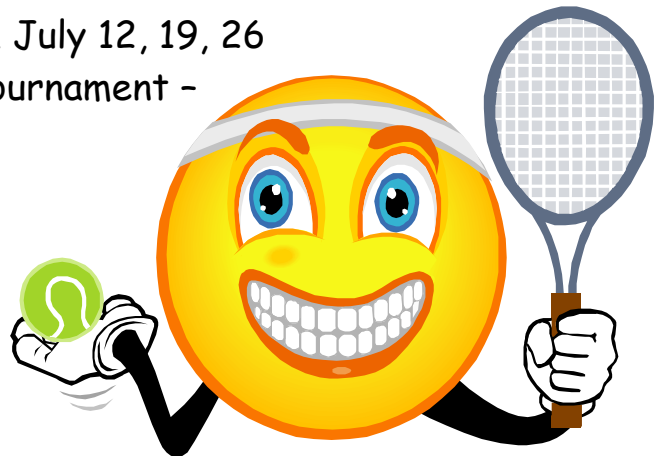
**Location:** Darden Towe Park

**Days:** Saturdays, June 14, 21, 28, July 12, 19, 26  
Then QuickStart Tennis Tournament -  
Saturday, August 2, 2008

**Time:** 9:00am to 10:30am

**Ages:** 5-10 years old

**Cost:** \$40



**\*Tennis Racquets and balls will be provided. Please bring a water bottle\***

Please visit our web site at [www.albemarle.org/parks](http://www.albemarle.org/parks)

# TENNIS LESSONS

Group Tennis Lessons taught by experienced local high school and college players. Learn the strokes, grips and information to get you started on a wonderful lifetime sport. Maximum class size 20 students. All participants will need a racquet, water bottle, and a can of new tennis balls.

**All Lessons are Monday - Thursdays. If needed, Rain Make-ups on Fridays.**

**Cost: \$40**



LOCATION	TIME	AGE GROUP
<b>Albemarle High School</b> Session 1: June 16 - 26	6:00 - 6:50pm	8 - 10 years old
	7:00 - 7:50PM	11 - 14 years old
Session 2: July 7 - 17	8:00 - 9:00pm	Adults (15 & up)

LOCATION	TIME	AGE GROUP
<b>Western Albemarle High School</b> Session 1: June 16 - 26	6:00 - 6:50pm	8 - 10 years old
	7:00 - 7:50PM	11 - 14 years old
Session 2: July 7 - 17	8:00 - 9:00pm	Adults (15 & up)



Please visit our web site at [www.albemarle.org/parks](http://www.albemarle.org/parks)

# SWIMMING LESSONS

Beginner swim lessons for ages 4 -12. Registration is first come, first serve, and classes fill-up quickly. Limit 10 children per class.

**Deadline for registration:**      **Session 1: June 11**  
   **Session 2: July 2**

**County Resident** (with a Season Pass \$32) (without a Season Pass \$42)  
**Non County Resident** (with a Season Pass \$42) (without a Season Pass \$52)

(All Lessons are Monday - Thursday) (If needed, Rain Make-ups on Fridays)

<b>Chris Greene Lake</b> Session 1: June 16 - June 26	9:00 - 9:40 a.m.	Beginner (ages 4-6 years old)
	9:00 - 9:40 a.m.	Beginner (ages 7-12 years old)
Session 2: July 7 - July 17	7:00 - 7:40 p.m.	Beginner (ages 4-6 years old)
	7:00 - 7:40 p.m.	Beginner (ages 7-12 years old)

<b>Mint Springs Valley</b> Session 1: June 16 - June 26	9:00 - 9:40 a.m.	Beginner (ages 4-6 years old)
	9:00 - 9:40 a.m.	Beginner (ages 7-12 years old)
Session 2: July 7 - July 17	7:00 - 7:40 p.m.	Beginner (ages 4-6 years old)
	7:00 - 7:40 p.m.	Beginner (ages 7-12 years old)

<b>Walnut Creek</b> Session 1: June 16 - June 26	9:00 - 9:40 a.m.	Beginner (ages 4-6 years old)
	9:00 - 9:40 a.m.	Beginner (ages 7-12 years old)
Session 2: July 7 - July 17	7:00 - 7:40 p.m.	Beginner (ages 4-6 years old)
	7:00 - 7:40 p.m.	Beginner (ages 7-12 years old)



Please visit our web site at [www.albemarle.org/parks](http://www.albemarle.org/parks)

# BASKETBALL CAMPS

## AT SCOTTSVILLE COMMUNITY CENTER

Fundamentals of basketball will be covered through stations, drills, and skills training. On Friday at each camp there will be a Hot Shot Contest. Open to Boys & Girls. Please bring lunch/snack and drinks to camp.

**Camp Director:** Brian Wilson, Coach of the Buckingham County High School Varsity Basketball Team. Team played in the 2007/2008 State Final Fours.

**Camp A:** Ages 6-9 June 23 - June 27, 2008  
12:00 - 5:00pm

**Camp B:** Ages 8-11 July 7 - July 11, 2008  
10:00am - 3:00pm

**Camp C:** Ages 10-13 July 14 - July 18, 2008  
10:00am - 3:00pm

**Camp D:** Ages 12-16 August 4 - August 8, 2008  
10:00am - 3:00pm

**Location:** Scottsville Community Center

**Cost:** \$40 for the week!



Please visit our web site at [www.albemarle.org/parks](http://www.albemarle.org/parks)

# VOLLEYBALL CAMP

**Volleyball Camp will be at Sutherland Middle School this summer for girls entering 7<sup>th</sup> grade thru 12<sup>th</sup> grade.** The daily focus will be on reaching each player's personal goals as well as improving endurance and skills to pass, set, hit and serve. Please bring water bottle and snack each day. Knee pads are highly suggested. Camp Director is Janet Hefren.

## **INTERMEDIATE VOLLEYBALL CAMP: JUNE 23-27 (MONDAY-FRIDAY) 9AM - 12NOON**

This camp is for girls entering the 7<sup>th</sup> through 9<sup>th</sup> grade, who have knowledge of volleyball rules and who have played competitively on a middle school team. Limit 40 participants. Register early, this camp fills up quickly!

**Cost: \$110, includes Camp T-Shirt.**

## **INTERMEDIATE VOLLEYBALL CAMP: JULY 7-11 (MONDAY-FRIDAY) 6:00 - 9:00PM**

This camp is for girls entering the 7<sup>th</sup> through 9<sup>th</sup> grade, who have knowledge of volleyball rules and who have played on a middle school team. Limit 40 participants. A perfect camp for those who may work during the day!

**Cost: \$110, includes Camp T-Shirt.**

## **ADVANCED VOLLEYBALL CAMP: JULY 21 - 25 (MONDAY-FRIDAY) 6:00 - 9:00PM**

This camp is for girls entering 9<sup>th</sup> grade thru 12<sup>th</sup> grade, who are trying out for the JV or Varsity teams and want to get ready for tryouts in August. This camp focuses on serious personal conditioning and fine-tuning skills in preparation for high school tryouts. Limit 40 participants. **Cost: \$110, includes Camp T-Shirt.**



**Sign-up Early!!**  
This Camp is in its 4<sup>th</sup>  
successful year!

Please visit our web site at [www.albemarle.org/parks](http://www.albemarle.org/parks)





The Albemarle County Parks and Recreation Department currently supervises and maintains over 2200 acres of public park land including 7 larger parks ranging in size from 113 to 525 acres. In addition the Department maintains 38 athletic fields, including 27 high level maintenance fields, 6 river access sites, several greenway segments and operates and maintains 3 Community Centers.

We currently have 28.5 miles of trails, we encourage you to take a walk and check them out! Please visit our website for trail maps and additional park information. [www.albemarle.org/parks](http://www.albemarle.org/parks)

## SEASON PASSES 2008

To Chris Greene Lake, Walnut Creek Lake, & Mint Springs for the SUMMER

Passes may be purchased at the cashier booth at each lake when open or at the Albemarle County Parks & Recreation Office. Cash & Checks only. Lakes Open Sat., May 24 - 26. Then CLOSED while Albemarle County Schools are in session and open just on weekends until they let out for summer break.

Swimming Times 10:00am to 8:00pm

	Alb. County Resident	Non-County Resident
Child(ages 4-12)	\$ 30.00	\$ 45.00
Adult(13+)	\$ 50.00	\$ 75.00
Family	\$100.00/5 limit (+\$20 each over 5)	\$150.00/5 limit (+\$30 each over 5)

**Seniors Free - Age 62 & over - Albemarle County Residents Only**

**Scholarships:** Discounted Family Swim Passes and Summer Playground Program thru Social Services.

"The Albemarle County Public Schools neither endorses nor sponsors the organization or activity represented in this material. The distribution or display of this material is provided as a community service and is not printed at taxpayers' expense."

Please visit our web site at [www.albemarle.org/parks](http://www.albemarle.org/parks)

# ACPR Registration Form

*(THIS FORM IS NOT FOR THE SUMMER PLAYGROUND PROGRAM, YOU MUST REGISTER IN PERSON FOR THE SUMMER PLAYGROUND PROGRAM)*

Questions call Albemarle County Parks and Recreation #(434) 296-5844

Make checks payable to:  
Albemarle County

Mail registration form and payment to:  
Albemarle County Parks and Recreation  
401 McIntire Road  
Charlottesville, VA 22902

(Please Print all Information)

Parent's Name		Email		
Address		City	State	Zip Code
Home Phone	Work Phone		Mobile Phone	

Participants Name	Circle Sports Camp or Lessons	Age	Location	Start Date	Session #	Start Time	Fee
	QuickStart Tennis Tennis Lessons Swimming Lessons Basketball Camp Volleyball Camp						
	QuickStart Tennis Tennis Lessons Swimming Lessons Basketball Camp Volleyball Camp						
	QuickStart Tennis Tennis Lessons Swimming Lessons Basketball Camp Volleyball Camp						

**Liability Release: Albemarle County Parks and Recreation**

I, hereby for myself, my heirs, executors and administrators, waive and release any and all rights and claims or damages I may accrue against Albemarle County, its officers, agents or assigns for any and all injuries suffered by me at this event or while traveling to or from this event. "Albemarle County does not discriminate on the basis of race, creed, sex, national origin, age, military service or disability. Reasonable accommodations will be provided to persons with disabilities, if requested"

\_\_\_\_\_  
Participant Signature (Parent if participant is under 18 years old)

\_\_\_\_\_  
Date

FOR VOLLEYBALL CAMPS ONLY CIRCLE T-SHIRT SIZE:      Adult Sizes:   Small      Medium      Large      XL      2XL