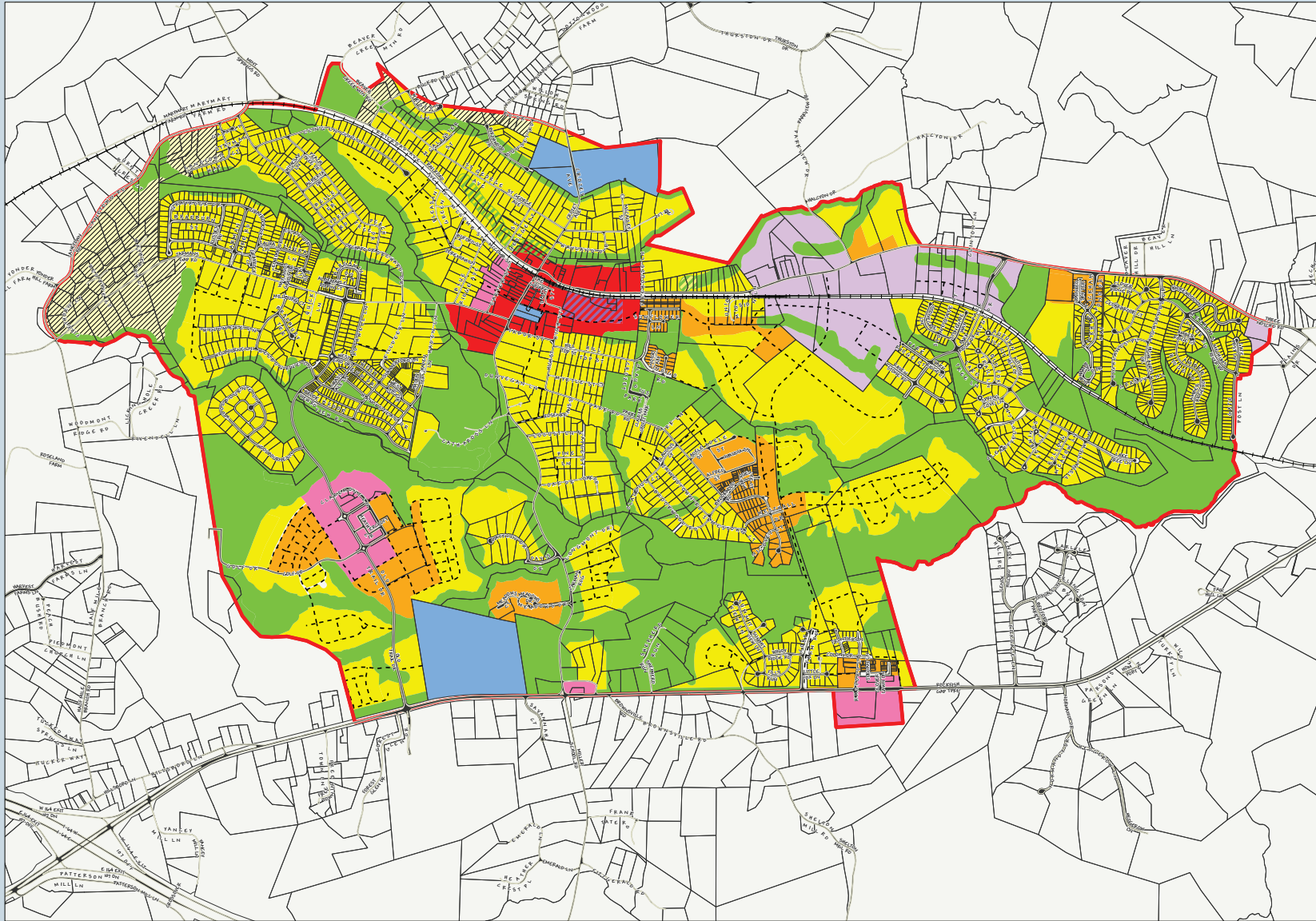








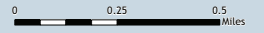
# Crozet Master Plan Land Use Plan

Prepared by Albemarle County | Office of Geographic Data Services(GDS).  
Map created by Derek Bedarf, September 16, 2010.



-  Railroad
-  Crozet Development Area
-  Parcels
-  Greenspace \*
-  Neighborhood Density Residential (Low)
-  Neighborhood Density Residential
-  Urban Density Residential
-  Mixed-Use
-  Downtown
-  Institutional
-  Light Industrial
-  See Crozet Master Plan Text
-  Potential Roads/Connections
-  Potential Stream Buffer Reduction \*\*

\* Refer to Parks & Green Systems Map  
\*\* Refer to Text



Note: The map elements depicted are graphic representations and are not to be construed or used as a legal description. This map is for display purposes only.