



**ANNUAL ANALYSIS
2005 - 2006**



November 2006

We are pleased to present you with our 2006 Annual Analysis for the Charlottesville/Albemarle Partnership for Children.

The Partnership for Children is a collaboration of fifteen public and private agencies focused on building a supportive community where children are nurtured in healthy families and arrive at school ready to learn. Representatives from each of our agencies meet on a monthly basis to plan and monitor the early childhood services we provide. We have developed a comprehensive early childhood strategy for reaching our goal that young children will be physically healthy, emotionally healthy, ready to learn, raised in nurturing families and provided basic living needs. The Partnership for Children has also been working steadily to develop a data collection system to help us evaluate our progress toward this goal.

Our Annual Analysis, which follows, reflects the data collection and initial analyses of the Partnership while serving the needs of their clients for 2005–2006. We are aware that many children in our community are not served by our programs. We face an ongoing challenge to continue to explore ways to compare the success of our programs with community benchmarks of children not enrolled in our services. The Partnership is committed to continuing to improve service provision and outcomes through continuous improvement of data collection and analysis.

Please feel free to contact us at (434) 220-KIDS for additional information or to schedule a presentation about our collaboration.

Sincerely,

Jon Nafziger
Vice President for Community Initiatives
United Way-Thomas Jefferson Area
Chair, Partnership for Children

Lisa Godwin
Coordinator
Partnership for Children

116 West Jefferson Street Charlottesville, Virginia 22902 Tel: (434) 220-KIDS Fax: (434) 295-2638

Partner Agencies Serving Charlottesville/Albemarle:

Albemarle County Department of Social Service
Albemarle County Public School
Arc of the Piedmont
Charlottesville Department of Social Services

Charlottesville City Schools
Charlottesville Redevelopment and Housing Authority
Children, Youth & Family Services, Inc.
C/A Commission on Children and Families

FOCUS Women's Resource Center
Jefferson Area CHIP
Monticello Area Community Action Agency

Region Ten Community Services Board
Thomas Jefferson Health Department
United Way- Success by 6
Virginia Cooperative Extension



OUR COMMON PURPOSE

The Partnership for Children is a collaboration of agencies whose goal is that every young child in the Charlottesville/Albemarle area will be developmentally healthy, raised in a nurturing family, have her basic needs met and begin school ready to learn. A single entity could not achieve this goal alone; therefore, we are a united group of fifteen agencies that serve young children, creating purposeful, well-coordinated efforts that provide direct services in a networked, effective, seamless, and family-friendly service system. We achieve these goals through monthly meetings that provide a consistent forum for collaboration, reflection, accountability, peer review and information sharing.

The Partnership is unique because we are a support service to agencies that provide direct services. It is essential that each Partner have an opportunity with peers for self-examination and improvement to further enhance its programs. We also meet in smaller work groups to develop new community approaches to address our goals. Our Early Childhood Strategy outlines our coordinated and enriching services for each stage of a young child's life.



EARLY CHILDHOOD STRATEGY

“Now I finally understand what you really do!” is a common response when people see our Early Childhood Strategy for the first time. The details of this strategy are the quintessential representation of our movement from cooperation through coordination to collaboration. The top portion of the document begins with our four goals and the indicators that monitor our success in meeting those goals. These include eleven agency indicators under the goal of *Developmentally Healthy*, three indicators under *Ready to Learn*, five indicators under *Raised in Nurturing Families*, and four indicators under *Provided Basic Living Needs*. Each of the items represents a common indicator on which the partners collect data.

All of the Partner Agencies provide valuable direct and support services. Some of the direct service programs of our Partner Agencies are labeled with the target age group and the type of service provided. The agencies listed underneath, such as the Departments of Social Services or the Health District; provide additional services to a broader range of age groups. This document represents our united efforts and reliance on one another. Each link in this collaborative system must be strong and effective in order to achieve our goal. This goal can only be reached when we honestly discuss areas that need improvement and seek best practices together. This requires that each Partner be willing to pursue self-evaluation and relinquish a level of autonomy. In the past year, the data collection process has been the impetus for many of these discussions of best practices.



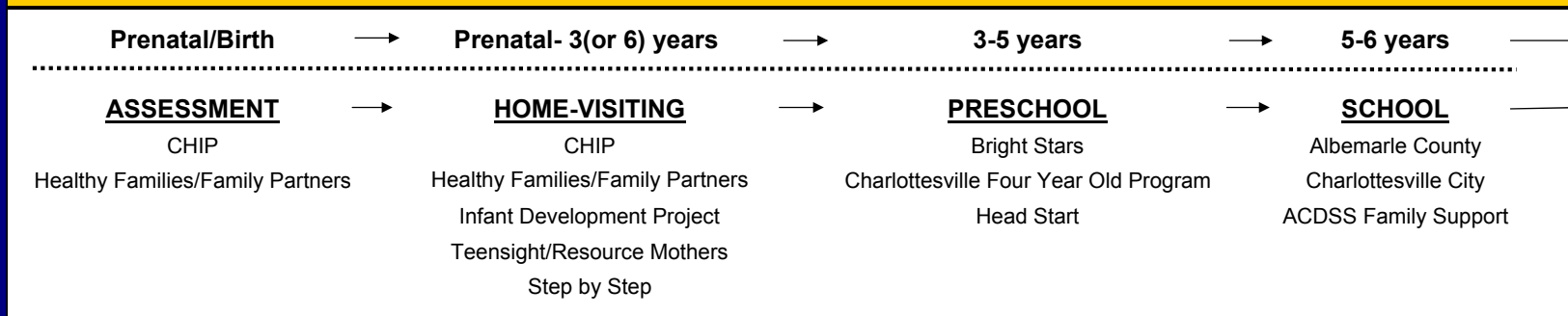


EARLY CHILDHOOD STRATEGY (0-6 YEARS)

OUR GOAL IS THAT ALL YOUNG CHILDREN WILL BE:

Developmentally Healthy	<ol style="list-style-type: none"> 1) Consistent and appropriate prenatal care 2) Access to appropriate and affordable physical health and dental care 3) Up-to-date and on-time immunizations 4) Consistent and up-to-date well-child check-ups 5) Periodic developmental screenings 6) Developmentally on target for Physical Milestones 	<ol style="list-style-type: none"> 7) Developmentally on target for Social-Emotional Milestones 8) Developmentally on target for Cognitive Milestones 9) Early intervention when developmental problems are identified 10) Access to appropriate and good nutrition 11) Opportunities for recreation and physical activity
Ready to Learn	<ol style="list-style-type: none"> 1) Experiences promoting early literacy and learning 2) Affordable and quality child care 	<ol style="list-style-type: none"> 3) Opportunities to participate in a structured pre-school program
Raised in Nurturing Families	<ol style="list-style-type: none"> 1) Healthy parent-child interaction & attachment with both parents 2) Effective and non-physical discipline 3) Developmentally-appropriate expectations and structure 	<ol style="list-style-type: none"> 4) Effective communication 5) Attentive to child's needs
Provided Basic Living Needs	<ol style="list-style-type: none"> 1) Safe, affordable, and stable housing 2) Regular and appropriate meals 	<ol style="list-style-type: none"> 3) Sufficient family income to meet child and family needs 4) Culturally relevant and appropriate services

WE ACCOMPLISH THIS GOAL THROUGH A SYSTEM OF DIRECT EARLY CHILDHOOD SERVICES PROVIDED BY THESE PARTNER AGENCIES:



AND THROUGH ADDITIONAL SERVICES & SUPPORT PROVIDED BY PARTNER AGENCIES:

United Way - Thomas Jefferson Area Success By 6	Thomas Jefferson Health District	Children, Youth & Family Services, Inc.	Charlottesville/Albemarle Commission on Children and Families	Monticello Area Community Action Agency (MACAA)	→
Region Ten Community Services Board	Albemarle County Department of Social Services	Charlottesville Redevelopment and Housing Authority	Charlottesville Department of Social Services	Virginia Cooperative Extension Agency	

HEALTHY

AND

READY

CHILDREN

DATA COLLECTION

Since 2003, the Partnership for Children has been working to develop a data collection system to identify strengths and gaps in the service system for young children and their families. It is an invaluable yet challenging task to collect data from fifteen partner agencies, but we are determined to develop a reliable method and a constant forum for discussion in order to improve our services. We have already been able to use this data to talk about some identified challenges and possible barriers to providing effective services. We intend to revisit and revise our methods as we learn what gives us the best information; over time the data collection process will mature and its results will become increasingly valuable.

There are many children in the community who are not served by our programs and are therefore not represented in our data. Part of our ongoing challenge is to continue to explore ways to compare the success of children in our programs with those in the broader community who are not enrolled in these programs.



We share a common passion for the best interest of the children and families we serve and are looking forward to holding many vital conversations that will ultimately help us to reach our goals. This report reflects and analyzes the data collected by the Partner agencies in the course of their work over the last three years to serve the needs of their clients. The Partners are committed to continuing to improve service provision and outcomes through continuous improvement of data collection and analysis.

NOTABLE PARTNER ACHIEVEMENTS INCLUDE:

Developmentally Healthy:

The home visiting programs' childhood immunization rates range from 86% to 100%, which are higher than the state rate of 69.2 to 75.6%. (Table 3)

All seven programs working on children getting their well child check-ups are achieving success rates of 92-100%. (Table 4)

100% of children enrolled in Partner programs are receiving yearly physical screenings. (Table 5)

88-100% of enrolled children in four programs supporting social-emotional development are making gains in social-emotional milestones. (Table 7)

89-100% of the children in our preschool programs are receiving USDA approved breakfast, lunch, and snack. (Table 10)

Ready to Learn:

80% of childcare scholarship recipients are receiving child care from licensed or registered providers. (Table 13)

Raised in Nurturing Families:

All child abuse victims, while enrolled in the VOCA program, demonstrate a decrease in rate of reported symptoms of abuse or neglect. In addition, 100% of secondary victims are receiving counseling. (Table 17)

Provided Basic Living Needs:

98-99.5% of food stamp applications were processed correctly and in a timely fashion, ensuring that families and children participating in our programming are able to access services. (Table 20)

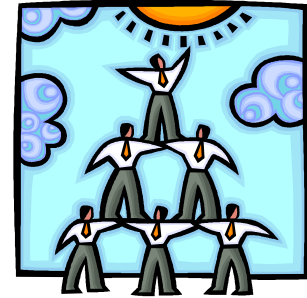
14 Partner agencies provide limited English Proficiency (LEP) materials and 13 are providing interpreters. Ten programs are providing training in cultural diversity. (Table 22)

IDENTIFIED CHALLENGES:

Challenges for the Partnership were also identified in the analysis. More understanding as to the possible barriers to achieving our goals is needed. Over the next year, we plan to address these challenges, learning from each other and planning better strategies as we do so.

Developmentally Healthy:

The rate of CHIP's enrollees making prenatal care visits on schedule declined from 69% to 58% compared to our other partnership programs, who are achieving a rate of 100%. CHIP serves an increasingly high-risk population of women, and faces many challenges in maintaining contact with these mothers during their pregnancy. The partnership has identified this issue and plans to collaborate to address the barriers and improve service provision. (Table 1)



Ready to Learn:

All children in the Bright Stars and CCS 4 year old preschool programs are not consistently reaching or exceeding the benchmark scores on the Pre-K PALS by the end of the pre-school year. The Partnership will continue to evaluate the scores to better understand potential causes. (Table 12)



Currently only one-eighth of childcare providers who are initially interested in becoming voluntarily registered actually maintain their registration. In an effort to encourage the ongoing registration of local childcare providers, the partnership is interested in getting data from ACDSS and CDSS to compare for future analysis; causes and interventions are being explored. (Table 13)

Raised in Nurturing Families:

In our data from programs that provide foster care and reunification with families, ACDSS data indicates a downward trend while CDSS is showing an upward trend for the percentage of cases where the length of time to achieve reunification is less than 12 months. The Partnership would like to look into this topic further so the two agencies can share information and learn about strategies to best reach our goal. (Table 16)

Partnership Outcomes	Agency Indicators that Support Partnership Outcome	Agency's Program	Agency Results			
DEVELOPMENTALLY HEALTHY			2003-04	2004-05	2005-06	
Consistent and appropriate prenatal care Table 1	Direct Services	Prenatal enrollees will make prenatal care visits on schedule.	CHIP	<i>New indicator~04-05</i>	69% (54) pregnant women kept scheduled recommended appointments.	58% (39)
		CYFS Healthy Families/Family Partners	<i>Data not available- Inadequate Sample Size</i>	100% (4) of enrolled (prior to 36 weeks) kept all prenatal appointments at these weeks: 12, 16, 20, 24, 28, 30, 32, 34, 36, 37, 38, 39, 40.	<i>Data not available- Inadequate Sample Size</i>	
		FOCUS -- Resource Mothers	100% (56)	100% (54)	100% (56)	
	Support	98 % of infants enrolled will be born within normal birth weight/height ranges as a result of prenatal education.	FOCUS -- Resource Mothers	98% (26)	100% (28)	100% (29)
		98% of pregnant teens enrolled demonstrate improved knowledge of good nutrition and avoidance of alcohol, drugs and tobacco.	FOCUS -- Resource Mothers	98% (55)	100% (54)	100% (56)
		Pregnant mothers assisted and or enrolled with emergency Medicaid coverage.	United Way Success By 6 -- Insurance for Children Project	93% (26)	80% (24)	90% (19)
RELEVANT NATIONAL, STATE, & LOCAL DATA						
STATISTIC	NATIONAL	VIRGINIA	C'VILLE	ALBEMARLE		
% entering care 1st trimester	83.7% in 2002 84.1% in 2003	84.8% in 2003 84.8% in 2004	77.4% in 2003 77.8% in 2004	81.7% in 2003 81.4% in 2004		
% with 10+ prenatal visits	74.7% in 2002 ♦ 75.4% in 2003 ♦	80% in 2002 78.6% in 2004	77.6% in 2002 71.4% in 2004	76.5% in 2002 77.9% in 2004		
% Low Birth Weight	7.8% in 2002 7.9% in 2003	8.2% in 2003 8.4% in 2004	8.7% in 2003 10.2% in 2004	7.8% 2003 6.5% in 2004		
OTHER RELEVANT INFORMATION						
<p>♦ Adequate and adequate plus prenatal care is defined by the Adequacy of Prenatal Care Utilization Index as pregnancy-related care beginning in the first four months of pregnancy with the appropriate number of visits for the infant's gestational age.</p> <p>☞ "Mothers with uninsured children, as well as mothers with less than a high school education, are more than three times likely as other mothers to have no prenatal care in the first trimester of pregnancy." (Building Bridges: A Comprehensive System for Healthy Development and School Readiness, Fig. 2)</p>						

Partnership Outcomes	Agency Indicators that Support Partnership Outcome	Agency's Program	Agency Results			
DEVELOPMENTALLY HEALTHY			2003-04	2004-05	2005-06	
Access to appropriate and affordable physical health and dental care Table 2	Direct Support	Every teen and/or Medicaid-eligible mom 30 years and under will receive an assessment home visit within 6 wks after delivery. Referrals for support services made.	Health Department -- Great Beginnings	40% (68) of referrals received a home visit & assessment; 36 referrals made (11 WIC, 7 Child Care, 7 Car seat, 11 other)	49% (113) of referrals received a complete assessment. 70% (79) of those agreeing to a visit had an assessment; 38 referrals made (5 HF/FP, 7 CHIP, 1 WIC, 8 child care, 3 DSS, 3 Car Seat 3 GED classes, 1 Salvation Army, 1 Food Bank, 1 Social Security, 1 Teen Sight, 1 MACAA, 1 Legal Aid, 1 Thrift shop, 1 Family Planning).	The Home Visiting Collaborative agreed in the fall of 05 to discontinue the program due to funding shortages. Data from July - September: 20 referrals were received. Of those 40% (8) received a home visit and a complete assessment.
		___% of preschool children enrolled with a health insurance provider.	ACDSS- Bright Stars	<i>New indicator~04-05</i>	92.6% (89)	89% (85)
			CCS - 4 year olds & Kindergarten	<i>New indicator~04-05</i>	No Data for this Indicator	No Data for this Indicator
			MACAA Head Start	87% (204)	82% (191)	85% (172)
		___% of preschool families are linked to continuous, accessible, non-emergency health care.	ACDSS- Bright Stars	<i>New indicator~04-05</i>	93.75% (90)	91% (87)
			CCS - 4 year olds & Kindergarten	<i>New indicator~04-05</i>	No Data for this Indicator	No Data for this Indicator
			MACAA Head Start	85% (200)	98% (229)	No Data for this Indicator
		___% of preschool families are linked to continuous, accessible, dental care.	ACDSS- Bright Stars	<i>New indicator~04-05</i>	84% (80)	78% (75)
			CCS - 4 year olds & Kindergarten	<i>New indicator~04-05</i>	No Data for this Indicator	No Data for this Indicator
			MACAA Head Start	13% (30)	24% (55)	No Data for this Indicator
90% of CHIP enrolled children will be enrolled in FAMIS or FAMIS Plus.	CHIP	92% (502)	93% (439)	88% (458)		
100% of enrolled children will have a medical home/physician	Region Ten -- Infant & Toddler Connection and Step by Step	100% (191)	100% (207)	Agency did not report		
Enrolled children who need assistance are re-enrolled.	United Way Success By 6 -- Insurance for Children	100% (58)	99% (66)	98% (60)		
Uninsured children receive state health insurance.	United Way Success By 6 -- Insurance for Children	86% (613)	91% (464)	89% (305)		
RELEVANT NATIONAL, STATE, & LOCAL DATA						
STATISTIC	NATIONAL	VIRGINIA	C'VILLE	ALBEMARLE		
% of children w/out insurance	11.6% in 2002	12.3% in 2002				
% of children eligible for Medicaid		90% by 12/01/02	78% by 12/01/02	103% by 12/01/02		
OTHER RELEVANT INFORMATION						
<p>6.2% of all children under 6 years of age had no health care visit to an office or a clinic in the last 12 months 2001-2002. Of this age group, 9.1% of poor children had no visits, 7.4% of near poor, and 4.8% of nonpoor. The percentage of the poor children under 6 years of age without insurance was 22.6% and for poor children with insurance was 6.7%. (Health, United States, 2004: With Chart book: Trends in the Health of Americans, Table 74)</p> <p>"Hispanic children are twice as likely as other children to be uninsured." (Building Bridges: Comp System for Healthy Dev & School Readiness)</p>						

Partnership Outcomes	Agency Indicators that Support Partnership Outcome	Agency's Program	Agency Results		
DEVELOPMENTALLY HEALTHY			2003-04	2004-05	2005-06
Up-to-date and on-time immunizations Note: data is on disparate age groups Table 3	Enrolled children will have up-to-date immunizations. Appropriate coverage defined by most current national Recommended Childhood Immunization Schedule (footnote it as per CDC, ACIP, AAP, AAFP). _____% of preschool children will receive the immunizations required by the State Board of Health before attending preschool.	Arc of the Piedmont -- Infant Development Project	100% (56)	100% (62)	100% (54)
		CHIP	95% (508)	96% (454)	97% (462)
		CYFS Healthy Families/Family Partners	88% (65)	86% (52)	93% (63)
		Health Department -- WIC	<i>New indicator~04-05</i>	93% (657) of 2-4 year olds.	71% (251 of 352) of WIC children aged 0-4. * This is a lower percentage b/c it has expanded to 0-4. (unable to assess UTD for Varicella)
		FOCUS -- Resource Mothers	100% (27) infants who remained in the program until their first birthday.	100% (28) infants who remained in the program until their first birthday.	100% (29) infants who remained in the program until their first birthday.
		ACDSS- Bright Stars	100% (80)	100% (96)	99% (95)
		CCS - 4 year olds	100% (128)	100% (139) 2 religious exemptions	100% (142)
		CCS - Kindergarten	100% (356) 2 religious exemptions	100% (339) 3 religious exemptions	100% (317)
		MACAA -- Head Start	100% (235)	100% (234)	100% (230)
		RELEVANT NATIONAL, STATE, & LOCAL DATA			
STATISTIC	NATIONAL	VIRGINIA	C'VILLE	ALBEMARLE	
% of children with up-to-date immunizations	80.5% 19-35 month olds (4:3:1:3:3) in 2003-04	75.6% daycare 72.9% kindergarten 69.2% Head Start in 2003-04	88.5% daycare 79.9% kindergarten 72.9% Head Start in 2004-05	88.5% daycare 79.9% kindergarten 72.9% Head Start in 2004-05	
OTHER RELEVANT INFORMATION					
<p>☞ In 2003, 67% of 19 to 35 month olds below the poverty line received the combined series of vaccines (4:3:1:3). 77% of 19 to 35 month olds at or above the poverty line received the combined series of vaccines in 2003. (Health, United States, 2004: With Chart book on Trends in the Health of Americans, Table 72)</p> <p>☞ In 2000, 73% of children 19 to 35 months old were fully immunized. In 2005, 80% of children were fully immunized. (CDC WONDER, Table 14.24a)</p>					

Partnership Outcomes	Agency Indicators that Support Partnership Outcome	Agency's Program	Agency Results				
DEVELOPMENTALLY HEALTHY			2003-04	2004-05	2005-06		
Consistent & up-to-date well-child check-ups Table 4	Direct Services	Enrolled children will have up-to-date well child care.	Arc of the Piedmont -- Infant Development Project	91% (50)	100% (62)	100% (54)	
			CHIP	90% (481)	95% (449)	96% (462)	
			CYFS -- Healthy Families/Family Partners	92% (68)	80% (34)	93% (63)	
		98 % of infants enrolled will be born within normal birth weight/height ranges as a result of prenatal education.	FOCUS -- Resource Mothers	98% (26)	100% (28)	100% (29)	
		___% of preschool children who receive a "School Entrance Physical" within 12 months before entry and within 30 days after entry.	ACDSS- Bright Stars	100% (80)	100% (96)	100% (96)	
			CCS - 4 year olds	100% (128)	100% (139)	100% (142)	
			CCS - Kindergarten	100% (356)	100% (339)	100% (317)	
			MACAA -- Head Start	98% (230)	100% (234)	100% (230)	
		___% of preschool Children who receive a dental screening within 6 months of entry (with parent permission).	ACDSS- Bright Stars	95% (76)	93% (89)	93% (89)	
			CCS - 4 year olds	No Data for this Indicator	94% (96) screened 18% (16) treated	91% (96) screened 16% (15) treated	
			MACAA -- Head Start	71% (167)	74% (172)	86% (198)	
		RELEVANT NATIONAL, STATE, & LOCAL DATA					
		STATISTIC	NATIONAL	VIRGINIA	C'VILLE	ALBEMARLE	
OTHER RELEVANT INFORMATION							
<small>☞ In 2003, children under the age of six without health insurance coverage were much less likely than those with health insurance coverage to have received a well-child check-up in the past year (67 % vs 85%).</small>							

Partnership Outcomes	Agency Indicators that Support Partnership Outcome	Agency's Program	Agency Results			
DEVELOPMENTALLY HEALTHY			2003-04	2004-05	2005-06	
Periodic developmental screenings Table 5	Direct Services	Enrolled children receive regular developmental assessments using Ages and Stages.	Arc of the Piedmont -- Infant Development Project	100% (56)	100% (62)	100% (54)
			CHIP	92% (492)	94% (440)	80% (462)
			CYFS -- Healthy Families/Family Partners	100% (81)	100% (70)	100% (68)
		___% of enrolled children who receive yearly physical screenings (height/weight & vision/hearing assessed).	ACDSS- Bright Stars	100% (80)	100% (96)	100% (96)
			CCS - 4 year olds	100% (128)	100% (139)	100% (142)
			CCS - Kindergarten	100% (356)	100% (339)	100% (317)
			MACAA -- Head Start	100% (235)	100% (234)	100% (230)
		___% of enrolled children who are referred and monitored when developmental problems are indicated.	ACDSS- Bright Stars	100% (80)	100% (96)	No Data for this Indicator
			CCS - 4 year olds	100% (128)	100% (139)	No Data for this Indicator
			MACAA -- Head Start	16% (37) were referred	10% (24) were referred	11% (26) were referred
		Early Screening Inventory (ESI) conducted each fall with a re-test done in the spring for students who did not meet minimum standards on first test.	MACAA -- Head Start	96% (226)	100% (234)	100% (230)
		To determine eligibility, children will receive a comprehensive multidisciplinary evaluation in the following areas: cognitive, physical (including vision and hearing), communication, social/emotional and adaptive.	Region Ten -- Infant & Toddler Connection and Step by Step	100% (152)	100% (145)	Agency did not report
100% enrolled children will receive on-going developmental assessments with a formal assessment including cognitive, physical, communication, social/emotional and adaptive areas annually.	Region Ten -- Infant & Toddler Connection and Step by Step	100% (191)	100% (207)	Agency did not report		
RELEVANT NATIONAL, STATE, & LOCAL DATA						
STATISTIC	NATIONAL	VIRGINIA	C'VILLE	ALBEMARLE		
OTHER RELEVANT INFORMATION						
<p>☞ "Fewer than half of parents recall their child's development being assessed by the health care provider, although professional guidelines call for assessments at most visits." (Building Bridges: A Comprehensive System for Healthy Development and School Readiness, Fig. 2)</p> <p>☞ Greater than 50 % of developmental problems are not identified until school entry. (Building Bridges: A Comprehensive System for Healthy Development and School Readiness)</p>						




Partnership Outcomes	Agency Indicators that Support Partnership Outcome	Agency's Program	Agency Results			
DEVELOPMENTALLY HEALTHY			2003-04	2004-05	2005-06	
Developmentally on target for Physical Milestones Table 6	Direct Services Enrolled children are making progress toward specific developmental goals, as outlined in an individualized family service plan.	Arc of the Piedmont -- Infant Development Project	100% (56)	100% (62)	100% (54)	
		Enrolled children will be typically developing on the Ages and Stages Questionnaire.	CHIP	88% (470)	94% (414)	93% (369)
			CYFS -- Healthy Families/Family Partners	95% (77)	97% (68)	99% (67)
RELEVANT NATIONAL, STATE, & LOCAL DATA						
STATISTIC	NATIONAL	VIRGINIA	C'VILLE	ALBEMARLE		
Partnership Outcomes	Agency Indicators that Support Partnership Outcome	Agency's Program	Agency Results			
DEVELOPMENTALLY HEALTHY			2003-04	2004-05	2005-06	
Developmentally on target for Social-Emotional Milestones Table 7	Direct Services Children demonstrate improved social/emotional skills in school and at home.	ACDSS- Bright Stars	93% (75)	100% (96)	100% (96)	
		Children served by the Family Support Program for more than one year show improvement in school attendance and behavior.	ACDSS -- Family Support Program	27% (48)	65.6% (97)	63% (25) improvement in attendance; 70% (44) improvement in behavior, where it was identified as a problem
		Enrolled children are making progress toward specific developmental goals, as outlined in an individualized family service plan.	Arc of the Piedmont -- Infant Development Project	100% (56)	100% (62)	100% (54)
		Preschool 4 year old children participate in violence prevention program.	CCS - 4 year olds	100% (128)	100% (144)	No Data for this Indicator
		Enrolled children will be typically developing on the Ages and Stages Questionnaire.	CHIP	88% (470)	94% (414)	93% (369)
			CYFS -- Healthy Families/Family Partners	95% (77)	97% (68)	99% (67)
		Children learn to sit still listen to instructions, attend and the ability to share resources.	CYFS -- Play Partners	100% (18) volunteers responding reported improvement in interest & attention of the children being read to.	100% (17) of volunteers responding reported improvement in children attending and following instructions.	100% (22) volunteers responding reported improvement in children attending and following instructions.

Partnership Outcomes	Agency Indicators that Support Partnership Outcome	Agency's Program	Agency Results			
DEVELOPMENTALLY HEALTHY			2003-04	2004-05	2005-06	
Developmentally on target for Social-Emotional Milestones Table 7 cont'd	Direct Services	Children practice skills and positive social behavior and meet goal for social/emotional development.	CYFS -- STAR Kids	90% (228) children met or exceeded curriculum goal for social and emotional development by May 2004.	84% (210) children met or exceeded curriculum goal for social and emotional development by May 2005.	89% (183) children met or exceeded curriculum goal for social and emotional development by May 2006.
		100% of enrolled students participate in Al's Pal's resiliency programming with training and outcomes measured in the social skills section of the Creative Curriculum Developmental Continuum.	MACAA -- Head Start	100% (235)	100% (234)	100% (230)
		Strengthening Families participant children will show increased social/life skills as evidenced by the parent and child version of the Social Skills Rating System at completion of the 14-week program.	Region Ten -- Strengthening Families Program	100% (52)	Agency did not report	Agency did not report
		Strengthening Families participant children will show reduced internalizing behavior problems as measured by a modified version of the Child Behavior Checklist incorporated in the Strengthening Families Program Parenting Questionnaire and the Child Rating Scale, upon completion of the 14-week program.	Region Ten -- Strengthening Families Program	Agency did not report	Agency did not report	Agency did not report
RELEVANT NATIONAL INFORMATION						
<p>☞ In 2003, among children who had emotional or behavioral difficulties, 44.5% had contact with a mental health professional.</p> <p>☞ "It is estimated that about one in five children has a mental, emotional, or behavioral disorder and that 70 percent of these children do not receive mental health services." (Building Bridges: A Comprehensive System for Healthy Development and School Readiness, p. 20)</p> <p>☞ In 2003, children in poor families (7.8%) were more likely to have had emotional or behavioral difficulties than children in families that were not poor (4.6%).</p> <p>☞ In 2003, Caucasian boys (6.6%) & African-American boys (8.3%) were more likely to have emotional or behavioral difficulties than were Hispanic boys (4.7%)</p>						

Partnership Outcomes	Agency Indicators that Support Partnership Outcome	Agency's Program	Agency Results			
DEVELOPMENTALLY HEALTHY			2003-04	2004-05	2005-06	
Developmentally on target for Cognitive Milestones Table 8	Direct Services	Enrolled children are making progress toward specific developmental goals, as outlined in an individualized family service plan.	Arc of the Piedmont -- Infant Development Project	100% (56)	100% (62)	100% (54)
		Enrolled children will be typically developing on the Ages and Stages Questionnaire.	CHIP	88% (470)	94% (414)	93% (369)
			CYFS -- Healthy Families/Family Partners	95% (77)	97% (68)	99% (67)
		80% (97) Head Start children entering kindergarten will regularly associate sounds with written words.	MACAA -- Head Start, Parents in Education	No Data for this Indicator	No Data for this Indicator	90% (102)
		80% of (97) Head Start children entering kindergarten can identify at least 10 letters of the alphabet.	MACAA -- Head Start	No Data for this Indicator	No Data for this Indicator	90% (102)
		80% (97) of Head Start children entering kindergarten can use complex sentences to express ideas and feelings.	MACAA -- Head Start	No Data for this Indicator	No Data for this Indicator	93% (106)
95% (29) of PIE Program students are promoted to the next grade level.	MACAA --Parents in Education	84% (21)	81% (21)	No Data for this Indicator		
RELEVANT NATIONAL, STATE, & LOCAL DATA						
STATISTIC	NATIONAL	VIRGINIA	C'VILLE	ALBEMARLE		
% of children promoted in Kindergarten-3rd grade		96.9% in 2003-04	96.7% in 2003-04	98.5% in 2003-04		

Partnership Outcomes	Agency Indicators that Support Partnership Outcome	Agency's Program	Agency Results			
DEVELOPMENTALLY HEALTHY			2003-04	2004-05	2005-06	
Early intervention when developmental problems are identified	Direct Services	Enrolled children receive early intervention services and therapies according to an individualized family service plan.	Arc of the Piedmont -- Infant Development Project	100% (56)	100% (56)	100% (54)
		Early intervention provided when a developmental problem is identified.	ACDSS- Bright Stars	100% (80)	100% (96)	No Data for this Indicator
			CCS -4 year olds	No Data for this Indicator	No Data for this Indicator	23 referrals 14 services
		___% of enrolled children who are referred when developmental problems are indicated.	ACDSS- Bright Stars	<i>New-Indicator 06-07</i>	<i>New-Indicator 06-07</i>	<i>New-Indicator 06-07</i>
		75% of enrolled children screened by Ages & Stages will be developmentally on target.	CYFS -- Healthy Families/Family Partners	95% (77) of enrolled children	97% (68) of enrolled children	88% (62) of enrolled children
		100% of enrolled children will receive service coordination to coordinate early intervention (Part C IDEA) services, community and health services, and to transition children into other settings when no longer eligible for services.	Region Ten -- Infant & Toddler Connection and Step by Step	100% (191)	100% (207)	Agency did not report
	Support	Referrals will be made and monitored when developmental problems are identified. Family Service Worker/Home Visitor will provide follow-up support.	ACDSS-Bright Stars	100% (80)	100% (96)	No Data for this Indicator
			CYFS -- Healthy Families/Family Partners	100% (4)	100% (2)	100% (6)
			MACAA -- Head Start	100% (19)	100% (15)	100% (13)
		Children identified as delayed on Ages and Stages will be referred as appropriate	CHIP	100% (16) of children identified as delayed had a referral.	100% (26) of children identified as delayed had a referral.	100% (18) of children identified as delayed had a referral.
		100% of enrolled children will receive early intervention services to address specific developmental goals according to an individualized family service plan (IFSP) that will be formally reviewed at least every 6 months.	Region Ten -- Infant & Toddler Connection and Step by Step	100% (191)	100% (207)	Agency did not report
		At least 2% of the birth to three population will receive early intervention services through the Infant and Toddler Connection of the Blue Ridge	Region Ten -- Infant & Toddler Connection and Step by Step	2.50%	3%	Agency did not report
		RELEVANT NATIONAL, STATE, & LOCAL DATA				
STATISTIC	NATIONAL	VIRGINIA	C'VILLE	ALBEMARLE		
OTHER RELEVANT INFORMATION						
~20.3% of kindergarteners screened (PALS-K) in VA identified as needing intervention under the Early Intervention Reading Initiative in 2002-03. (No Time to Waste: Indicators of School Readiness, 2004)						

Partnership Outcomes	Agency Indicators that Support Partnership Outcome	Agency's Program	Agency Results			
DEVELOPMENTALLY HEALTHY			2003-04	2004-05	2005-06	
Access to appropriate and good nutrition Table 10	% of enrolled students receive USDA approved breakfast, lunch and snack.	ACDSS-Bright Stars	100% (80)	100% (96)	100% (96)	
		CCS -4 year olds	No Data for this Indicator	87% (124)	89% (126)	
		MACAA -- Head Start	100% (235)	100% (234)	100% (230)	
	Direct Services	80% of enrolled CHIP children and pregnant women will be enrolled in WIC.	CHIP	88% (480)	89% (469)	88% (427)
		Enrolled families will show improved nutrient quality of family meals:	Virginia Coop Ext--Healthy Weights for Healthy Kids	85% (150 enrolled, 88 graduated) improved nutrient quality: 26% increase in calcium 20% increase in vitamin A 17% increase in fiber 14% increase in vitamin C 11% increase in iron 11% increase in B6.	92.3% (97 enrolled , 59 graduated) showed positive change at exit. B6-34% increase Vit A 44%	82% (116 enrolled, 46 graduated) showed improvement in one or more nutrition practices.
		Enrolled youth will learn ways to adopt healthy food related behaviors.	Virginia Coop Ext--Healthy Weights for Healthy Kids	72% (371) said they had increased intake of fruits and vegetables.	No data available -low salary led to vacancy in position this year.	57% (97) reported change in eating behavior.
		Participants will be empowered to meet the food/nutrient needs of themselves and family members.	Virginia Cooperative Ext-Smart Choices Nutrition	New indicator~04-05	No data available -low salary led to vacancy in position this year.	82% (116 enrolled, 46 graduated) showed improvement in one or more nutrition practices.
Support	Every teen and/or Medicaid-eligible mom 30 years and under will receive an assessment home visit within 6 wks after delivery. Referrals for support services made.	Health Department -- Great Beginnings	40% (68) of referrals received a home visit & assessment; 36 referrals made (11 WIC, 7 Child Care, 7 Car seat, 11 other)	49% (113) of referrals received a complete assessment. 70% (79) of those agreeing to a visit had an assessment; 38 referrals made (5 HF/FP, 7 CHIP, 1 WIC, 8 child care, 3 DSS, 3 Car Seat 3 GED classes, 1 Salvation Army, 1 Food Bank, 1 Social Security, 1 Teen Sight, 1 MACAA, 1 Legal Aid, 1 Thrift shop, 1 Family Planning).	The Home Visiting Collaborative agreed in the fall of 05 to discontinue the program due to funding shortages. Data from July - September: 20 referrals were received. Of those 40% (8) received a home visit and a complete assessment.	
	RELEVANT NATIONAL, STATE, & LOCAL DATA					
STATISTIC	NATIONAL	VIRGINIA	C'VILLE	ALBEMARLE		
% eligible for fr/red lunch	36% in 2002	29.3% in 2002				
OTHER RELEVANT INFORMATION						
<small>Of household with child members from 1999-2002, 18.1% of household with child members were in food insecure households (17.3 without hunger, .8% with hunger among children). (America's Children: Key National Indicators of Well-Being, 2003, No. 196)</small>						

Partnership Outcomes	Agency Indicators that Support Partnership Outcome	Agency's Program	Agency Results		
DEVELOPMENTALLY HEALTHY			2003-04	2004-05	2005-06
Opportunities for recreation and physical activity Table 11	Direct Services ___% of Preschool children who participate in 60 minutes of daily gross motor activity.	ACDSS-Bright Stars	100% (80)	100% (96)	100% (96)
		CCS -4 year olds	100% (128)	100% (139)	100% (142)
		MACAA -- Head Start	100% (235)	100% (234)	100% (230)
	Families and youth to adopt food related behaviors and physical activity patterns based on the recommendations of the Dietary Guidelines for Americans.	Virginia Cooperative Extension -- Fit for Life Kids	<i>New indicator~04-05</i>	<i>No data available -low salary led to vacancy in position this year.</i>	64% (86) reported increased nutrition and activity knowledge.
OTHER RELEVANT INFORMATION					
<p>  National goal: children 2 years and older should get 60 minutes moderate to vigorous exercise on every day of the week. </p> <p>  Even among children aged 3 and 4 years, those who were less active tended to remain less active than most of their peers after age 3 years. (Facts and Resources on the Health Benefits of Physical Activity). </p> <p>  All data without specific notation came directly from the U.S. Dept of Health & Human Services/CDC/National Center for Health & Statistics Report: <u>U.S. Children with Emotional and Behavioral Difficulties: 2001-2003 National Health Interview Surveys</u>. June 23,2005 </p>					

Partnership Outcomes	Agency Indicators that Support Partnership Outcome	Agency's Program	Agency Results		
READY TO LEARN			2003-04	2004-05	2005-06
Experiences promoting early literacy and learning Table 12	Children in Preschool for at least six months reach or exceed the benchmark developmental range scores on the PreK PALS at the end of the pre-school year.	ACDSS -- Bright Stars	96% (69)	79.5% (70)	80% (67)
		CCS - 4 year olds	93% (122)	81 % (138)	85% (115)
		MACAA -- Head Start	<i>New indicator~06-07</i>	<i>New indicator~06-07</i>	<i>New indicator~06-07</i>
	Preschool alumni achieve the benchmark score on the KPALS during the kindergarten year.	ACDSS -- Bright Stars Alumni	85% (47)	77.8% (49)	78.5% (54)
		CCS - 4 year olds	No Data for this Indicator	No Data for this Indicator	No Data for this Indicator
		MACAA -- Head Start	<i>New indicator~06-07</i>	<i>New indicator~06-07</i>	<i>New indicator~06-07</i>
	Children in Kindergarten for at least six months will meet or exceed the PALS benchmark.	Albemarle County Public Schools	90% (810)	88% (795)	91% (834)
		Charlottesville City Schools	Agency did not report	Agency did not report	Agency did not report
	Children increase their desire to be read to.	CYFS -- Play Partners	92% (46) parents responding reported an increase in time spent reading to their child. 8% (4) parents reported time spent reading remained the same. 100% (18) volunteers reported child's interest and attention to book improved.	82% (32) parents responding reported an increase in time spent reading to their child. 100% (16) volunteers reported child's interest and attention to book improved.	93% (28) parents responding reported their child is more interested in books and being read to. 100% (16) volunteers reported child's interest and attention while being read to improved.
			MACAA Head Start	100% (235)	100% (234)
	Children learn and use new vocabulary.	CYFS -- Play Partners	96% (74) adults responding reported an increase in the vocabulary of children ages 2 years and above who participated in the program.	90% (56) adults responding reported an increase in the vocabulary of children ages 2 years and above who participated in the program.	93% (52) adults responding reported an increase in the vocabulary of children ages 2 years and above who participated in the program.
			MACAA Head Start	100% (235)	100% (234)
		Families will understand the importance of reading to their child.	MACAA Head Start	100% (235)	100% (234)
	Family Service Workers promote early literacy with families.	MACAA Head Start	100% (7) workers	100% (7) workers	100% (7) workers
	RELEVANT NATIONAL, STATE, & LOCAL DATA				
STATISTIC	NATIONAL	VIRGINIA	C'VILLE	ALBEMARLE	
% of Kindergarteners did not pass PALS & needed Reading Intervention		20% in 2004	25.7% in 2004 n/a in 2005	16% in 2004 13% in 2005	
OTHER RELEVANT INFORMATION					
58% of children ages 3 to 5 were read to daily by a family member in 2001. Only 48% of children with family incomes below the poverty line were read to everyday compared to 61% of children with family income at or above the poverty line. (Key National Indicators of Well Being, 2003, p.48)					

Partnership Outcomes	Agency Indicators that Support Partnership Outcome	Agency's Program	Agency Results			
READY TO LEARN			2003-04	2004-05	2005-06	
Affordable and quality child care Table 13	Direct Services	Parents select safe child care services that facilitate the child's growth and development.	CYFS -- Child Care Quality	<i>New indicator~04-05</i>	100% (46) of parents responding indicated satisfaction with the R&R services and success in finding care	99% (72) of those parents responding indicated satisfaction with the R&R services and success in finding care
		Providers have knowledge of the safety, nutritional, environmental, nurturing and developmental needs of children.	CYFS -- Child Care Quality	<i>New indicator~04-05</i>	20% (32) of the individuals requesting registration packets completed the process and 48% (20) of eligible providers renewed	21% (29) of the individuals requesting registration packets completed the process and 52% (16) of eligible providers renewed.
		Providers offer quality care including a safe nurturing environment, diverse developmentally age appropriate experiences and materials, and positive discipline techniques.	CYFS -- Child Care Quality	<i>New indicator~04-05</i>	75% (54) providers showed improvement	89% (172) providers showed improvement
		Income eligible families receive quality childcare at no charge.	MACAA -- Head Start	100% (235)	100% (234)	100% (230)
		Children receive care from licensed or registered providers.	United Way Success by 6 -- Child Care Scholarship	85% (252)	80% (274)	81% (207)
		Infants and preschool children have stable child care for at least one year after starting with the program.	United Way Success by 6 -- Child Care Scholarship	89% (173)	91% (147)	82 % (64)
		80% of Child care providers will report increase understanding of child development through Workshops	Virginia Cooperative Extension -- Penn State Better Kid Care	80% (24) providers reported improved understanding of individual temperaments and children's thought processes.	100% (61) providers	99% (68) providers attended 6 two-hour sessions.
		Child care providers will receive education about developmentally appropriate activities.	Virginia Cooperative Extension -- Penn State Better Kid Care	42 providers attended two 8 hour sessions	61 Providers	24 providers attended two 8 hour workshops

Partnership Outcomes	Agency Indicators that Support Partnership Outcome	Agency's Program	Agency Results		
READY TO LEARN			2003-04	2004-05	2005-06
Affordable and quality child care Table 13 cont'd	Applications from families requiring child care assistance are processed in a timely fashion.	ACDSS -- Childcare Services	100% (178)	100% (148)	99.2% (129)
	Every teen and/or Medicaid-eligible mom 30 years and under will receive an assessment home visit within 6 wks after delivery. Referrals for support services made.	Health Department -- Great Beginnings	40 % (171) home visits; 19 referred -WIC, 10 - CHIP, 6 -Car seat, 3 - Child Care, 2 -Babies Can't Wait, 2 -FAMIS and 7 other referrals.	49% (113) of those referred received a complete assessment. 70% (79) of those who agreed to a visit had an assessment. REFERRALS: 5 -HF/FP, 7 - CHIP, 1 -WIC, 8 -child care assistance, 3 -DSS, 3-Car Seat 3-GED classes, 1- Salvation Army, 1- Food Bank, 1- Social Security, 1- Teen Sight, 1- MACAA, 1- Legal Aid, 1- Thrift shop, and 1- Family Planning.	The Home Visiting Collaborative agreed in the fall of 05 to discontinue the program due to funding shortages. Data from July - September: 20 referrals were received. Of those 40% (8) received a home visit and a complete assessment.
RELEVANT NATIONAL, STATE, & LOCAL DATA					
STATISTIC	NATIONAL	VIRGINIA	C'VILLE	ALBEMARLE	
% of 3 - 5 yr old children enrolled in preprimary education.	42% in 1990 61% in 2000				
OTHER RELEVANT INFORMATION					
A National Study in 1995 of 401 Childcare centers: 86% mediocre or poor quality & 12% lowest rating -failing to provide children with sufficient opportunities to learn and to meet their health and safety needs.					
8% of infant & 20% of preschool classrooms were of good or excellent quality. 40% of infant & 10% of preschool programs provide poor quality. 70% of centers actually compromise a child's ability to enter school ready to learn. (Building Bridges: A Comprehensive System for Healthy Development & School Readiness.)					
62% of children have working parents and spend 50 hours a week in care outside the home. (2005 VA KIDS COUNT Data Book)					
Opportunities to participate in a structured pre-school program Table 14	100% of enrolled students have opportunity to interact with other children around activities appropriate for pre-schoolers.	ACDSS- Bright Stars	100% (80)	100% (96)	100% (96)
	Children referred to preschool programs when appropriate.	Arc of the Piedmont -- Infant Development Project	100% (56)	100% (62)	100% (54)
		CHIP	<i>New indicator~04-05</i>	55% (50)	43% (35)
		CYFS -- Healthy Families/Family Partners	83% (6)	85% (7)	80% (8)
	4 year old children receive a free and quality educational experience.	CCS -4 year olds	100% (128)	100% (139)	100% (142)
	50% of referred age appropriate children will be enrolled in preschool programs.	CHIP	84% (39)	89% (44)	65% (23)
		CYFS -- Healthy Families/Family Partners	83% (4)	85% (4)	100% (6)
100% of enrolled students have opportunity to interact with other children around activities appropriate for pre-schoolers.	MACAA Head Start	100% (235)	100% (234)	100% (230)	

Partnership Outcomes	Agency Indicators that Support Partnership Outcome	Agency's Program	Agency Results			
READY TO LEARN			2003-04	2004-05	2005-06	
Parents are involved in the child's education Table 15	Direct Service	Parents of Bright Stars children attend two parent teacher conferences during the school year.	ACDSS -- Family Support Program	<i>New-Indicator 05-06</i>	<i>New-Indicator 05-06</i>	87% (84)
		Parents of Bright Stars children attend at least three Bright Stars/school functions during the school year.	ACDSS -- Bright Stars	<i>New-Indicator 05-06</i>	<i>New-Indicator 05-06</i>	90% (86)
		Kindergarten parents will attend two parent- teacher conferences.	Albemarle County Public Schools	89%	88%	88%
			Charlottesville City Schools	Agency did not report	Agency did not report	Agency did not report
		Parents will attend at least one preschool function.	CCS -4 year olds	97% (124)	97% (139)	91% (127)
		Parents meet with preschool teachers at least 2 times annually.	CCS -- Preschool 4 Year Old Program	98% (124)	97% (123)	94% (131)
		Parents meet with classroom teachers twice per year, receive home visits twice per year and participate in goal setting through Family Partnership Agreements.	MACAA -- Head Start	100% (235)	100% (234)	100% (230)
		85% parents acknowledge improved interaction with school staff	MACAA -- Parents in Education	No Data for this Indicator	70% (14)	No Data for this Indicator
RELEVANT NATIONAL, STATE, & LOCAL DATA						
STATISTIC	NATIONAL	VIRGINIA	C'VILLE	ALBEMARLE		
% of parents attend a general school meeting	77% in 1996 78% in 1999 88% in 2003					
OTHER RELEVANT INFORMATION						
Students with parents who are involved in their school tend to have fewer behavioral problems and better academic performance, and are more likely to complete secondary school than students whose parents are not involved in their school. (Henderson and Berla. "A New Generation of Evidence: The Family is Critical to Student Achievement." Washington, DC: National Committee for Citizens in Education, 1994.)						

Partnership Outcomes	Agency Indicators that Support Partnership Outcome	Agency's Program	Agency Results			
RAISED IN NURTURING FAMILIES			2003-04	2004-05	2005-06	
<p>A healthy parent-child relationship includes:</p> <ul style="list-style-type: none"> ◆ interaction and attachment with both parents ◆ effective communication ◆ attentive to child's needs <p>Table 16</p>	Direct Services	Children in families served by the Family Support Program are able to remain in their homes without out-of-home placement.	ACDSS -Family Support	99% (174)	98.6% (146 of 148 avg)	No Data for this Indicator
		In 76.2% of cases where reunification with the family is the goal, length of time to achieve reunification will be less than 12 months. (Percentages are based on Federal goals.)	ACDSS -Foster Care	100% of (12)	83.3% (15)	Agency researching results
			CDSS -- Foster Care	10% (1)	50% (14)	56% (14)
		In 32% of cases where adoption is the goal, length of time to achieve adoption is less than 24 months. (Percentages are based on Federal goals. This goal is very challenging in current court system.)	ACDSS -Foster Care	40% (2)	16.7% (2)	Agency researching results
			CDSS -- Adoption	0% (0)	11%(1)	20% (3)
		Children enrolled at least one year will show appropriate parent-child relationship as measured by two subscales on the HOME scale.	Arc of the Piedmont -- Infant Development Project	100% (2)	100% (2)	Agency researching results
			CHIP	39% (88)	72% (180)	63% (205)
			CYFS -- Healthy Families/Family Partners	48% (19) of families demonstrated appropriate responsiveness & 90% (19) of families demonstrated appropriate attentiveness.	89% (19) of families demonstrated improved responsiveness and 47% (19) of families demonstrated improved attentiveness.	80% (28) of families demonstrated improved responsiveness and 80 % (28) of families demonstrated improved attentiveness.
		Parents with developmental disabilities provided targeted supports to more effectively meet their child's needs.	Arc of the Piedmont -- Infant Development Project	<i>New indicator ~ 04-05</i>	38% (23) parents have a disability. 100% (23) apply what they've learned.	40% (22) parents have a disability. 100% (22) apply what they've learned.
		Parents will learn from videotaped interactions and will apply what they have learned to relate in a more positive manner and to more effectively meet their children's needs.	Arc of the Piedmont -- Infant Development Project	<i>New indicator ~ 04-05</i>	73% (45) parents enrolled	82% (44) parents enrolled
		80% of children provided Foster Care Prevention services will not require placement in Foster Care.	CDSS -- Foster Care Prevention	77% (54)	86% (71)	86% (83)
		98% of families will participate in weekly meetings to provide information and resources that foster positive communications and cooperation in order to create a stable and nurturing home.	FOCUS -- Resource Mothers	100% (56)	100% (54)	99% (55)
90% of the infants' fathers will participate in weekly meetings to provide information and resources that foster positive communications and cooperation in order to create a stable and nurturing home.	FOCUS -- Resource Mothers	80% (45)	85% (46)	91% (51)		

Partnership Outcomes	Agency Indicators that Support Partnership Outcome	Agency's Program	Agency Results				
RAISED IN NURTURING FAMILIES			2003-04	2004-05	2005-06		
<p>A healthy parent-child relationship includes:</p> <ul style="list-style-type: none"> ◆ interaction and attachment with both parents ◆ effective communication ◆ attentive to child's needs <p>Table 16 cont'd</p>	Direct Services	Parents will apply what they have learned to relate in a more positive manner and to more effectively meet their children's needs.	CYFS -- Family Connections	<i>New indicator ~ 04-05</i>	(1) 100% (22) parents who completed the SES class & the STY class (36) had no CPS self reports this year. (2) SES Parents who completed the AAPI (22) has the following AAPI averages: constructs B and D) = 64% (construct A and E) = 74% (construct C) =74% Total = 71% (3) 100% parents completing the SES class (22), STY class (36) and Saturday Workshops (92) indicated satisfaction with the classes and workshops. (4) STY Parents who completed the AAPI (6) had the following AAPI averages: (construct B and D)=67% (construct A and E)=83% (construct C)=100% Total = 83%	(1) 100% of the parents who participated in the SES class (69) and the STY class (76) had no CYFS initiated CPS reports this year. (2) 100% of SES and STY Parents (70) who completed the Parent Satisfaction Survey Strongly Agree or Agree that the class helped them improve their parenting skills and better understand their children. (3) 100% of STY parents and 97% of SES parents who completed the Parent Satisfaction Survey (70) felt that they could apply what they had learned. (4) 100% of the teenagers completing the STY class (19) felt their parents benefited from taking the class and saw improvements in their relationship with their parents. (5) 100% of Saturday Workshop participants (69) who completed a Satisfaction Survey felt they learned practical tips, could apply what they learned, and were satisfied with the parenting workshops.	
		Parents meet with classroom teachers twice per year, receive home visits twice per year and participate in goal setting through Family Partnership Agreements.	MACAA -- Head Start		100% (235)	100% (234)	100% (230)
		Strengthening Families participants will show increased family organization, cohesion and improved communication, as well as reduced family conflict as measured by the Moos Family Environment Scale; and participant parents will show decreased parental stress as measured by the parenting Stress Index included in the Strengthening Families Program Parenting Questionnaire, upon completion of the 14-week program.	Region Ten -- Strengthening Families Program		100% (52)	Agency did not report	Agency did not report
		Strengthening Families participants will show improved levels of family communication as measured by the Moos Family Environment Scale, upon completion of the 14-week program.	Region Ten -- Strengthening Families Program		100% (52)	Agency did not report	Agency did not report
		Strengthen the ability of individuals and families to nurture and support children's development by increasing parent knowledge skills and practices.	Virginia Cooperative Extension -- Positive Parenting, Parents Forever, Discipline for Young Children		94% (17) Charlottesville parents in Parents Forever, participants better understood the effects of separation/conflicts on their children. 100% (18) learned how to keep their children out of the middle. 82% (14) agreed that children need both parents in their lives.	86% (135) parents in surrounding counties program agree they understood the effects of separation/conflict.76% (120) agreed that they learned to keep their children out of the middle. 97% (150) agreed that children need both parents	89% (120) of parents in surrounding counties agreed that they understood the effect of separation and conflict.
RELEVANT NATIONAL, STATE, & LOCAL DATA							
STATISTIC	NATIONAL	VIRGINIA	C'VILLE	ALBEMARLE			
% of children in foster care							
OTHER RELEVANT INFORMATION							


Partnership Outcomes	Agency Indicators that Support Partnership Outcome	Agency's Program	Agency Results		
RAISED IN NURTURING FAMILIES			2003-04	2004-05	2005-06
Parent-child interactions can affect children's behavior over and above the influence of socioeconomic and demographic factors, such as income, family structure and parent education. High parental warmth and supportiveness contribute to healthy development. (<i>Family Strengths: Often Overlooked, But Real</i> (Moore, K.A., Chalk, R., Scarpa, J., & Vandivere, S., 2002),					

Partnership Outcomes	Agency Indicators that Support Partnership Outcome	Agency's Program	Agency Results			
RAISED IN NURTURING FAMILIES			2003-04	2004-05	2005-06	
<p>Free from abuse and neglect:</p> <p>◆ effective and non-physical discipline</p> <p>◆ developmentally appropriate expectations and structure</p> <p>◆ attentive to child's needs</p> <p>Table 17</p>	Direct Services	Children served by the Family Support Program are safe from abuse and neglect.	ACDSS - Family Support	90% (158)	83.8% (124)	87% (21)
		Less than 6.1 % of children who've been found to have been maltreated will have an occurrence of maltreatment.	ACDSS	0%	2.6% (1)	Agency researching results
			CDSS	0% (0)	0% (0)	0% (0)
		Enrolled families will not engage in behavior that necessitates a CPS report being made by program staff.	Arc of the Piedmont -- Infant Development Project	0% (0)	0% (0)	0% (0)
			CYFS -- Healthy Families/Family Partners	1% (3) of families had a new CPS referral made.	Less than 1% (2) of families had a new CPS referral made.	Less than 1% (2) of families had a new CPS referral made.
			CHIP	2% (6)	2% (5)	3% (11)
		Primary victims will demonstrate reduction in symptoms associated with abuse/neglect. **Data only reflects the 7 cases that have closed. 48 primary victims were served.**	CYFS -- Victims of Child Abuse	<i>New indicator 04-05</i>	83% (11) youth demonstrated a reduction in symptoms.	100% (7) youth demonstrated a reduction in symptoms.**
		The effects of child abuse/neglect will be reduced for <i>secondary</i> victims which will help mitigate the trauma experienced by primary victims.	CYFS -- Victims of Child Abuse	<i>New indicator~04-05</i>	100% (15) of secondary victims received counseling to help mitigate trauma experienced.	100% (34) of secondary victims received counseling to help mitigate trauma experienced.
Family Service Workers and classroom staff have ongoing dialogue with parents.	MACAA -- Head Start	100% (31)	100% (29)	100% (29)		
RELEVANT NATIONAL, STATE, & LOCAL DATA						
STATISTIC	NATIONAL	VIRGINIA	C'VILLE	ALBEMARLE		
OTHER RELEVANT INFORMATION						
As many as one-third of parents who experienced maltreatment in childhood may victimize their own children (Fromm 2001).						
Children younger than 4 years are at greatest risk of severe injury or death. In 2003, children younger than 4 years accounted for 79% of child maltreatment fatalities, with infants under 1 year accounting for 44% of deaths (DHHS 2005).						

Partnership Outcomes	Agency Indicators that Support Partnership Outcome	Agency's Program	Agency Results				
RAISED IN NURTURING FAMILIES			2003-04	2004-05	2005-06		
Ability to form effective relationships Table 18	Direct Services	Children demonstrate improved social/emotional skills in school and at home.	ACDSS- Bright Stars	90% (80 children)	100% (96 children)	No Data for this Indicator	
		CCS -4 year olds	86% (124) of preschool children progressed one developmental step in Social Relationships.	86% (119) of preschool children progressed one developmental step in Social Relationships.	97% (125) of preschool children progressed one developmental step in Social Relationships.		
		MACAA -- Head Start	No Data for this Indicator	No Data for this Indicator	No Data for this Indicator		
		___% of children who understand and express feeling appropriately.	ACDSS- Bright Stars	100% (80)	100% (96)	100% (96)	
		CCS -4 year olds	Raw data available	Raw data available	Raw data available		
		MACAA -- Head Start	No Data for this Indicator	No Data for this Indicator	No Data for this Indicator		
		___% of children who participate in a structured program of social-emotional development.	ACDSS- Bright Stars	100% (80)	100% (96)	100%	
		CCS -4 year olds	89%(139)	89%(139)	89%(139)		
		MACAA -- Head Start	100% (235)	100% (234)	100% (230)		
		86.7 % of children in foster care will have no more than 2 placements during the first 12 months.	ACDSS -- Foster Care	83.5% (111)	83.5% (94)	76.8% (96)	
		CDSS -- Foster Care	65.45% (36)	78% (39)	75.47% (40)		
		RELEVANT NATIONAL, STATE, & LOCAL DATA					
		STATISTIC	NATIONAL	VIRGINIA	C'VILLE	ALBEMARLE	
OTHER RELEVANT INFORMATION							

Partnership Outcomes		Agency Indicators that Support Partnership Outcome	Agency's Program	Agency Results		
PROVIDED BASIC LIVING NEEDS				2003-04	2004-05	2005-06
Safe, affordable, and stable housing Table 19	Direct	100% (8) resident families secure housing.	MACAA -- Hope House	75% (6)	88% (7)	75% (6)
	Support	Families with need for information about or referral for housing.	Arc of the Piedmont -- Infant Development Project	5% (3)	19% (12)	38% (14)
RELEVANT NATIONAL, STATE, & LOCAL DATA						
STATISTIC	NATIONAL		VIRGINIA	C'VILLE	ALBEMARLE	
The number of hours per week an individual would need to work to afford a 0,1,2 bedroom space.	The National Housing wage for a 2 bedroom unit is \$15.37 and the National median hourly wage is only \$14.00.		0 bdrm -76 hrs -\$5.15/hr 1 bdrm -88 hrs -\$5.15/hr 2 bdrm-104 hrs-\$5.15/hr 0 bdrm -40 hrs -\$9.83/hr 1 bdrm-40 hrs-\$11.34/hr 2 bdrm-40 hrs-\$13.41/hr	0 bdrm -67 hours - \$5.15/hr 1 bdrm -79 hours - \$5.15/hr 2 bdrm -101 hours - \$5.15/hr 0 bdrm -40 hours - \$8.62/hr 1 bdrm -40 hours - \$10.19/hr 2 bdrm -40 hours - \$13.02/hr		
OTHER RELEVANT INFORMATION						
Partnership Outcomes		Agency Indicators that Support Partnership Outcome	Agency's Program	Agency Results		
PROVIDED BASIC LIVING NEEDS				2003-04	2004-05	
Regular and appropriate meals Table 20	Support Services	80%of enrolled children will be enrolled in WIC.	CHIP	88% (480)	89% (469)	88% (427)
		Applications from families requesting Food Stamps are processed correctly; and in a timely fashion.	ACDSS -- Family & Children's Benefits	98% (1595) (includes all Food Stamp applications processed; F&C numbers were not captured separately)	98.7% (1393) (includes all Food Stamp applications processed; F&C numbers were not captured separately)	99.5% (1433)
			CDSS -- Food Stamps	99.4% (2052) (includes all applications processed; F&C numbers not captured separately)	99.3% (1838)	98.38% (1628)
RELEVANT NATIONAL, STATE, & LOCAL DATA						
STATISTIC	NATIONAL		VIRGINIA	C'VILLE	ALBEMARLE	
OTHER RELEVANT INFORMATION						

Partnership Outcomes	Agency Indicators that Support Partnership Outcome	Agency's Program	Agency Results		
PROVIDED BASIC LIVING NEEDS			2003-04	2004-05	2005-06
Sufficient family income to meet child and family needs	90% of VIEW participants will attain employment.	ACDSS -VIEW	82% (77)	73% (85)	79% (101)
		CDSS -- VIEW	73% (310)	72% (289)	80% (272)
	85 % of employed VIEW participants will remain employed 3 months after initial employment.	ACDSS -VIEW	71% (55)	84% (71)	79% (80)
		CDSS -- VIEW	74% (229)	77% (223)	69% (187)
	Every teen and/or Medicaid-eligible mom 30 years and under will receive an assessment home visit within 6 wks after delivery. Referrals for support services made.	Health Department -- Great Beginnings	40% (68) of referrals received a home visit & assessment; 36 referrals made (11 WIC, 7 Child Care, 7 Car seat, 11 other)	49% (113) of those referred received a complete assessment. 70% (79) of those who agreed to a visit had an assessment. REFERRALS: 5 -HF/FP, 7 -CHIP, 1 -WIC, 8 -child care assistance, 3 -DSS, 3-Car Seat 3-GED classes, 1- Salvation Army, 1- Food Bank, 1- Social Security, 1- Teen Sight, 1- MACAA, 1- Legal Aid, 1- Thrift shop, and 1- Family Planning.	The Home Visiting Collaborative agreed in the fall of 05 to discontinue the program due to funding shortages. Data from July - September: 20 referrals were received. Of those 40% (8) received a home visit and a complete assessment.
Parents maintain and improve their employment.	United Way Success By 6 -- Child Care Scholarship	94% (197) parents remained employed; 19% (40) parents received pay increases.	97% (216) parents remained employed; 23% (53) parents received pay increases.	95% (153) parents remained employed; 20% (33) parents received pay increases.	
RELEVANT NATIONAL, STATE, & LOCAL DATA					
STATISTIC	NATIONAL	VIRGINIA	C'VILLE	ALBEMARLE	
OTHER RELEVANT INFORMATION					

Partnership Outcomes	Agency Indicators that Support Partnership Outcome	Agency's Program	Agency Results			
PROVIDED BASIC LIVING NEEDS			2003-04	2004-05	2005-06	
Culturally relevant and appropriate services Table 22	Direct Service	Partner Agencies that provide program materials in other languages.	All Partner Agencies	<i>New indicator~05-06</i>	<i>New indicator~05-06</i>	100% (14)
		Partner Agencies that report these materials adequately meet the needs of their clients.	All Partner Agencies	<i>New indicator~05-06</i>	<i>New indicator~05-06</i>	29% (4)
		Partner Agencies that require staff training in cultural diversity.	All Partner Agencies	<i>New indicator~05-06</i>	<i>New indicator~05-06</i>	71% (10)
		Partner Agencies that have interpreter services available to LEP clients.	All Partner Agencies	<i>New indicator~05-06</i>	<i>New indicator~05-06</i>	93% (13)
		Partner Agencies that hold events targeted to LEP clients.	All Partner Agencies	<i>New indicator~05-06</i>	<i>New indicator~05-06</i>	50% (7)
		Partner Agency programs that are accessible to individuals with cognitive, sensory <u>and</u> physical disabilities	All Partner Agencies	<i>New indicator~05-06</i>	<i>New indicator~05-06</i>	79% (10)
RELEVANT NATIONAL, STATE, & LOCAL DATA						
STATISTIC	NATIONAL	VIRGINIA	C'VILLE	ALBEMARLE		
% LEP speakers						
% need support for activities of daily living.						
% of children with disabilities.						
% of population with disabilities.						
OTHER RELEVANT INFORMATION						
 In 2001-02, 15% of prekindergarten children in public elementary schools were limited English proficient. (Nat'l Center for Education Statistics)						



PARTNER AGENCIES

Albemarle County Department of Social Services (ACDSS)



Albemarle County Public Schools (ACPS)

The Arc of the Piedmont (ARC)

C/A Commission on Children & Families (CCF)

Charlottesville City Schools (CCS)

Charlottesville Department of Social Services (CDSS)



Charlottesville Redevelopment & Housing Authority (CRHA)

Children, Youth & Family Services, Inc. (CYFS)

FOCUS Women's Resource Center (FOCUS)

Jefferson Area CHIP (CHIP)

Monticello Area Community Action Agency (MACAA)

Region Ten Community Services Board (REGION)

Thomas Jefferson Health District (TJHD)



United Way - Success By 6 (UNITED)

Virginia Cooperative Extension (VA COOP)





If you have any questions please contact:

Lisa Godwin ~ Coordinator
116 West Jefferson St.
Charlottesville, VA 22902
Phone (434) 220-KIDS
Fax (434) 295-2638
lgodwin@cyfs.org

