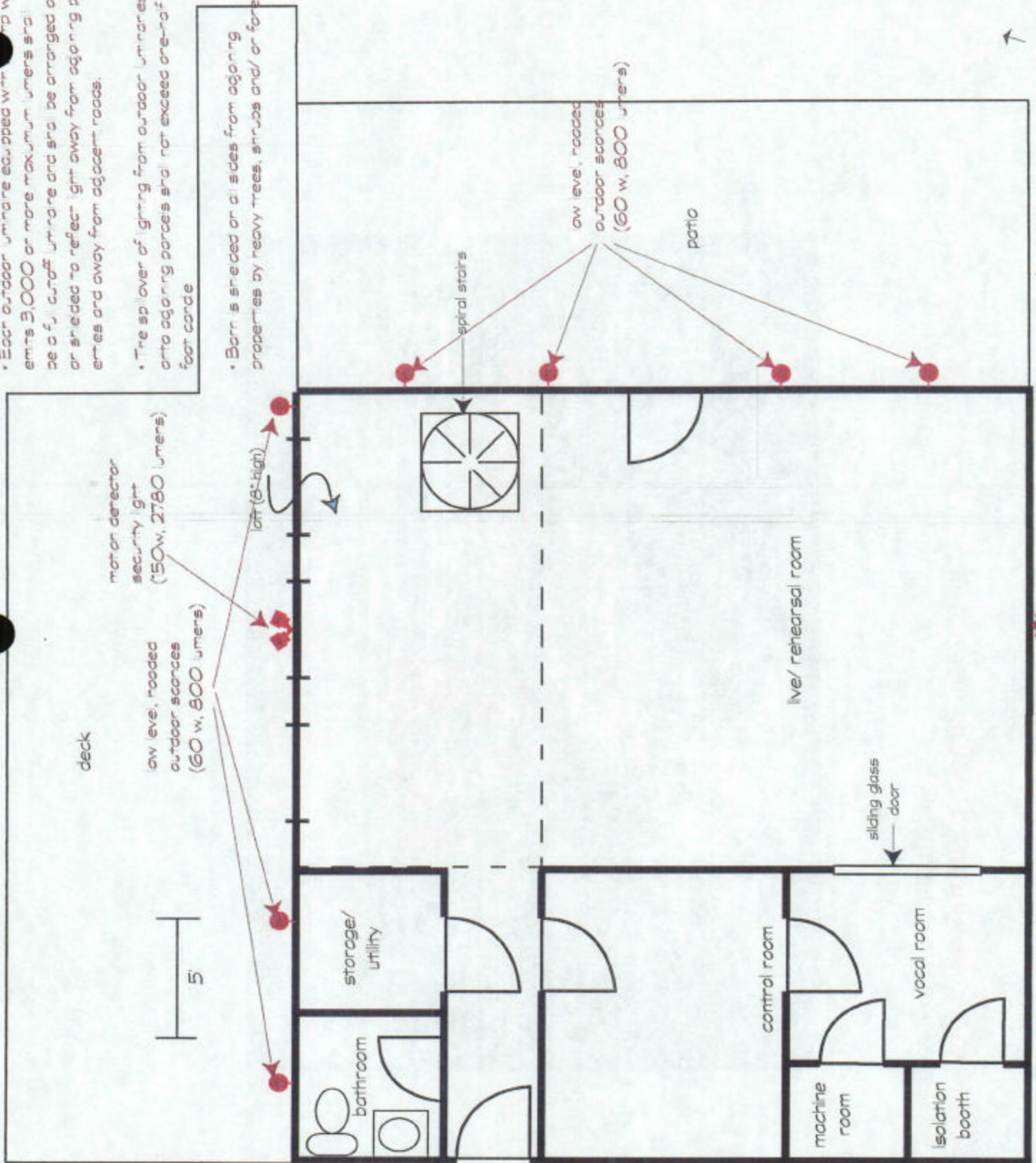


• Each outdoor luminaire equipped with a lens which emits 3,000 or more maximum lumens shall be a full cutoff luminaire and shall be arranged or shielded to reflect light away from adjoining properties and away from adjacent roads.

• The spillover of lighting from outdoor luminaires onto adjoining parcels shall not exceed one-half foot candle

• Barns shielded on all sides from adjoining properties by heavy trees, shrubs and/or forest



singleton studios- floor plan detailing outdoor lighting

motion detector security light (150w, 2780 lumens)

motion detector security light (150w, 2780 lumens)

P A R K I N G A R E A