



*Thomas
Jefferson*

Planning District Commission

Regional planning linking transportation, land use, economy & environment

City of Charlottesville

Craig Barton
Kevin Lynch, Vice-Chair

Albemarle County

Sally H. Thomas
David Wyant

Fluvanna County

Norma Hutner
Grant Tate

Greene County

Jeri Allen, Chair
Philip Anns

Louisa County

David B. Morgan, M.D.
Eric Purcell


Nelson County

Fred Boger
Connie Brennan

Executive Director

Harrison B. Rue

MEMORANDUM

TO: Albemarle Board of Supervisors
FROM:  Rhonda Edmunds, Transportation Program Manger
DATE: March 25, 2004
RE: Regional Transportation Overview

In preparation for your upcoming meeting, enclosed are a few handouts which you should find useful in understanding the complex regional transportation planning process. These documents may not be completely accurate, realizing that localities have made internal changes to increase efficiency. (For example, the County's recent merger of the Community Planning & Development and Engineering departments).

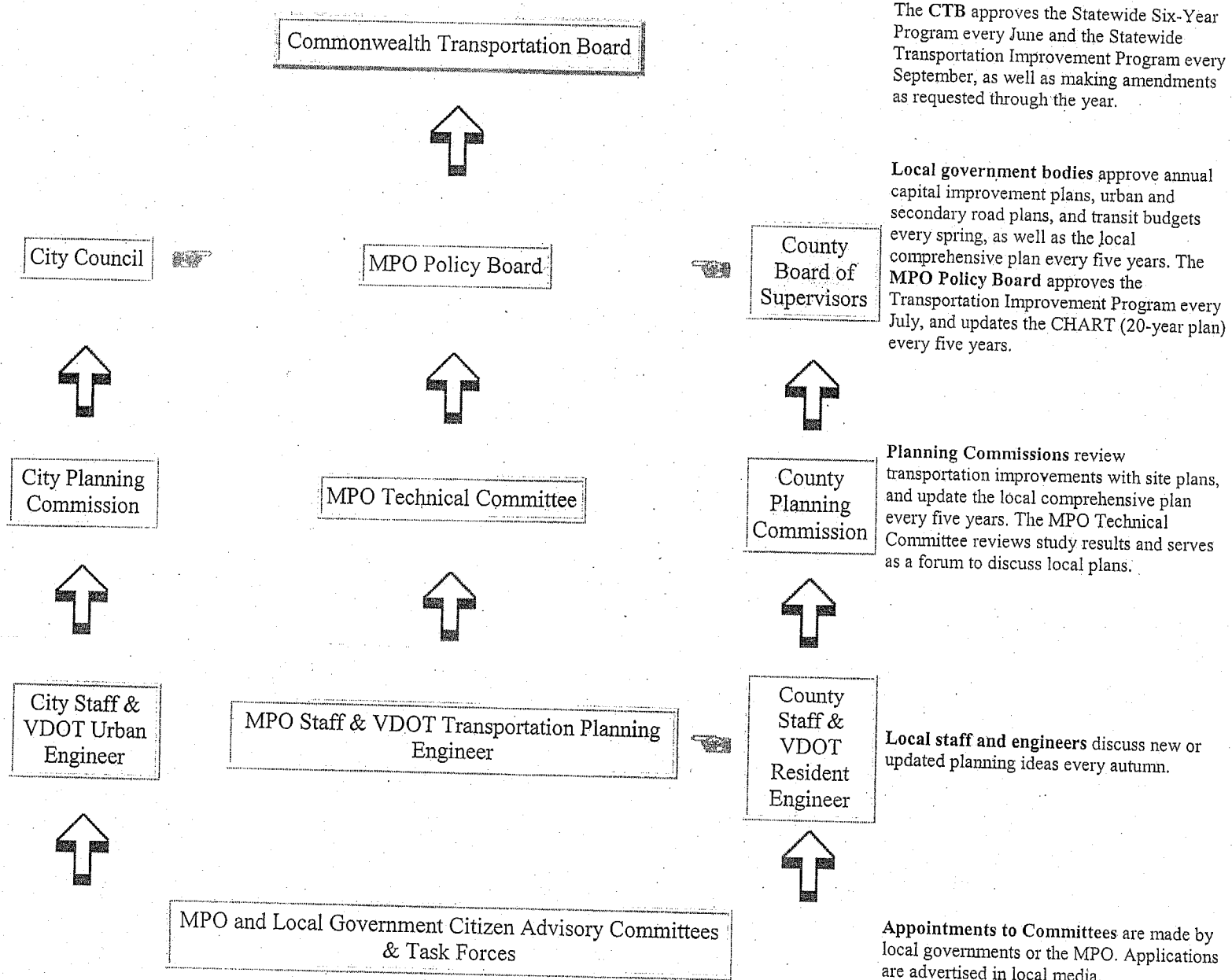
In addition to touching on the enclosed, Harrison Rue and I will speak on specific plans and studies and how they relate to the overall goals. If you have any questions prior to then or would like to ensure specific details are included, please forward any requests via your clerk's office. We would also welcome any individual meetings to discuss these details further.

25-03-04P10:37 RCVD

THE TRANSPORTATION PLANNING PROCESS:

Staff, Committees and Boards Who Develop and Approve Plans

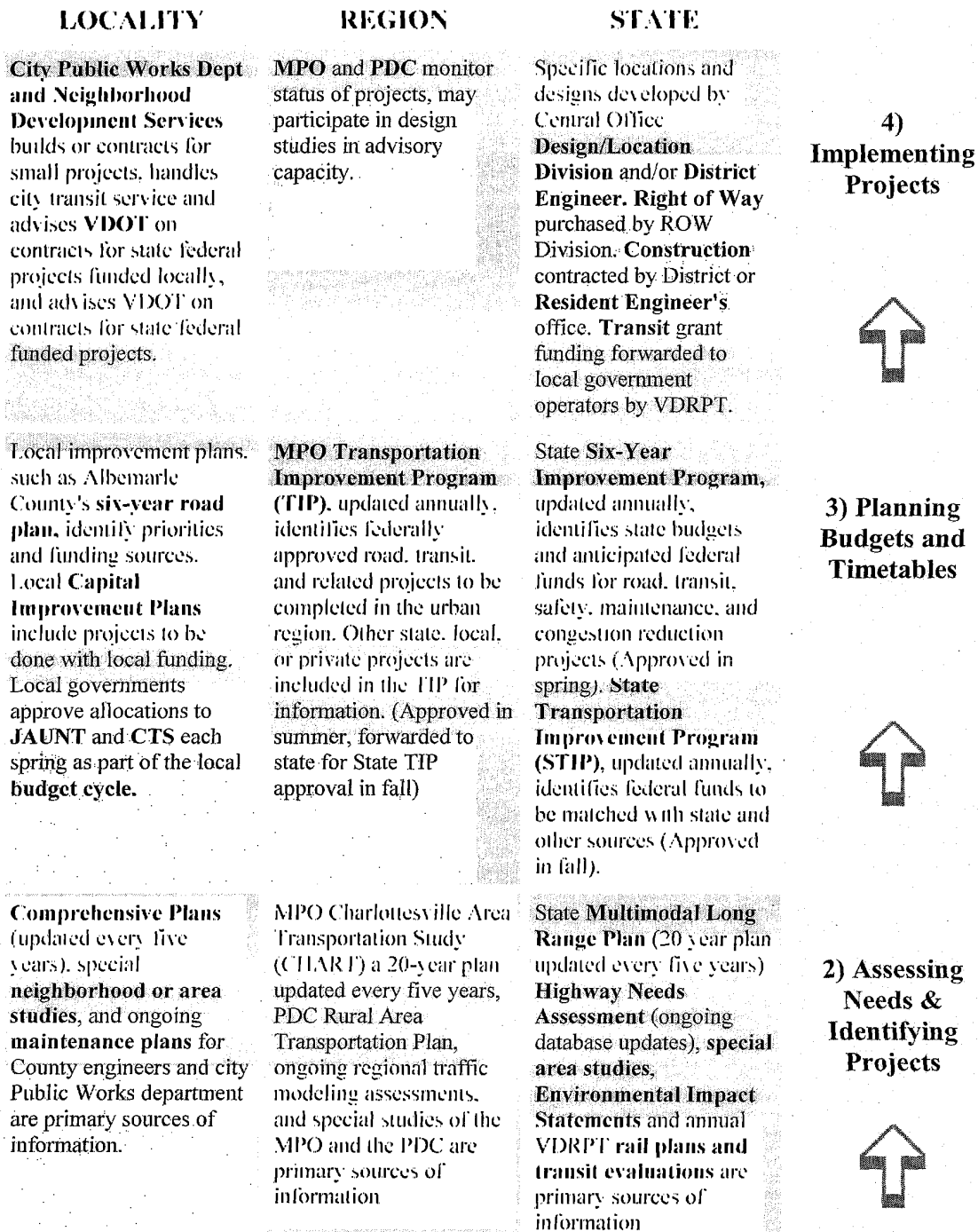
Adapted from a graphic prepared by the Thomas Jefferson Planning District Commission, 12/95



THE TRANSPORTATION PLANNING PROCESS:

How Projects are Proposed, Planned and Implemented

Adapted from a graphic prepared by the Thomas Jefferson Planning District Commission, 12/95



Public comment is sought prior to the approval of annual budgets, including Capital Improvement Plans, and throughout the process of updating Comprehensive Plans. Members of the public may speak at any local council or board meetings, and to individual elected officials or planning commissioners. Citizens are also regularly appointed to serve on local planning boards and committees.

Public comment is sought every year for the Annual update of the TIP, and throughout the process of developing the CHART update. Public hearings are held each spring prior to approval of the MPO **annual work program** and regarding completion of **major MPO or PDC studies. Members of the public may speak at any MPO or PDC meetings, and to any individual MPO or PDC member.**

Public comment is solicited every spring at the District and Central offices for the annual update of the state six year program, and for each stage of major plans, environmental impact studies, and design and location studies. Members of the public may talk with their Commonwealth Transportation Board representatives at any time.

1) Public Input

Local Government Transportation Planning

City of Charlottesville

The **Traffic Engineer** in the office of **Neighborhood Development Services** works with the **VDOT Urban Engineer** and the **Public Works Department** to develop plans for roads, sidewalks and bicycle facilities in the city. Projects are funded through the **City Capital Improvements Plan**, the **Public Works budget**, and the **VDOT Urban Road** program, and are updated through the City Budget approval process each spring. The **City Comprehensive Plan**, updated by the Planning Commission and City Council every five years, identifies priority transportation improvements to be undertaken during the upcoming 20-year period. City projects and goals which have regional impacts are also included in the MPO Transportation Improvement Program.

Albemarle County

The **Albemarle Transportation Planner** in the office of **Planning and Community Development** works with the **VDOT Resident Engineer** to identify primary and secondary road needs. Road improvements are funded by **VDOT and federal sources**, with some County funding (mostly dedicated to minor road improvements) through the **Capital Improvement Plan**. The County uses a criteria-based rating system to set priorities for the timing and funding of road improvements, and fully updates its six-year road plans every other year, with minor changes in the off years. County road projects slated for federal funds or with regional impact are included in the MPO Transportation Improvement Program.

Fluvanna, Greene, Louisa, and Nelson Counties

The **County Administrator and County Planner** work with the **VDOT Resident Engineer** to identify and develop primary and secondary road projects for the VDOT Six Year Improvement Program and the local **Capital Improvement Plan**. Some localities have citizen task forces which assist in developing transportation plans. Each locality updates its **Comprehensive Plan** every five years, working through the **Planning Commission and Board of Supervisors**.

Transit Services (Charlottesville Transit, University Transit, and JAUNT)

CTS, a division of the Charlottesville Public Works Department, conducts transit planning for the City of Charlottesville, and urban Albemarle County routes, which depend upon approval and funding from the County. County route proposals are based on recommendations from CTS, County Planning and Community Development staff, and the general public.

JAUNT, the demand-response public transit service for urban people with disabilities and all rural residents, is a public service corporation owned by Charlottesville, Albemarle, Fluvanna, Louisa, and Nelson Counties. Its plan and budget are developed by an appointed Board of Directors each year and approved by each local government for funding. CTS and JAUNT contract with private taxi services for night and weekend transportation of people with disabilities.